

For Research Use Only

CFHR3 Polyclonal antibody

Catalog Number: 16583-1-AP **5 Publications**



Basic Information

Catalog Number:

16583-1-AP

Size:

150UL, Concentration: 500 µg/ml by Nanodrop and 280 µg/ml by Bradford method using BSA as the standard;

Source:

Rabbit

Isotype:

IgG

Immunogen Catalog Number:

AG9963

GenBank Accession Number:

BC058009

GeneID (NCBI):

10878

Full Name:

complement factor H-related 3

Calculated MW:

330 aa, 37 kDa

Observed MW:

45-56 kDa

Purification Method:

Antigen affinity purification

Recommended Dilutions:

WB 1:500-1:3000

IP 0.5-4.0 µg for IP and 1:200-1:1000 for WB

IHC 1:50-1:500

Applications

Tested Applications:

IHC, IP, WB, ELISA

Cited Applications:

IF, WB

Species Specificity:

human

Cited Species:

human

Note-IHC: suggested antigen retrieval with TE buffer pH 9.0; (*) Alternatively, antigen retrieval may be performed with citrate buffer pH 6.0

Positive Controls:

WB: human heart tissue,

IP: HepG2 cells,

IHC: human liver tissue,

Background Information

CFHR3, also named as DOWN16, belongs to the complement factor H-related protein family. Expressed by the liver and secreted in plasma, human CFHR3 is composed of five short consensus repeats (SCRs), and it also has a 19-amino acid signal peptide and four N-linked glycosylation sites. It may be involved in complement regulation. A frequent deletion of CFHR1 and CFHR3 genes was found to be associated with decrease risk of aged-related macular degeneration (AMD), and with an increased risk of atypical hemolytic-uremic syndrome (aHUS).

Notable Publications

Author	Pubmed ID	Journal	Application
Yoko Yoshida	25951460	PLoS One	WB
Swati Arya	29580721	Exp Eye Res	IF
Hong Liu	31524260	Mol Med Rep	WB

Storage

Storage:

Store at -20°C. Stable for one year after shipment.

Storage Buffer:

PBS with 0.02% sodium azide and 50% glycerol pH 7.3.

Aliquoting is unnecessary for -20°C storage

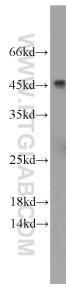
For technical support and original validation data for this product please contact:

T: 1 (888) 4PTGLAB (1-888-478-4522) (toll free in USA), or 1(312) 455-8498 (outside USA)

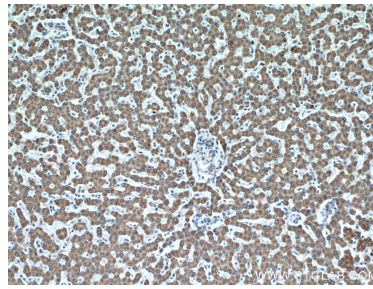
E: proteintech@ptglab.com
W: ptglab.com

This product is exclusively available under Proteintech Group brand and is not available to purchase from any other manufacturer.

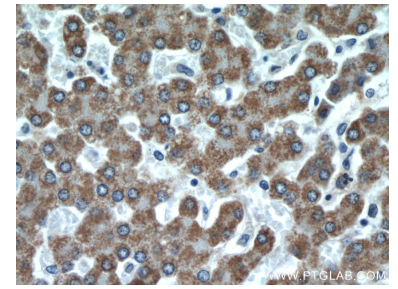
Selected Validation Data



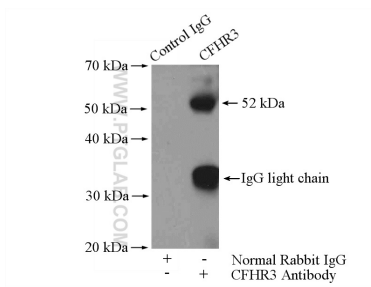
human heart tissue were subjected to SDS PAGE followed by western blot with 16583-1-AP (CFHR3 antibody) at dilution of 1:2000 incubated at room temperature for 1.5 hours.



Immunohistochemical analysis of paraffin-embedded human liver using 16583-1-AP (CFHR3 antibody) at dilution of 1:50 (under 10x lens).



Immunohistochemical analysis of paraffin-embedded human liver using 16583-1-AP (CFHR3 antibody) at dilution of 1:50 (under 40x lens).



IP Result of anti-CFHR3 (IP:16583-1-AP, 4ug; Detection:16583-1-AP 1:300) with HepG2 cells lysate 2400ug.