

For Research Use Only

IMPA1 Polyclonal antibody

Catalog Number: 16593-1-AP



Basic Information

Catalog Number: 16593-1-AP	GenBank Accession Number: BC008381	Purification Method: Antigen affinity purification
Size: 150UL, Concentration: 400 µg/ml by Nanodrop and 207 µg/ml by Bradford method using BSA as the standard;	GeneID (NCBI): 3612	Recommended Dilutions: WB 1:500-1:2000 IHC 1:20-1:200 IF 1:10-1:100
Source: Rabbit	Full Name: inositol(myo)-1(or 4)-monophosphatase 1	
Isotype: IgG	Calculated MW: 277 aa, 30 kDa	
Immunogen Catalog Number: AG9632	Observed MW: 30 kDa	

Applications

Tested Applications: IF, IHC, WB, ELISA	Positive Controls: WB: human kidney tissue, human brain tissue IHC: human brain tissue, IF: HepG2 cells,
Species Specificity: human, mouse, rat	
Note-IHC: suggested antigen retrieval with TE buffer pH 9.0; (*) Alternatively, antigen retrieval may be performed with citrate buffer pH 6.0	

Background Information

Storage

Storage:
Store at -20°C. Stable for one year after shipment.
Storage Buffer:
PBS with 0.02% sodium azide and 50% glycerol pH 7.3.
Aliquoting is unnecessary for -20°C storage

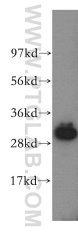
For technical support and original validation data for this product please contact:

T: 1 (888) 4PTGLAB (1-888-478-4522) (toll free in USA), or 1(312) 455-8498 (outside USA)

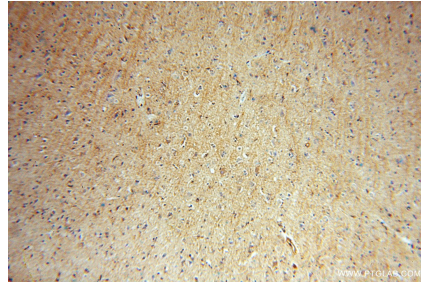
E: proteintech@ptglab.com
W: ptglab.com

This product is exclusively available under Proteintech Group brand and is not available to purchase from any other manufacturer.

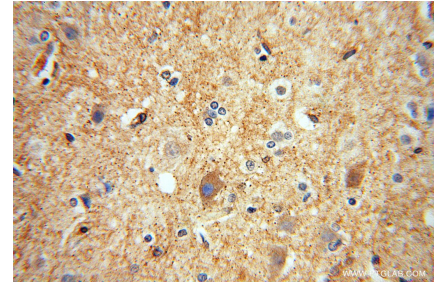
Selected Validation Data



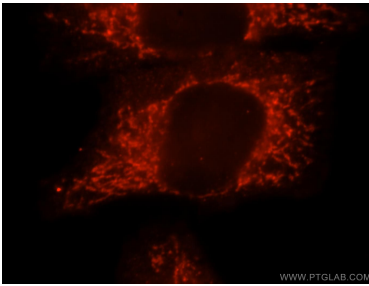
human kidney tissue were subjected to SDS PAGE followed by western blot with 16593-1-AP (IMPA1 antibody) at dilution of 1:300 incubated at room temperature for 1.5 hours.



Immunohistochemical analysis of paraffin-embedded human brain using 16593-1-AP (IMPA1 antibody) at dilution of 1:50 (under 10x lens).



Immunohistochemical analysis of paraffin-embedded human brain using 16593-1-AP (IMPA1 antibody) at dilution of 1:50 (under 40x lens).



Immunofluorescent analysis of HepG2 cells, using IMPA1 antibody 16593-1-AP at 1:25 dilution and Rhodamine-labeled goat anti-rabbit IgG (red).