

For Research Use Only

# MRPL46 Polyclonal antibody

Catalog Number: 16611-1-AP

4 Publications



## Basic Information

### Catalog Number:

16611-1-AP

### Size:

150ul, Concentration: 600 ug/ml by Nanodrop and 267 ug/ml by Bradford method using BSA as the standard;

### Source:

Rabbit

### Isotype:

IgG

### Immunogen Catalog Number:

AG9837

### GenBank Accession Number:

BC017883

### GeneID (NCBI):

26589

### UNIPROT ID:

Q9H2W6

### Full Name:

mitochondrial ribosomal protein L46

### Calculated MW:

279 aa, 32 kDa

### Observed MW:

32 kDa

### Purification Method:

Antigen affinity purification

### Recommended Dilutions:

WB: 1:1000-1:6000

IHC: 1:20-1:200

IF/ICC: 1:50-1:500

## Applications

### Tested Applications:

WB, IHC, IF/ICC, ELISA

### Cited Applications:

WB, IF

### Species Specificity:

human, mouse, rat

### Cited Species:

human

**Note-IHC: suggested antigen retrieval with TE buffer pH 9.0; (\*) Alternatively, antigen retrieval may be performed with citrate buffer pH 6.0**

### Positive Controls:

WB : A549 cells, HeLa cells, mouse brain tissue, mouse heart tissue

IHC : human heart tissue, human kidney tissue

IF/ICC : HepG2 cells,

## Notable Publications

Author	Pubmed ID	Journal	Application
Ying Shu	36314841	EMBO J	WB
Elena Lavdovskaia	38992089	Nat Struct Mol Biol	WB
Taru Hilander	39015150	iScience	WB,IF

## Storage

### Storage:

Store at -20°C. Stable for one year after shipment.

### Storage Buffer:

PBS with 0.02% sodium azide and 50% glycerol, pH7.3

Aliquoting is unnecessary for -20°C storage

\*\*\* 20ul sizes contain 0.1% BSA

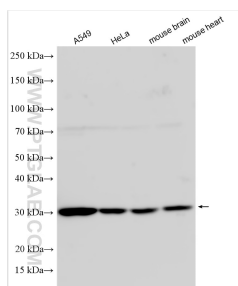
For technical support and original validation data for this product please contact:

T: 1 (888) 4PTGLAB (1-888-478-4522) (toll free in USA), or 1(312) 455-8498 (outside USA)

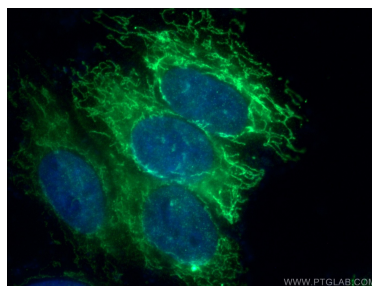
E: [proteintech@ptglab.com](mailto:proteintech@ptglab.com)  
W: [ptglab.com](http://ptglab.com)

This product is exclusively available under Proteintech Group brand and is not available to purchase from any other manufacturer.

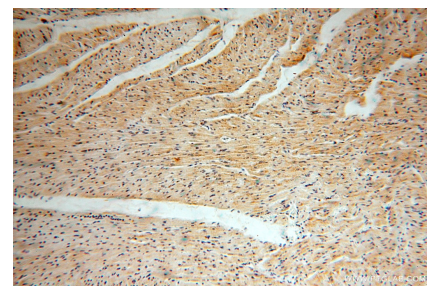
## Selected Validation Data



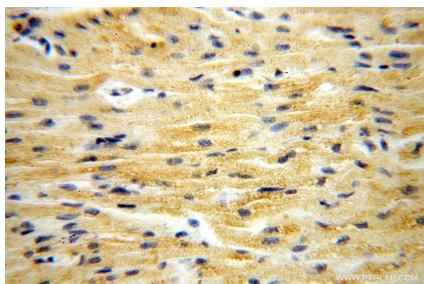
Various lysates were subjected to SDS PAGE followed by western blot with 16611-1-AP (MRPL46 antibody) at dilution of 1:3000 incubated at room temperature for 1.5 hours.



Immunofluorescent analysis of (4% PFA) fixed HepG2 cells using 16611-1-AP (MRPL46 antibody) at dilution of 1:50 and Alexa Fluor 488-conjugated Goat Anti-Rabbit IgG(H+L).



Immunohistochemical analysis of paraffin-embedded human heart using 16611-1-AP (MRPL46 antibody) at dilution of 1:50 (under 10x lens).



Immunohistochemical analysis of paraffin-embedded human heart using 16611-1-AP (MRPL46 antibody) at dilution of 1:50 (under 40x lens).