

For Research Use Only

BCL2L13 Polyclonal antibody

Catalog Number: 16612-1-AP

Featured Product

26 Publications



Basic Information

Catalog Number:

16612-1-AP

Size:

150ul, Concentration: 750 ug/ml by Nanodrop;

Source:

Rabbit

Isotype:

IgG

Immunogen Catalog Number:

AG9841

GenBank Accession Number:

BC003032

GeneID (NCBI):

23786

UNIPROT ID:

Q9BXK5

Full Name:

BCL2-like 13 (apoptosis facilitator)

Calculated MW:

485 aa, 53 kDa

Observed MW:

85 kDa

Purification Method:

Antigen affinity purification

Recommended Dilutions:

WB: 1:1000-1:6000

IP: 0.5-4.0 ug for 1.0-3.0 mg of total protein lysate

IHC: 1:50-1:500

Applications

Tested Applications:

WB, IP, IHC, ELISA

Cited Applications:

WB, IHC, IF

Species Specificity:

human, mouse, rat

Cited Species:

human, mouse, rat

Positive Controls:

WB: HeLa cells, mouse heart tissue, HepG2 cells, rat heart tissue

IP: mouse heart tissue,

IHC: human pancreas cancer tissue,

Note-IHC: suggested antigen retrieval with *TE buffer pH 9.0*; (*) Alternatively, antigen retrieval may be performed with *citrate buffer pH 6.0*

Background Information

BCL2L13/MIL1 gene encodes a mitochondrially-localized protein with conserved B-cell lymphoma 2 homology motifs. BCL2L13 gene is highest expressed in heart, placenta and pancreas. The encoded protein Bcl-rambo may promote the activation of caspase-3 and apoptosis. The Bcl-rambo cell death activity was induced by its membrane-anchored C-terminal domain and not by the Bcl-2 homology region (PMID: 11262395). Multivariate analysis demonstrated that high expression of BCL2L13 was an independent prognostic factor for in childhood acute lymphoblastic leukemia (PMID: 20109966).

Notable Publications

Author	Pubmed ID	Journal	Application
Qiong Fang	36094724	Metab Brain Dis	IHC
Liping Ju	30352689	Biochem Biophys Res Commun	WB
Simone C da Silva Rosa	33044904	Autophagy	WB

Storage

Storage:

Store at -20°C. Stable for one year after shipment.

Storage Buffer:

PBS with 0.02% sodium azide and 50% glycerol, pH7.3

Aliquoting is unnecessary for -20°C storage

***** 20ul sizes contain 0.1%BSA**

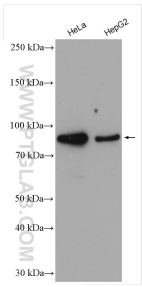
For technical support and original validation data for this product please contact:

T: 1 (888) 4PTGLAB (1-888-478-4522) (toll free in USA), or 1(312) 455-8498 (outside USA)

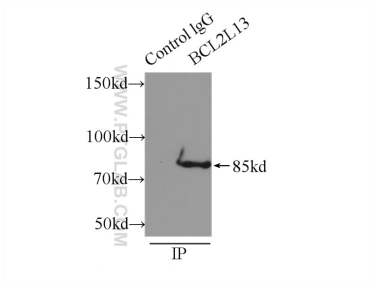
E: proteintech@ptglab.com
W: ptglab.com

This product is exclusively available under Proteintech Group brand and is not available to purchase from any other manufacturer.

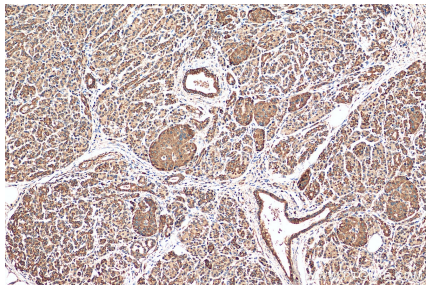
Selected Validation Data



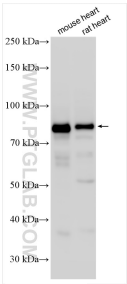
Various lysates were subjected to SDS PAGE followed by western blot with 16612-1-AP (BCL2L13 antibody) at dilution of 1:3000 incubated at room temperature for 1.5 hours.



IP result of anti-BCL2L13 (IP:16612-1-AP, 3ug; Detection:16612-1-AP 1:100) with mouse heart tissue lysate 8000ug.



Immunohistochemical analysis of paraffin-embedded human pancreas cancer tissue slide using 16612-1-AP (BCL2L13 antibody) at dilution of 1:200 (under 10x lens). Heat mediated antigen retrieval with Tris-EDTA buffer (pH 9.0).



Various lysates were subjected to SDS PAGE followed by western blot with 16612-1-AP (BCL2L13 antibody) at dilution of 1:3000 incubated at room temperature for 1.5 hours.