

For Research Use Only

AMZ2 Polyclonal antibody

Catalog Number: 16664-1-AP



Basic Information

Catalog Number:

16664-1-AP

Size:

150ul, Concentration: 133 ug/ml by Nanodrop and 133 ug/ml by Bradford method using BSA as the standard;

Source:

Rabbit

Isotype:

IgG

Immunogen Catalog Number:

AG10141

GenBank Accession Number:

BC056271

GeneID (NCBI):

51321

UNIPROT ID:

Q86W34

Full Name:

archaelysin family metallopeptidase 2

Calculated MW:

360 aa, 41 kDa

Observed MW:

41 kDa

Purification Method:

Antigen affinity purification

Recommended Dilutions:

WB: 1:500-1:2000

IHC: 1:50-1:500

IF/ICC: 1:50-1:500

FC (Intra): 0.40 ug per 10⁶ cells in a 100 µl suspension

Applications

Tested Applications:

WB, IHC, IF/ICC, ELISA

Species Specificity:

human, mouse, rat

Note-IHC: suggested antigen retrieval with TE buffer pH 9.0; (*) Alternatively, antigen retrieval may be performed with citrate buffer pH 6.0

Positive Controls:

WB: HepG2 cells, human brain tissue

IHC: human liver tissue, human heart tissue, human placenta tissue, human testis tissue, human skin tissue, human brain tissue, human spleen tissue, human ovary tissue

IF/ICC: HepG2 cells,

FC (Intra): HepG2 cells,

Background Information

AMZ2 (archaelysin family metallopeptidase 2) is a zinc metalloprotease. Its calculated molecular weight and observed molecular weight are both 41 kDa.

Storage

Storage:

Store at -20°C. Stable for one year after shipment.

Storage Buffer:

PBS with 0.02% sodium azide and 50% glycerol, pH7.3

Aliquoting is unnecessary for -20°C storage

*** 20ul sizes contain 0.1% BSA

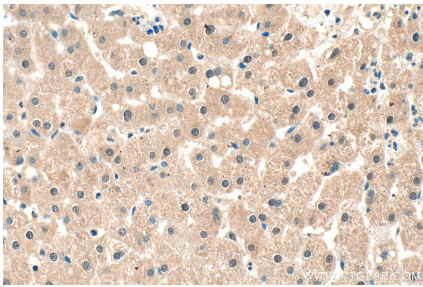
For technical support and original validation data for this product please contact:

T: 1 (888) 4PTGLAB (1-888-478-4522) (toll free in USA), or 1(312) 455-8498 (outside USA)

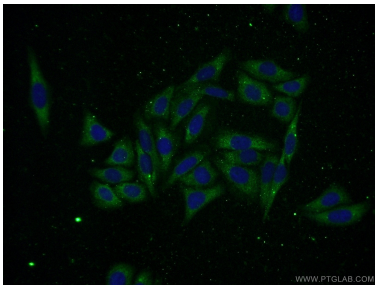
E: proteintech@ptglab.com
W: ptglab.com

This product is exclusively available under Proteintech Group brand and is not available to purchase from any other manufacturer.

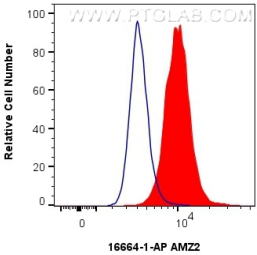
Selected Validation Data



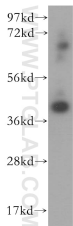
Immunohistochemical analysis of paraffin-embedded human liver tissue slide using 16664-1-AP (AMZ2 antibody) at dilution of 1:100 (under 40x lens). Heat mediated antigen retrieval with Tris-EDTA buffer (pH 9.0).



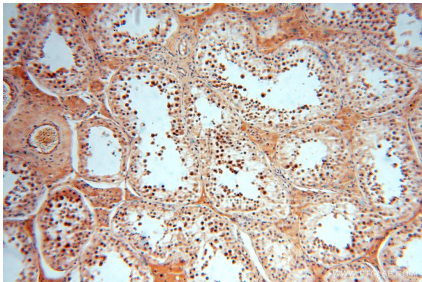
Immunofluorescent analysis of (-20°C Ethanol) fixed HepG2 cells using 16664-1-AP (AMZ2 antibody) at dilution of 1:50 and Alexa Fluor 488-conjugated AffiniPure Goat Anti-Rabbit IgG(H+L).



1x10⁶ HepG2 cells were intracellularly stained with 0.4 ug AMZ2 Polyclonal antibody (16664-1-AP) and CoraLite®488-Conjugated Goat Anti-Rabbit IgG(H+L) (SA00013-2)(red), or 0.4 ug Rabbit IgG control Rabbit PolyAb (30000-0-AP) (blue). Cells were fixed with 4% PFA and permeabilized with Flow Cytometry Perm Buffer (PF00011-C).



HepG2 cells were subjected to SDS PAGE followed by western blot with 16664-1-AP (AMZ2 antibody) at dilution of 1:1000 incubated at room temperature for 1.5 hours.



Immunohistochemical analysis of paraffin-embedded human testis using 16664-1-AP (AMZ2 antibody) at dilution of 1:50 (under 10x lens).