

For Research Use Only

# RPS14 Polyclonal antibody

Catalog Number: 16683-1-AP

15 Publications



## Basic Information

### Catalog Number:

16683-1-AP

### Size:

150ul, Concentration: 900 ug/ml by Nanodrop and 467 ug/ml by Bradford method using BSA as the standard;

### Source:

Rabbit

### Isotype:

IgG

### Immunogen Catalog Number:

AG10012

### GenBank Accession Number:

BC006784

### GeneID (NCBI):

6208

### UNIPROT ID:

P62263

### Full Name:

ribosomal protein S14

### Calculated MW:

16 kDa

### Observed MW:

16 kDa

### Purification Method:

Antigen affinity purification

### Recommended Dilutions:

WB: 1:1000-1:4000

IHC: 1:200-1:800

## Applications

### Tested Applications:

WB, IHC, ELISA

### Cited Applications:

WB, IHC, IF

### Species Specificity:

human, mouse, rat

### Cited Species:

human, mouse, rat, zebrafish, arabidopsis

**Note-IHC: suggested antigen retrieval with TE buffer pH 9.0; (\*) Alternatively, antigen retrieval may be performed with citrate buffer pH 6.0**

### Positive Controls:

WB : HeLa cells, mouse liver tissue, HepG2 cells, rat liver tissue

IHC : human liver tissue, human colon

## Background Information

The mammalian ribosome consists of 4 RNA species and approximately 80 different proteins. The ribosomal proteins are encoded by complex gene families that include at least 1 active intron-containing gene and multiple processed pseudogenes [PMID 3785212]. The RPS14 gene, encoding a ribosomal protein that belongs to the 40S ribosome, and mapping to the commonly deleted region (CDR) of the 5q- syndrome, shows haploinsufficiency in the CD34+ cells of patients with this disorder [PMID:22430631].

## Notable Publications

Author	Pubmed ID	Journal	Application
Elizabeth B Rinker	26408650	J Clin Pathol	IHC
Eun-Ryeong Hahm	35419300	J Cancer Prev	WB
Harrison Tudor Evans	34147135	Acta Neuropathol Commun	WB

## Storage

### Storage:

Store at -20°C. Stable for one year after shipment.

### Storage Buffer:

PBS with 0.02% sodium azide and 50% glycerol, pH7.3

Aliquoting is unnecessary for -20°C storage

\*\*\* 20ul sizes contain 0.1% BSA

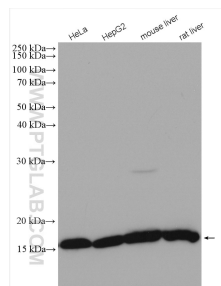
For technical support and original validation data for this product please contact:

T: 1 (888) 4PTGLAB (1-888-478-4522) (toll free in USA), or 1(312) 455-8498 (outside USA)

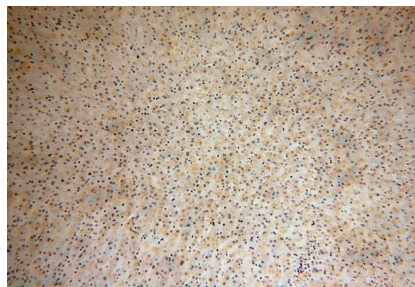
E: [proteintech@ptglab.com](mailto:proteintech@ptglab.com)  
W: [ptglab.com](http://ptglab.com)

This product is exclusively available under Proteintech Group brand and is not available to purchase from any other manufacturer.

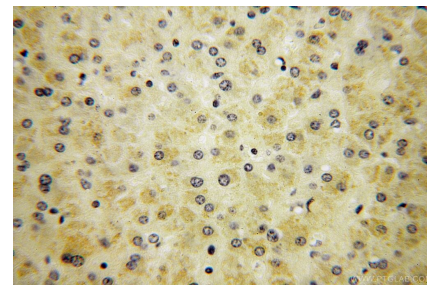
## Selected Validation Data



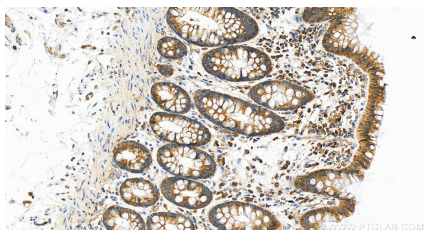
Various lysates were subjected to SDS PAGE followed by western blot with 16683-1-AP (RPS14 antibody) at dilution of 1:2000 incubated at room temperature for 1.5 hours.



Immunohistochemical analysis of paraffin-embedded human liver using 16683-1-AP (RPS14 antibody) at dilution of 1:200 (under 10x lens).



Immunohistochemical analysis of paraffin-embedded human liver using 16683-1-AP (RPS14 antibody) at dilution of 1:200 (under 40x lens).



Immunohistochemical analysis of paraffin-embedded human colon slide using 16683-1-AP (RPS14 antibody) at dilution of 1:400 (under 20x lens). Heat mediated antigen retrieval with Tris-EDTA buffer (pH 9.0).