

For Research Use Only

# CKAP4 Polyclonal antibody

Catalog Number: 16686-1-AP **22 Publications**



## Basic Information

<b>Catalog Number:</b> 16686-1-AP	<b>GenBank Accession Number:</b> BC082972	<b>Purification Method:</b> Antigen affinity purification
<b>Size:</b> 150ul , Concentration: 400 µg/ml by Nanodrop and 233 µg/ml by Bradford method using BSA as the standard;	<b>GeneID (NCBI):</b> 10970	<b>Recommended Dilutions:</b> WB 1:2000-1:16000 IP 0.5-4.0 ug for IP and 1:500-1:2000 for WB
<b>Source:</b> Rabbit	<b>Full Name:</b> cytoskeleton-associated protein 4	<b>IHC 1:50-1:500</b> <b>IF 1:10-1:100</b>
<b>Isotype:</b> IgG	<b>Calculated MW:</b> 602 aa, 66 kDa	
<b>Immunogen Catalog Number:</b> AG10019	<b>Observed MW:</b> 63 kDa	

## Applications

<b>Tested Applications:</b> IF, IHC, IP, WB, ELISA	<b>Positive Controls:</b> WB : HepG2 cells, rat kidney tissue, HeLa cells
<b>Cited Applications:</b> CoIP, IF, IHC, IP, WB	<b>IP :</b> HeLa cells,
<b>Species Specificity:</b> human, mouse, rat	<b>IHC :</b> human kidney tissue, human liver tissue
<b>Cited Species:</b> human, mouse	<b>IF :</b> HepG2 cells,

**Note-IHC: suggested antigen retrieval with TE buffer pH 9.0; (\*) Alternatively, antigen retrieval may be performed with citrate buffer pH 6.0**

## Background Information

CKAP4, also named as Climp-63, is a 63 kDa cytoskeleton-linking membrane protein. It is the partner of triadin. CKAP4 is responsible for this association of triads and microtubules.

## Notable Publications

Author	Pubmed ID	Journal	Application
Gui-Feng Lu	30288057	Onco Targets Ther	WB,IHC
Svenja Zielke	33111629	Autophagy	WB,IF
Yangjie Liao	31748416	J Biol Chem	WB

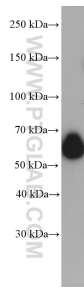
## Storage

**Storage:**  
Store at -20°C. Stable for one year after shipment.  
**Storage Buffer:**  
PBS with 0.02% sodium azide and 50% glycerol pH 7.3.  
Aliquoting is unnecessary for -20°C storage

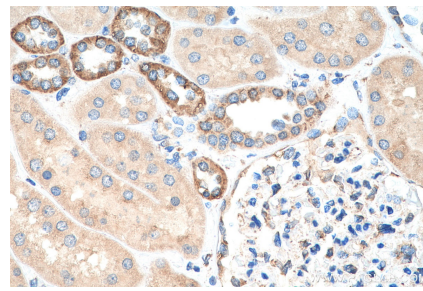
For technical support and original validation data for this product please contact:  
T: 1 (888) 4PTGLAB (1-888-478-4522) (toll free in USA), or 1(312) 455-8498 (outside USA) E: proteintech@ptglab.com W: ptglab.com

**This product is exclusively available under Proteintech Group brand and is not available to purchase from any other manufacturer.**

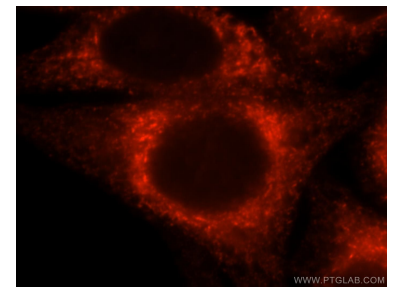
## Selected Validation Data



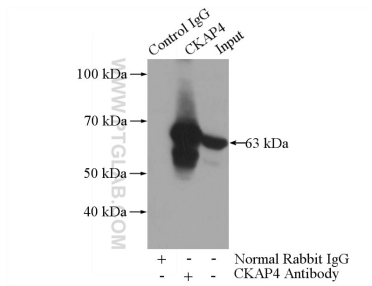
HepG2 cells were subjected to SDS PAGE followed by western blot with 16686-1-AP (CKAP4 antibody) at dilution of 1:8000 incubated at room temperature for 1.5 hours.



Immunohistochemical analysis of paraffin-embedded human kidney tissue slide using 16686-1-AP (CKAP4 antibody) at dilution of 1:200 (under 40x lens). Heat mediated antigen retrieval with Tris-EDTA buffer (pH 9.0).



Immunofluorescent analysis of HepG2 cells, using CKAP4 antibody 16686-1-AP at 1:25 dilution and Rhodamine-labeled goat anti-rabbit IgG (red).



IP Result of anti-CKAP4 (IP:16686-1-AP, 4ug; Detection:16686-1-AP 1:1000) with HeLa cells lysate 2000ug.