

For Research Use Only

# PARP11 Polyclonal antibody

Catalog Number: 16692-1-AP

1 Publications



## Basic Information

Catalog Number:

16692-1-AP

Size:

150ul, Concentration: 450 ug/ml by Nanodrop;

Source:

Rabbit

Isotype:

IgG

Immunogen Catalog Number:

AG10053

GenBank Accession Number:

BC017569

GeneID (NCBI):

57097

UNIPROT ID:

Q9NR21

Full Name:

poly (ADP-ribose) polymerase family, member 11

Calculated MW:

331 aa, 39 kDa

Observed MW:

30 kDa

Purification Method:

Antigen affinity purification

Recommended Dilutions:

WB 1:500-1:2000

IHC 1:50-1:500

## Applications

Tested Applications:

WB, IHC, ELISA

Cited Applications:

WB, IF

Species Specificity:

human, mouse

Cited Species:

human, pig

**Note-IHC: suggested antigen retrieval with TE buffer pH 9.0; (\*) Alternatively, antigen retrieval may be performed with citrate buffer pH 6.0**

Positive Controls:

**WB** : HeLa cells, PC-3 cells, mouse heart tissue, mouse spleen tissue

**IHC** : human kidney tissue, human placenta tissue, human colon tissue, human testis tissue, human skin tissue, human liver tissue, human ovary tissue

## Background Information

PARP11, also named as ARTD11, belongs to the ARTD/PARP family. PARP11 is a mono-ADP-ribosyltransferase that mediates mono-ADP-ribosylation of target proteins. PARP11 plays a role in nuclear envelope stability and nuclear remodeling during spermiogenesis (PMID: 25043379). PARP11 has 4 isoforms with the molecular mass of 28-40 kDa.

## Notable Publications

Author	Pubmed ID	Journal	Application
Chunyun Qi	39445214	Front Cell Infect Microbiol	WB, IF

## Storage

Storage:

Store at -20°C. Stable for one year after shipment.

Storage Buffer:

PBS with 0.02% sodium azide and 50% glycerol pH 7.3.

Aliquoting is unnecessary for -20°C storage

\*\*\* 20ul sizes contain 0.1% BSA

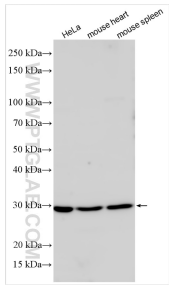
For technical support and original validation data for this product please contact:

T: 1 (888) 4PTGLAB (1-888-478-4522) (toll free in USA), or 1(312) 455-8498 (outside USA)

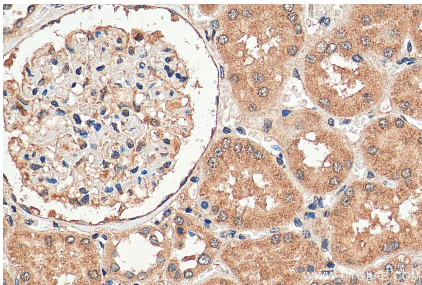
E: [proteintech@ptglab.com](mailto:proteintech@ptglab.com)  
W: [ptglab.com](http://ptglab.com)

This product is exclusively available under Proteintech Group brand and is not available to purchase from any other manufacturer.

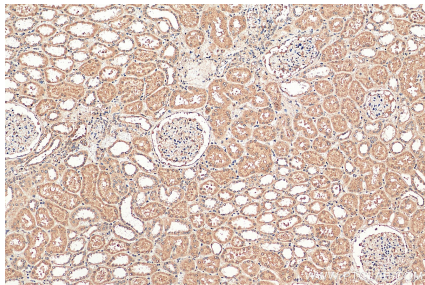
Selected Validation Data



Various lysates were subjected to SDS PAGE followed by western blot with 16692-1-AP (PARP11 antibody) at dilution of 1:1000 incubated at room temperature for 1.5 hours.



Immunohistochemical analysis of paraffin-embedded human kidney tissue slide using 16692-1-AP (PARP11 antibody) at dilution of 1:200 (under 40x lens). Heat mediated antigen retrieval with Tris-EDTA buffer (pH 9.0).



Immunohistochemical analysis of paraffin-embedded human kidney tissue slide using 16692-1-AP (PARP11 antibody) at dilution of 1:200 (under 10x lens). Heat mediated antigen retrieval with Tris-EDTA buffer (pH 9.0).