

For Research Use Only

# CA13 Polyclonal ANTIBODY

Catalog Number: 16696-1-AP



## Basic Information

<b>Catalog Number:</b> 16696-1-AP	<b>GenBank Accession Number:</b> BC052602	<b>Purification Method:</b> Antigen affinity purification
<b>Size:</b> 150UL, Concentration: 173 µg/ml by Bradford method using BSA as the standard;	<b>GeneID (NCBI):</b> 377677	<b>Recommended Dilutions:</b> WB 1:500-1:3000 IHC 1:20-1:200 IF 1:50-1:500
<b>Source:</b> Rabbit	<b>Full Name:</b> carbonic anhydrase XIII	
<b>Isotype:</b> IgG	<b>Calculated MW:</b> 262 aa, 29 kDa	
<b>Immunogen Catalog Number:</b> AG10086	<b>Observed MW:</b> 30 kDa	

## Applications

### Tested Applications:

IF, IHC, WB, ELISA

### Species Specificity:

human, mouse, rat

**Note-IHC: suggested antigen retrieval with TE buffer pH 9.0; (\*) Alternatively, antigen retrieval may be performed with citrate buffer pH 6.0**

### Positive Controls:

WB: NIH/3T3 cells, mouse skeletal muscle tissue

IHC: human placenta tissue, human heart tissue, human kidney tissue, human spleen tissue, human testis tissue

IF: NIH/3T3 cells,

## Background Information

Carbonic anhydrases (CAs) are zinc-containing metalloenzymes that catalyze reversible hydration of carbon dioxide. The mammalian  $\alpha$ -CA gene family has been reported to include at least eleven enzymatically active isoforms with different structural and catalytic properties. Four of the active CA isozymes are cytosolic (CA I, II, III, and VII), four are membrane-associated (CA IV, IX, XII, and XIV), two are mitochondrial (CA VA and VB), and one is a secretory form (CA VI). CA13 is a cytosolic protein that may play a role in embryogenesis and perturbation of its function by genetic modification could potentially lead to developmental abnormalities (PMID:14600151).

## Storage

### Storage:

Store at -20°C. Stable for one year after shipment.

### Storage Buffer:

PBS with 0.02% sodium azide and 50% glycerol pH 7.3.

Aliquoting is unnecessary for -20°C storage

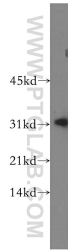
For technical support and original validation data for this product please contact:

T: 1 (888) 4PTGLAB (1-888-478-4522) (toll free in USA), or 1(312) 455-8498 (outside USA)

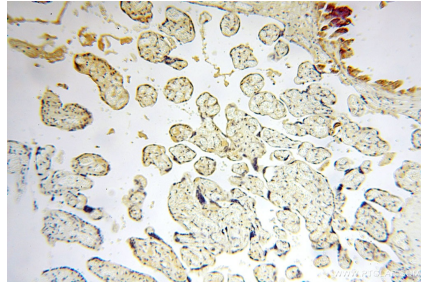
E: proteintech@ptglab.com  
W: ptglab.com

**This product is exclusively available under Proteintech Group brand and is not available to purchase from any other manufacturer.**

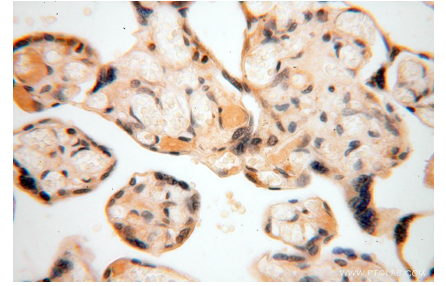
## Selected Validation Data



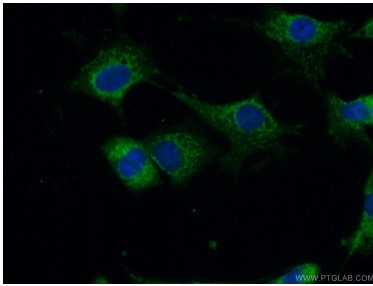
NIH/3T3 cells were subjected to SDS PAGE followed by western blot with 16696-1-AP (CA13 antibody) at dilution of 1:500 incubated at room temperature for 1.5 hours.



Immunohistochemical analysis of paraffin-embedded human placenta using 16696-1-AP (CA13 antibody) at dilution of 1:100 (under 10x lens).



Immunohistochemical analysis of paraffin-embedded human placenta using 16696-1-AP (CA13 antibody) at dilution of 1:100 (under 40x lens).



Immunofluorescent analysis of (10% Formaldehyde) fixed NIH/3T3 cells using 16696-1-AP (CA13 antibody) at dilution of 1:50 and Alexa Fluor 488-conjugated AffiniPure Goat Anti-Rabbit IgG(H+L).