

For Research Use Only

CYP20A1 Polyclonal ANTIBODY

Catalog Number: 16702-1-AP



Basic Information

Catalog Number: 16702-1-AP	GenBank Accession Number: BC020616	Recommended Dilutions: WB 1:1000-1:4000 IP 0.5-4.0 ug for IP and 1:200-1:1000 for WB IHC 1:50-1:500
Size: 20 µg/150 µl	GenelD (NCBI): 57404	
Source: Rabbit	Full Name: cytochrome P450, family 20, subfamily A, polypeptide 1	
Isotype: IgG	Calculated MW: 462aa, 52 kDa	
Purification Method: Antigen affinity purification	Observed MW: 45 kDa, 60 kDa	
Immunogen Catalog Number: AG10099		

Applications

Tested Applications: IHC, IP, WB, ELISA	Positive Controls: WB : HeLa cells; K-562 cells, MCF-7 cells, mouse lung tissue
Species Specificity: human, mouse, rat	IP : MCF-7 cells;
Note: suggested antigen retrieval with TE buffer pH 9.0; (*) Alternatively, antigen retrieval may be performed with citrate buffer pH 6.0	IHC : human liver cancer tissue;

Background Information

Notable Publications

Author	Pubmed ID	Journal	Application
--------	-----------	---------	-------------

Storage

Storage:
Store at -20°C. Stable for one year after shipment.
Storage Buffer:
PBS with 0.02% sodium azide and 50% glycerol pH 7.3.
Aliquoting is unnecessary for -20°C storage

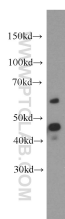
For technical support and original validation data for this product please contact:

T: 1 (888) 4PTGLAB (1-888-478-4522) (toll free in USA), or 1(312) 455-8498 (outside USA)

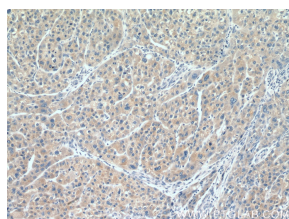
E: proteintech@ptglab.com
W: ptglab.com

This product is exclusively available under Proteintech Group brand and is not available to purchase from any other manufacturer.

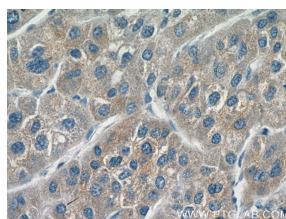
Selected Validation Data



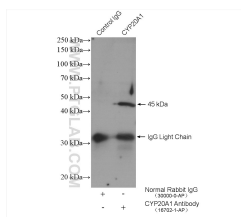
HeLa cells were subjected to SDS PAGE followed by western blot with 16702-1-AP(CYP20A1 antibody) at dilution of 1:2000 incubated at room temperature for 1.5 hours



Immunohistochemistry of paraffin-embedded human liver cancer tissue slide using 16702-1-AP (CYP20A1 antibody) at dilution of 1:200 (under 10x lens).



Immunohistochemistry of paraffin-embedded human liver cancer tissue slide using 16702-1-AP (CYP20A1 antibody) at dilution of 1:200 (under 40x lens).



IP result of anti-CYP20A1(IP: 16702-1-AP, 4ug; Detection: 16702-1-AP 1:300) with MCF-7 cells lysate 2400 ug