

For Research Use Only

Fibrinogen Beta Chain Polyclonal antibody

Catalog Number: 16747-1-AP

Featured Product

14 Publications



Basic Information

Catalog Number:

16747-1-AP

Size:

150ul, Concentration: 550 ug/ml by Nanodrop and 467 ug/ml by Bradford method using BSA as the standard;

Source:

Rabbit

Isotype:

IgG

Immunogen Catalog Number:

AG10169

GenBank Accession Number:

BC107766

GeneID (NCBI):

2244

UNIPROT ID:

P02675

Full Name:

fibrinogen beta chain

Calculated MW:

491 aa, 56 kDa

Observed MW:

50 kDa

Purification Method:

Antigen affinity purification

Recommended Dilutions:

WB: 1:1000-1:8000

IHC: 1:20-1:200

Applications

Tested Applications:

WB, IHC, ELISA

Cited Applications:

WB, IHC, IF

Species Specificity:

human, mouse, rat

Cited Species:

human, mouse, rat, plasmodium falciparum

Note-IHC: suggested antigen retrieval with TE buffer pH 9.0; (*) Alternatively, antigen retrieval may be performed with citrate buffer pH 6.0

Positive Controls:

WB : mouse heart tissue, mouse kidney tissue, mouse brain tissue, mouse liver tissue

IHC : human kidney tissue,

Background Information

Fibrinogen is a soluble plasma glycoprotein synthesized in the liver. It is composed of two sets of three structurally different subunits: alpha (FGA), beta (FGB), gamma (FGG). Fibrinogen is converted by thrombin into fibrin during blood coagulation. Fibrinogen and fibrin play overlapping roles in blood clotting, fibrinolysis, cellular and matrix interactions, the inflammatory response, wound healing, and neoplasia (PMID: 16102057). FGB is the beta chain of fibrinogen. During conversion of fibrinogen to fibrin, fibrinopeptide B is cleaved from FGB by thrombin. Mutations in the gene of FGB lead to several disorders, including afibrinogenemia, dysfibrinogenemia, hypodysfibrinogenemia and thrombotic tendency.

Notable Publications

Author	Pubmed ID	Journal	Application
Eugene V Golanov	31191233	Front Neurosci	WB,IHC,IF
Yuta Matsuno	33852426	Reproduction	WB,IF
Zhihong Bian	34197775	Brain Res	IF

Storage

Storage:

Store at -20°C. Stable for one year after shipment.

Storage Buffer:

PBS with 0.02% sodium azide and 50% glycerol, pH7.3

Aliquoting is unnecessary for -20°C storage

*** 20ul sizes contain 0.1% BSA

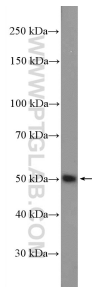
For technical support and original validation data for this product please contact:

T: 1 (888) 4PTGLAB (1-888-478-4522) (toll free in USA), or 1(312) 455-8498 (outside USA)

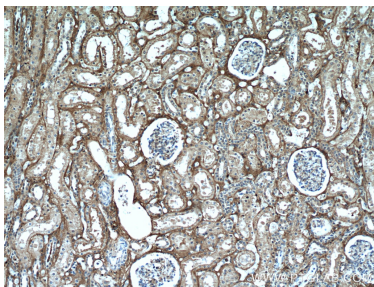
E: proteintech@ptglab.com
W: ptglab.com

This product is exclusively available under Proteintech Group brand and is not available to purchase from any other manufacturer.

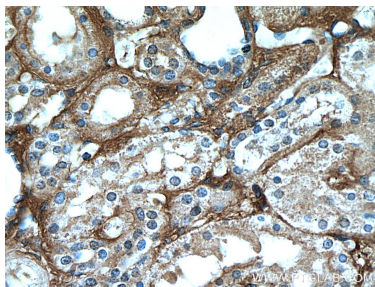
Selected Validation Data



mouse heart tissue were subjected to SDS PAGE followed by western blot with 16747-1-AP (Fibrinogen beta chain antibody) at dilution of 1:4000 incubated at room temperature for 1.5 hours.



Immunohistochemical analysis of paraffin-embedded human kidney using 16747-1-AP (Fibrinogen beta chain antibody) at dilution of 1:50 (under 10x lens).



Immunohistochemical analysis of paraffin-embedded human kidney using 16747-1-AP (Fibrinogen beta chain antibody) at dilution of 1:50 (under 40x lens).