

For Research Use Only

METTL5 Polyclonal antibody

Catalog Number: 16791-1-AP

Featured Product

20 Publications



Basic Information

Catalog Number:

16791-1-AP

Size:

150ul, Concentration: 750 ug/ml by Nanodrop;

Source:

Rabbit

Isotype:

IgG

Immunogen Catalog Number:

AG10232

GenBank Accession Number:

BC000921

GeneID (NCBI):

29081

UNIPROT ID:

Q9NRN9

Full Name:

methyltransferase like 5

Calculated MW:

209 aa, 24 kDa

Observed MW:

24-27 kDa

Purification Method:

Antigen affinity purification

Recommended Dilutions:

WB: 1:2000-1:12000

IP: 0.5-4.0 ug for 1.0-3.0 mg of total protein lysate

IHC: 1:400-1:1000

IF/ICC: 1:200-1:800

Applications

Tested Applications:

WB, IHC, IF/ICC, IP, ELISA

Cited Applications:

WB, IHC, RIP

Species Specificity:

human

Cited Species:

human

Note-IHC: suggested antigen retrieval with TE buffer pH 9.0; (*) Alternatively, antigen retrieval may be performed with citrate buffer pH 6.0

Positive Controls:

WB: HEK-293 cells, HeLa cells, K-562 cells, PC-3 cells

IP: PC-3 cells,

IHC: rat kidney tissue, mouse kidney tissue

IF/ICC: HepG2 cells,

Background Information

METTL5 is a member of the METTL family of S-adenosyl-methionine-dependent methyltransferases that adds m6A to a specific site, nucleotide A-1832 of 18S rRNA, hereafter referred to as m6A1832. METTL5 is localized in the nucleolus and cytoplasm.

Notable Publications

| Author | Pubmed ID | Journal | Application |
|-----------------------|-----------|----------------------|-------------|
| Jian Zhang | 36465115 | iScience | WB |
| Caraline Sepich-Poore | 35033535 | J Biol Chem | WB |
| Yanchuang Han | 35295259 | Front Cardiovasc Med | WB |

Storage

Storage:

Store at -20°C. Stable for one year after shipment.

Storage Buffer:

PBS with 0.02% sodium azide and 50% glycerol, pH7.3

Aliquoting is unnecessary for -20°C storage

*** 20ul sizes contain 0.1% BSA

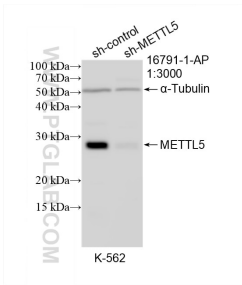
For technical support and original validation data for this product please contact:

T: 1 (888) 4PTGLAB (1-888-478-4522) (toll free in USA), or 1(312) 455-8498 (outside USA)

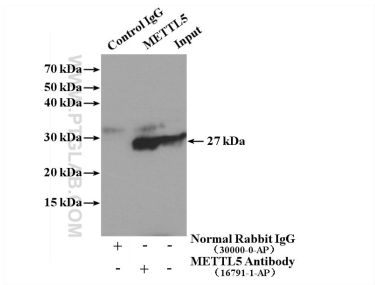
E: proteintech@ptglab.com
W: ptglab.com

This product is exclusively available under Proteintech Group brand and is not available to purchase from any other manufacturer.

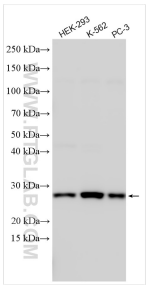
Selected Validation Data



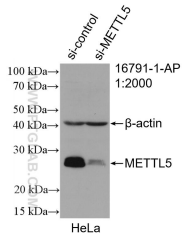
WB result of METTL5 antibody (16791-1-AP; 1:3000; incubated at room temperature for 1.5 hours) with sh-Control and sh-METTL5 transfected K-562 cells.



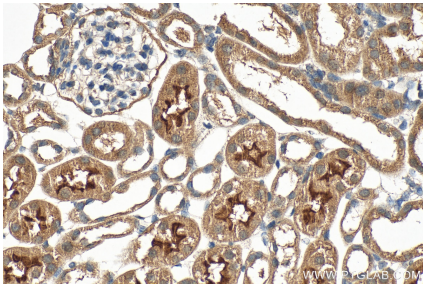
IP result of anti-METTL5 (IP:16791-1-AP, 4ug; Detection:16791-1-AP 1:500) with PC-3 cells lysate 3840 ug.



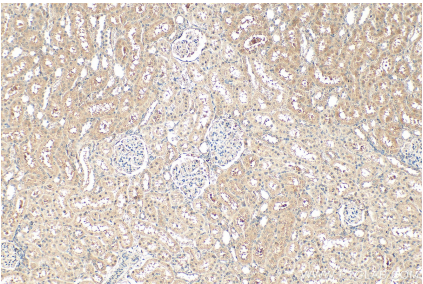
Various lysates were subjected to SDS PAGE followed by western blot with 16791-1-AP (METTL5 antibody) at dilution of 1:6000 incubated at room temperature for 1.5 hours.



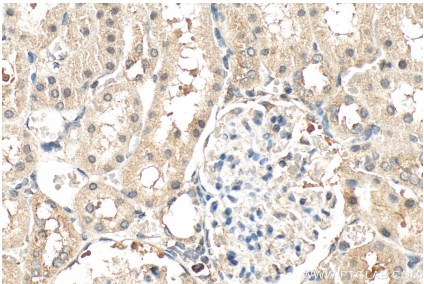
WB result of METTL5 antibody (16791-1-AP; 1:1000; incubated at room temperature for 1.5 hours) with sh-Control and sh-METTL5 transfected HeLa cells.



Immunohistochemical analysis of paraffin-embedded mouse kidney tissue slide using 16791-1-AP (METTL5 antibody) at dilution of 1:1000 (under 40x lens). Heat mediated antigen retrieval with Tris-EDTA buffer (pH 9.0).



Immunohistochemical analysis of paraffin-embedded rat kidney tissue slide using 16791-1-AP (METTL5 antibody) at dilution of 1:1000 (under 10x lens). Heat mediated antigen retrieval with Tris-EDTA buffer (pH 9.0).



Immunohistochemical analysis of paraffin-embedded rat kidney tissue slide using 16791-1-AP (METTL5 antibody) at dilution of 1:1000 (under 40x lens). Heat mediated antigen retrieval with Tris-EDTA buffer (pH 9.0).



Immunofluorescent analysis of (-20°C Ethanol) fixed HepG2 cells using METTL5 antibody (16791-1-AP) at dilution of 1:400 and CoraLite®488-Conjugated AffiniPure Goat Anti-Rabbit IgG(H+L), CL594-phalloidin (red).