

For Research Use Only

Cytokeratin 1-specific Polyclonal ANTIBODY



Catalog Number: 16848-1-AP **4 Publications**

Basic Information

Catalog Number:

16848-1-AP

Size:

150UL, Concentration: 347 µg/ml by Bradford method using BSA as the standard;

Source:

Rabbit

Isotype:

IgG

GenBank Accession Number:

NM_006121

GeneID (NCBI):

3848

Full Name:

keratin 1

Calculated MW:

66 kDa

Observed MW:

67 kDa

Purification Method:

Antigen affinity purification

Recommended Dilutions:

WB 1:500-1:2000

IP 0.5-4.0 ug for IP and 1:500-1:1000 for WB

IHC 1:20-1:200

IF 1:20-1:200

Applications

Tested Applications:

IF, IHC, IP, WB, ELISA

Cited Applications:

IF, IHC, WB

Species Specificity:

human, mouse

Cited Species:

goat, human, mouse

Note-IHC: suggested antigen retrieval with TE buffer pH 9.0; (*) Alternatively, antigen retrieval may be performed with citrate buffer pH 6.0

Positive Controls:

WB: mouse skin tissue, A375 cells, A431 cells

IP: A431 cells,

IHC: human skin tissue, human cervix tissue, human lung cancer tissue

IF: A431 cells,

Background Information

Keratins are a large family of proteins that form the intermediate filament cytoskeleton of epithelial cells, which are classified into two major sequence types. Type I keratins are a group of acidic intermediate filament proteins, including K9-K23, and the hair keratins Ha1-Ha8. Type II keratins are the basic or neutral counterparts to the acidic type I keratins, including K1-K8, and the hair keratins, Hb1-Hb6. Keratin-1 is type II keratin. It is a specific marker for terminal differentiation in mammalian epidermis. It is specifically expressed in the spinous and granular layers of the epidermis with family member KRT10 and mutations in these genes have been associated with bullous congenital ichthyosiform erythroderma. This antibody is specifically against keratin I.

Notable Publications

Author	Pubmed ID	Journal	Application
Shidi Wu	31790685	Life Sci	IHC
Min Li	32256770	Exp Ther Med	WB
Sen Ma	32806500	Animals (Basel)	WB

Storage

Storage:

Store at -20°C. Stable for one year after shipment.

Storage Buffer:

PBS with 0.02% sodium azide and 50% glycerol pH 7.3.

Aliquoting is unnecessary for -20°C storage

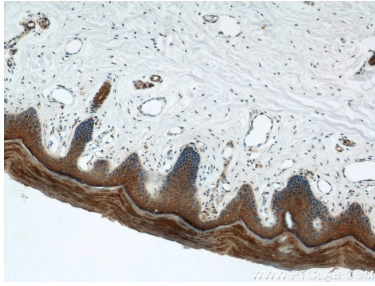
For technical support and original validation data for this product please contact:

T: 1 (888) 4PTGLAB (1-888-478-4522) (toll free in USA), or 1(312) 455-8498 (outside USA)

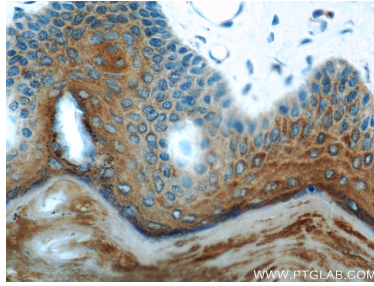
E: proteintech@ptglab.com
W: ptglab.com

This product is exclusively available under Proteintech Group brand and is not available to purchase from any other manufacturer.

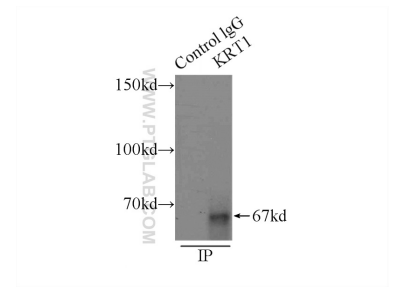
Selected Validation Data



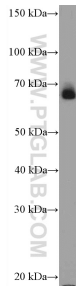
Immunohistochemical analysis of paraffin-embedded human skin using 16848-1-AP (Cytokeratin 1-specific antibody) at dilution of 1:100 (under 10x lens).



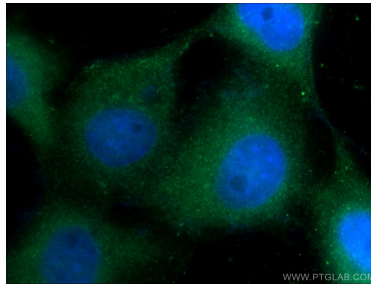
Immunohistochemical analysis of paraffin-embedded human skin using 16848-1-AP (Cytokeratin 1-specific antibody) at dilution of 1:100 (under 40x lens).



IP Result of anti-Cytokeratin 1-specific (IP:16848-1-AP, 3ug; Detection:16848-1-AP 1:500) with A431 cells lysate 3500ug.



mouse skin tissue were subjected to SDS PAGE followed by western blot with 16848-1-AP (Cytokeratin 1-specific antibody at dilution of 1:1000 incubated at room temperature for 1.5 hours).



Immunofluorescent analysis of A431 cells using 16848-1-AP (Cytokeratin 1-specific antibody) at dilution of 1:50 and Alexa Fluor 488-conjugated AffiniPure Goat Anti-Rabbit IgG(H+L).