

For Research Use Only

# AMOTL1 Polyclonal ANTIBODY



Catalog Number: 16871-1-AP **2 Publications**

## Basic Information

<b>Catalog Number:</b> 16871-1-AP	<b>GenBank Accession Number:</b> NM_130847	<b>Purification Method:</b> Antigen affinity purification
<b>Size:</b> 150UL, Concentration: 187 µg/ml by Bradford method using BSA as the standard;	<b>GeneID (NCBI):</b> 154810	<b>Recommended Dilutions:</b> WB 1:500-1:1000
<b>Source:</b> Rabbit	<b>Full Name:</b> angiotenin like 1	
<b>Isotype:</b> IgG	<b>Calculated MW:</b> 107 kDa	
	<b>Observed MW:</b> 107 kDa	

## Applications

<b>Tested Applications:</b> WB, ELISA	<b>Positive Controls:</b> WB: HeLa cells,
<b>Cited Applications:</b> IF, WB	
<b>Species Specificity:</b> human, mouse, rat	
<b>Cited Species:</b> human, mouse	

## Background Information

The protein encoded by this gene is a peripheral membrane protein that is a component of tight junctions or TJs. TJs form an apical junctional structure and act to control paracellular permeability and maintain cell polarity. This protein is related to angiotenin, an angiotenin binding protein that regulates endothelial cell migration and capillary formation.

## Notable Publications

Author	Pubmed ID	Journal	Application
Rioto Suzuki	27179426	Pulm Pharmacol Ther	WB,IF
Anna Ulbricht	23434281	Curr Biol	WB

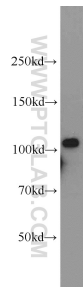
## Storage

**Storage:**  
Store at -20°C. Stable for one year after shipment.  
**Storage Buffer:**  
PBS with 0.02% sodium azide and 50% glycerol pH 7.3.  
Aliquoting is unnecessary for -20°C storage

For technical support and original validation data for this product please contact:  
T: 1 (888) 4PTGLAB (1-888-478-4522) (toll free in USA), or 1(312) 455-8498 (outside USA)  
E: proteintech@ptglab.com  
W: ptglab.com

This product is exclusively available under Proteintech Group brand and is not available to purchase from any other manufacturer.

## Selected Validation Data



HeLa cells were subjected to SDS PAGE followed by western blot with 16871-1-AP (AMOTL1 antibody) at dilution of 1:500 incubated at room temperature for 1.5 hours.