

For Research Use Only

C1qC Polyclonal antibody

Catalog Number: 16889-1-AP

Featured Product

5 Publications



Basic Information

Catalog Number:

16889-1-AP

Size:

150ul, Concentration: 200 ug/ml by Nanodrop and 133 ug/ml by Bradford method using BSA as the standard;

Source:

Rabbit

Isotype:

IgG

Immunogen Catalog Number:

AG10400

GenBank Accession Number:

BC009016

GeneID (NCBI):

714

UNIPROT ID:

P02747

Full Name:

complement component 1, q subcomponent, C chain

Calculated MW:

245 aa, 26 kDa

Observed MW:

24-26 kDa

Purification Method:

Antigen affinity purification

Recommended Dilutions:

WB 1:2000-1:10000

IHC 1:20-1:200

Applications

Tested Applications:

WB, IHC, ELISA

Cited Applications:

WB, IHC, IF

Species Specificity:

human, mouse, rat

Cited Species:

human, mouse

Positive Controls:

WB : human plasma, mouse serum, rat plasma

IHC : human liver tissue,

Note-IHC: suggested antigen retrieval with TE buffer pH 9.0; (*) Alternatively, antigen retrieval may be performed with citrate buffer pH 6.0

Background Information

The first component of complement, C1, is a calcium-dependent complex of the 3 subcomponents C1q, C1r, and C1s. C1q is composed of 18 polypeptide chains: six A-chains, six B-chains, and six C-chains. Each chain contains a collagen-like region located near the N terminus and a C-terminal globular region. Deficiency of C1q has been associated with lupus erythematosus and glomerulonephritis. This antibody is raised against C1qC which is the C-chain polypeptide of human complement subcomponent C1q.

Notable Publications

Author	Pubmed ID	Journal	Application
Wei Dong	36471393	World J Surg Oncol	WB
Yang Yang	39753879	Sci Rep	IHC
Cheng Huang	39531193	Mol Neurobiol	WB,IF

Storage

Storage:

Store at -20°C. Stable for one year after shipment.

Storage Buffer:

PBS with 0.02% sodium azide and 50% glycerol, pH7.3

Aliquoting is unnecessary for -20°C storage

*** 20ul sizes contain 0.1% BSA

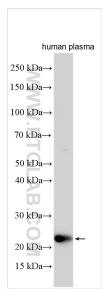
For technical support and original validation data for this product please contact:

T: 1 (888) 4PTGLAB (1-888-478-4522) (toll free in USA), or 1(312) 455-8498 (outside USA)

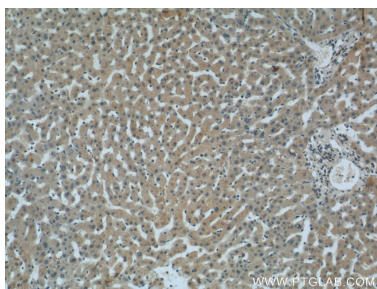
E: proteintech@ptglab.com
W: ptglab.com

This product is exclusively available under Proteintech Group brand and is not available to purchase from any other manufacturer.

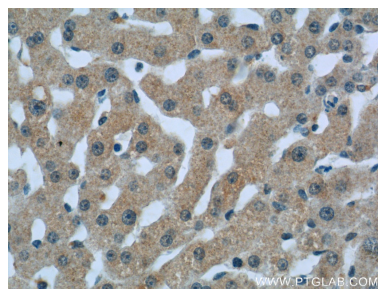
Selected Validation Data



human plasma was subjected to SDS PAGE followed by western blot with 16889-1-AP (C1qC antibody) at dilution of 1:5000 incubated at room temperature for 1.5 hours.



Immunohistochemical analysis of paraffin-embedded human liver tissue slide using 16889-1-AP (C1Q Antibody) at dilution of 1:50 (under 10x lens).



Immunohistochemical analysis of paraffin-embedded human liver tissue slide using 16889-1-AP (C1Q Antibody) at dilution of 1:50 (under 40x lens).