

For Research Use Only

CA2 Polyclonal antibody

Catalog Number: 16961-1-AP **4 Publications**



Basic Information

Catalog Number:

16961-1-AP

Size:

150ul , Concentration: 200 µg/ml by Nanodrop and 200 µg/ml by Bradford method using BSA as the standard;

Source:

Rabbit

Isotype:

IgG

Immunogen Catalog Number:

AG10680

GenBank Accession Number:

BC011949

GeneID (NCBI):

760

Full Name:

carbonic anhydrase II

Calculated MW:

260 aa, 29 kDa

Observed MW:

29 kDa

Purification Method:

Antigen affinity purification

Recommended Dilutions:

WB 1:500-1:2000

IP 0.5-4.0 ug for IP and 1:500-1:1000 for WB

Applications

Tested Applications:

IP, WB, ELISA

Cited Applications:

IHC, WB

Species Specificity:

human, mouse, rat

Cited Species:

human, mouse

Positive Controls:

WB : HEK-293 cells, human stomach tissue, mouse colon tissue, mouse kidney tissue, mouse ovary tissue, rat kidney tissue, U2OS cells

IP : mouse kidney tissue,

Background Information

CA2(carbonic anhydrase II) is also named as Car2, CA-II, CAII and belongs to the alpha-carbonic anhydrase family. It reversibly hydrates CO₂ in cellular ion transport and homeostasis. CA2 is essential for bone resorption and osteoclast differentiation. It regulates SLC9A1 activity via a phosphorylation-regulated CAII binding site in SLC9A1 tail(PMID:16475831). It also may be involved in the development of brain(PMID:16825953). Defects in CA2 are the cause of osteopetrosis autosomal recessive type 3 (OPTB3).

Notable Publications

Author	Pubmed ID	Journal	Application
Jeong Hee Hong	26486891	J Physiol	WB
Kalina Wiatr	34220448	Front Mol Neurosci	WB
Yanzhang Luo	28117408	Sci Rep	WB,IHC

Storage

Storage:

Store at -20°C. Stable for one year after shipment.

Storage Buffer:

PBS with 0.02% sodium azide and 50% glycerol pH 7.3.

Aliquoting is unnecessary for -20°C storage

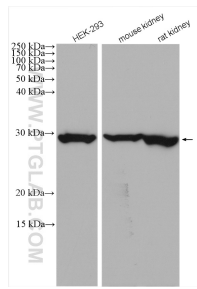
For technical support and original validation data for this product please contact:

T: 1 (888) 4PTGLAB (1-888-478-4522) (toll free in USA), or 1(312) 455-8498 (outside USA)

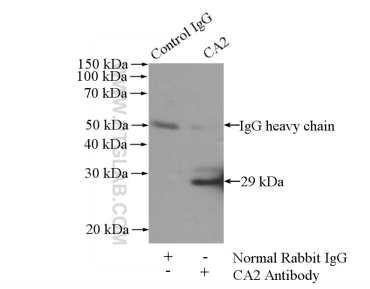
E: proteintech@ptglab.com
W: ptglab.com

This product is exclusively available under Proteintech Group brand and is not available to purchase from any other manufacturer.

Selected Validation Data



Various lysates were subjected to SDS PAGE followed by western blot with 16961-1-AP (CA2 antibody) at dilution of 1:1000 incubated at room temperature for 1.5 hours.



IP Result of anti-CA2 (IP:16961-1-AP, 4ug; Detection:16961-1-AP 1:500) with mouse kidney tissue lysate 4000ug.