

For Research Use Only

GTF2IRD1 Polyclonal antibody

Catalog Number: 17052-1-AP



Basic Information

Catalog Number:

17052-1-AP

Size:

150ul , Concentration: 700 µg/ml by Nanodrop and 227 µg/ml by Bradford method using BSA as the standard;

Source:

Rabbit

Isotype:

IgG

Immunogen Catalog Number:

AG10718

GenBank Accession Number:

BC018136

GeneID (NCBI):

9569

Full Name:

GTF2I repeat domain containing 1

Calculated MW:

959 aa, 106 kDa

Observed MW:

145 kDa, 120 kDa

Purification Method:

Antigen affinity purification

Recommended Dilutions:

WB 1:500-1:3000

IP 0.5-4.0 ug for IP and 1:500-1:1000 for WB

IHC 1:50-1:500

IF 1:50-1:500

Applications

Tested Applications:

IF, IHC, IP, WB, ELISA

Species Specificity:

human, mouse, rat

Note-IHC: suggested antigen retrieval with TE buffer pH 9.0; (*) Alternatively, antigen retrieval may be performed with citrate buffer pH 6.0

Positive Controls:

WB: HeLa cells, mouse brain tissue, mouse kidney tissue, mouse liver tissue

IP: mouse liver tissue,

IHC: human testis tissue, human spleen tissue, human kidney tissue, human heart tissue, human ovary tissue, human skin tissue, human brain tissue, human liver tissue

IF: HeLa cells,

Background Information

Storage

Storage:

Store at -20°C. Stable for one year after shipment.

Storage Buffer:

PBS with 0.02% sodium azide and 50% glycerol pH 7.3.

Aliquoting is unnecessary for -20°C storage

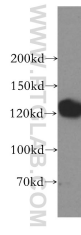
For technical support and original validation data for this product please contact:

T: 1 (888) 4PTGLAB (1-888-478-4522) (toll free in USA), or 1(312) 455-8498 (outside USA)

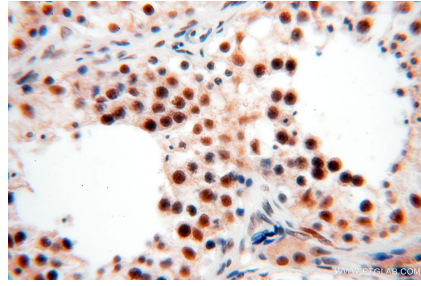
E: proteintech@ptglab.com
W: ptglab.com

This product is exclusively available under Proteintech Group brand and is not available to purchase from any other manufacturer.

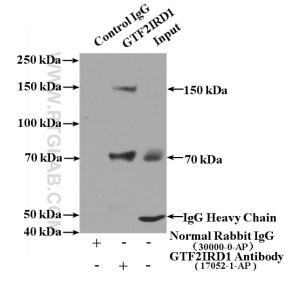
Selected Validation Data



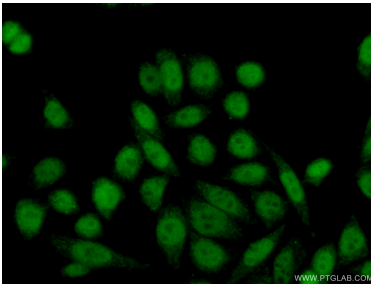
HeLa cells were subjected to SDS PAGE followed by western blot with 17052-1-AP (GTF2IRD1 antibody) at dilution of 1:500 incubated at room temperature for 1.5 hours.



Immunohistochemical analysis of paraffin-embedded human testis using 17052-1-AP (GTF2IRD1 antibody) at dilution of 1:100 (under 40x lens).



IP Result of anti-GTF2IRD1 (IP:17052-1-AP, 4ug; Detection:17052-1-AP 1:500) with mouse liver tissue lysate 4000ug.



Immunofluorescent analysis of (10% Formaldehyde) fixed HeLa cells using 17052-1-AP (GTF2IRD1 antibody) at dilution of 1:50 and Alexa Fluor 488-conjugated AffiniPure Goat Anti-Rabbit IgG(H+L).