

For Research Use Only

TUBGCP4 Polyclonal antibody

Catalog Number: 17088-1-AP



Basic Information

| | | |
|---|--|--|
| Catalog Number: 17088-1-AP | GenBank Accession Number: BC000966 | Purification Method: Antigen affinity purification |
| Size: 150UL, Concentration: 393 µg/ml by Bradford method using BSA as the standard; | GeneID (NCBI): 27229 | Recommended Dilutions: WB 1:500-1:1000 IHC 1:20-1:200 |
| Source: Rabbit | Full Name: tubulin, gamma complex associated protein 4 | |
| Isotype: IgG | Calculated MW: 76 kDa | |
| Immunogen Catalog Number: AG9976 | Observed MW: 76 kDa | |

Applications

| | |
|--|---|
| Tested Applications: IHC, WB, ELISA | Positive Controls: WB : MCF7 cells, HepG2 cells IHC : human placenta tissue, |
| Species Specificity: human, mouse, rat | |
| Note-IHC: suggested antigen retrieval with TE buffer pH 9.0; (*) Alternatively, antigen retrieval may be performed with citrate buffer pH 6.0 | |

Background Information

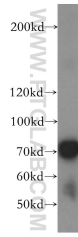
Storage

Storage:
Store at -20°C. Stable for one year after shipment.
Storage Buffer:
PBS with 0.02% sodium azide and 50% glycerol pH 7.3.
Aliquoting is unnecessary for -20°C storage

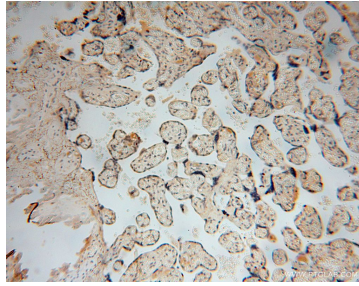
For technical support and original validation data for this product please contact:
T: 1 (888) 4PTGLAB (1-888-478-4522) (toll free in USA), or 1(312) 455-8498 (outside USA)
E: proteintech@ptglab.com
W: ptglab.com

This product is exclusively available under Proteintech Group brand and is not available to purchase from any other manufacturer.

Selected Validation Data



MCF7 cells were subjected to SDS PAGE followed by western blot with 17088-1-AP (TUBGCP4 antibody) at dilution of 1:500 incubated at room temperature for 1.5 hours.



Immunohistochemical analysis of paraffin-embedded human placenta using 17088-1-AP (TUBGCP4 antibody) at dilution of 1:100 (under 10x lens).