

For Research Use Only

# MFF Polyclonal antibody

Catalog Number: 17090-1-AP

Featured Product

69 Publications



## Basic Information

**Catalog Number:**

17090-1-AP

**Size:**

150UL, Concentration: 300 µg/ml by Bradford method using BSA as the standard;

**Source:**

Rabbit

**Isotype:**

IgG

**Immunogen Catalog Number:**

AG9990

**GenBank Accession Number:**

BC000797

**GeneID (NCBI):**

56947

**Full Name:**

mitochondrial fission factor

**Calculated MW:**

38 kDa

**Observed MW:**

26-29 kDa, 35-38 kDa

**Purification Method:**

Antigen affinity purification

**Recommended Dilutions:**

WB 1:500-1:5000

IP 0.5-4.0 µg for IP and 1:500-1:2000 for WB

IHC 1:20-1:200

IF 1:20-1:200

## Applications

**Tested Applications:**

IF, IHC, IP, WB, ELISA

**Cited Applications:**

IF, IHC, IP, WB

**Species Specificity:**

human, mouse, rat

**Cited Species:**

hamster, human, monkey, mouse, rat, squirrels

**Note-IHC: suggested antigen retrieval with TE buffer pH 9.0; (\*) Alternatively, antigen retrieval may be performed with citrate buffer pH 6.0**

**Positive Controls:**

**WB:** human brain tissue, mouse brain tissue, HeLa cells, rat brain tissue

**IP:** mouse brain tissue,

**IHC:** human brain tissue, human heart tissue, human stomach tissue

**IF:** HepG2 cells, Hela cells

## Background Information

MFF (mitochondrial fission factor) is a mitochondrial outer membrane protein that is involved in mitochondrial localization of Drp1 and mitochondrial fission. Multiple isoforms of MFF exist due to the alternative splicing. This antibody recognizes the endogenous MFF protein around 26-29 kDa and 35-38 kDa.

## Notable Publications

Author	Pubmed ID	Journal	Application
Feixiang Bao	30237514	Cell Death Dis	WB
Sameer S Kulkarni	27613809	Diabetes	WB
Reiko Ban-Ishihara	26358295	FEBS Lett	WB, IF

## Storage

**Storage:**

Store at -20°C. Stable for one year after shipment.

**Storage Buffer:**

PBS with 0.02% sodium azide and 50% glycerol pH 7.3.

Aliquoting is unnecessary for -20°C storage

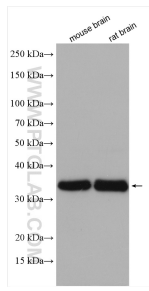
For technical support and original validation data for this product please contact:

T: 1 (888) 4PTGLAB (1-888-478-4522) (toll free in USA), or 1(312) 455-8498 (outside USA)

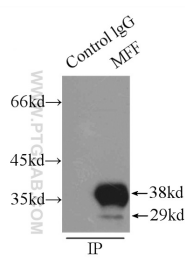
E: proteintech@ptglab.com  
W: ptglab.com

**This product is exclusively available under Proteintech Group brand and is not available to purchase from any other manufacturer.**

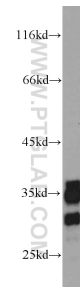
## Selected Validation Data



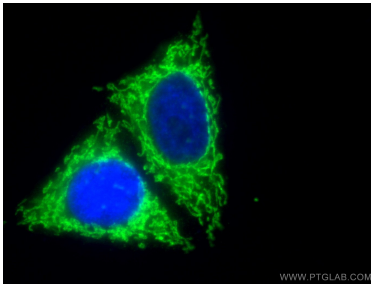
Various lysates were subjected to SDS PAGE followed by western blot with 17090-1-AP (MFF antibody) at dilution of 1:8000 incubated at room temperature for 1.5 hours.



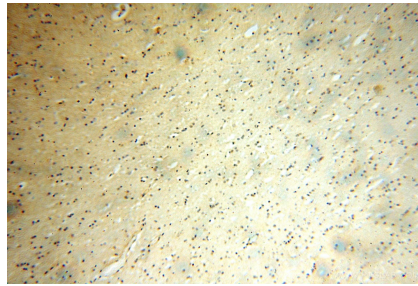
IP Result of anti-MFF (IP:17090-1-AP, 3ug; Detection:17090-1-AP 1:1000) with mouse brain tissue lysate 8000ug.



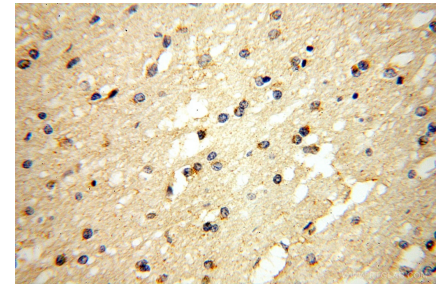
human brain tissue were subjected to SDS PAGE followed by western blot with 17090-1-AP (MFF antibody) at dilution of 1:1000 incubated at room temperature for 1.5 hours.



Immunofluorescent analysis of (10% Formaldehyde) fixed HepG2 cells using 17090-1-AP (MFF antibody) at dilution of 1:100 and Alexa Fluor 488-conjugated AffiniPure Goat Anti-Rabbit IgG(H+L).



Immunohistochemical analysis of paraffin-embedded human brain using 17090-1-AP (MFF antibody) at dilution of 1:100 (under 10x lens).



Immunohistochemical analysis of paraffin-embedded human brain using 17090-1-AP (MFF antibody) at dilution of 1:100 (under 40x lens).