

For Research Use Only

PYCR2 Polyclonal antibody

Catalog Number: 17146-1-AP

Featured Product

10 Publications



Basic Information

Catalog Number:

17146-1-AP

Size:

150UL, Concentration: 500 µg/ml by Nanodrop and 253 µg/ml by Bradford method using BSA as the standard;

Source:

Rabbit

Isotype:

IgG

Immunogen Catalog Number:

AG10918

GenBank Accession Number:

BC020553

GeneID (NCBI):

29920

Full Name:

pyrroline-5-carboxylate reductase family, member 2

Calculated MW:

320 aa, 34 kDa

Observed MW:

34 kDa

Purification Method:

Antigen affinity purification

Recommended Dilutions:

WB 1:2000-1:10000

IP 0.5-4.0 µg for IP and 1:500-1:1000 for WB

IHC 1:1500-1:6000

IF 1:10-1:100

Applications

Tested Applications:

IF, IHC, IP, WB, ELISA

Cited Applications:

IF, WB

Species Specificity:

human, mouse, rat

Cited Species:

African green monkey, human, mouse

Note-IHC: suggested antigen retrieval with TE buffer pH 9.0; (*) Alternatively, antigen retrieval may be performed with citrate buffer pH 6.0

Positive Controls:

WB: HeLa cells, L02 cells, Jurkat cells

IP: Jurkat cells,

IHC: human breast cancer tissue, human placenta tissue, human kidney tissue, human testis tissue, human lung tissue

IF: HeLa cells,

Background Information

PYCR2, also named as P5CR2, belongs to the pyrroline-5-carboxylate reductase family. It catalyses the reaction: L-proline + NAD(P)⁺ = 1-pyrroline-5-carboxylate + NAD(P)H. This antibody may have cross reaction to PYCR1 due to the high homology.

Notable Publications

Author	Pubmed ID	Journal	Application
Wei Liu	26598224	Sci Rep	WB
Simon Schwörer	32134147	EMBO J	WB
Bobby Jones	33446840	Sci Rep	WB

Storage

Storage:

Store at -20°C. Stable for one year after shipment.

Storage Buffer:

PBS with 0.02% sodium azide and 50% glycerol pH 7.3.

Aliquoting is unnecessary for -20°C storage

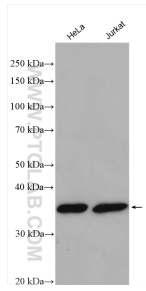
For technical support and original validation data for this product please contact:

T: 1 (888) 4PTGLAB (1-888-478-4522) (toll free in USA), or 1(312) 455-8498 (outside USA)

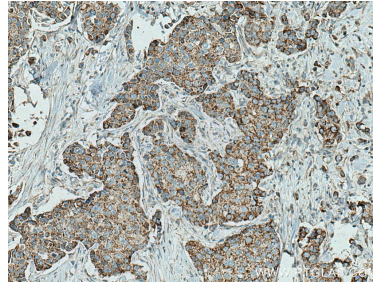
E: proteintech@ptglab.com
W: ptglab.com

This product is exclusively available under Proteintech Group brand and is not available to purchase from any other manufacturer.

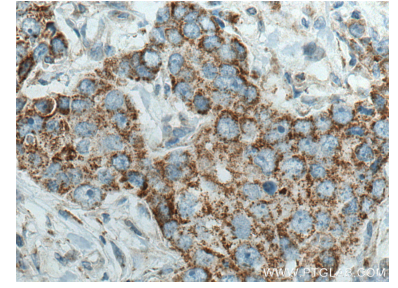
Selected Validation Data



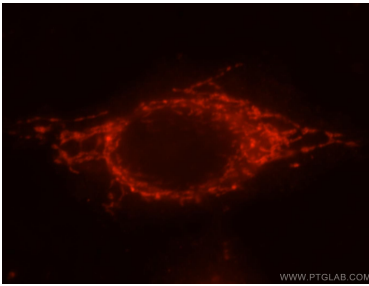
Various lysates were subjected to SDS PAGE followed by western blot with 17146-1-AP (PYCR2 antibody) at dilution of 1:5000 incubated at room temperature for 1.5 hours.



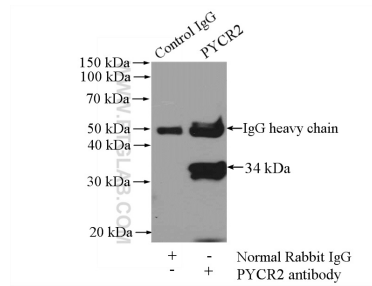
Immunohistochemical analysis of paraffin-embedded human breast cancer tissue slide using 17146-1-AP (PYCR2 antibody) at dilution of 1:3000 (under 10x lens). Heat mediated antigen retrieval with Tris-EDTA buffer (pH 9.0).



Immunohistochemical analysis of paraffin-embedded human breast cancer tissue slide using 17146-1-AP (PYCR2 antibody) at dilution of 1:3000 (under 40x lens). Heat mediated antigen retrieval with Tris-EDTA buffer (pH 9.0).



Immunofluorescent analysis of HeLa cells, using PYCR2 antibody 17146-1-AP at 1:25 dilution and Rhodamine-labeled goat anti-rabbit IgG (red).



IP Result of anti-PYCR2 (IP:17146-1-AP, 4ug; Detection:17146-1-AP 1:500) with Jurkat cells lysate 2400ug.