

For Research Use Only

# PGS1 Polyclonal ANTIBODY

Catalog Number: 17149-1-AP



## Basic Information

<b>Catalog Number:</b> 17149-1-AP	<b>GenBank Accession Number:</b> BC025951	<b>Recommended Dilutions:</b> WB 1:500-1:3000 IF 1:10-1:100
<b>Size:</b> 48 µg/150 µl	<b>GenelD (NCBI):</b> 9489	
<b>Source:</b> Rabbit	<b>Full Name:</b> phosphatidyglycerophosphate synthase 1	
<b>Isotype:</b> IgG	<b>Calculated MW:</b> 556aa, 63 kDa	
<b>Purification Method:</b> Antigen affinity purification	<b>Observed MW:</b> 63 kDa	
<b>Immunogen Catalog Number:</b> AG10961		

## Applications

<b>Tested Applications:</b> IF, WB, ELISA	<b>Positive Controls:</b>
<b>Species Specificity:</b> human,mouse,rat	WB : mouse liver tissue; IF : HeLa cells;
<b>Note: suggested antigen retrieval with TE buffer pH 9.0; (*) Alternatively, antigen retrieval may be performed with citrate buffer pH 6.0</b>	

## Background Information

### Notable Publications

Author	Pubmed ID	Journal	Application
--------	-----------	---------	-------------

## Storage

**Storage:**  
Store at -20°C. Stable for one year after shipment.  
**Storage Buffer:**  
PBS with 0.02% sodium azide and 50% glycerol pH 7.3.  
Aliquoting is unnecessary for -20°C storage

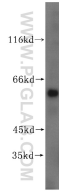
For technical support and original validation data for this product please contact:

T: 1 (888) 4PTGLAB (1-888-478-4522) (toll free in USA), or 1(312) 455-8498 (outside USA)

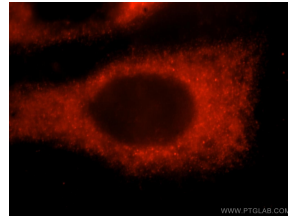
E: [proteintech@ptglab.com](mailto:proteintech@ptglab.com)  
W: [ptglab.com](http://ptglab.com)

This product is exclusively available under Proteintech Group brand and is not available to purchase from any other manufacturer.

## Selected Validation Data



mouse liver tissue were subjected to SDS PAGE followed by western blot with 17149-1-AP (PGS1 antibody) at dilution of 1:500 incubated at room temperature for 1.5 hours



Immunofluorescent analysis of HeLa cells, using PGS1 antibody 17149-1-AP at 1:25 dilution and Rhodamine-labeled goat anti-rabbit IgG (red).