

METTL11A Polyclonal antibody

Catalog Number: 17184-1-AP

Basic Information

Catalog Number:

17184-1-AP

Size:

150ul , Concentration: 350 ug/ml by Nanodrop and 220 ug/ml by Bradford method using BSA as the standard;

Source:

Rabbit

Isotype:

IgG

Immunogen Catalog Number:

AG10967

GenBank Accession Number:

BC033234

GeneID (NCBI):

28989

UNIPROT ID:

Q9BV86

Full Name:

methyltransferase like 11A

Calculated MW:

223 aa, 25 kDa

Observed MW:

16 kDa, 26 kDa

Purification Method:

Antigen affinity purification

Recommended Dilutions:

WB 1:1000-1:8000

IHC 1:50-1:500

IF/ICC 1:200-1:800

Applications

Tested Applications:

WB, IHC, IF/ICC, ELISA

Species Specificity:

human, mouse, rat

Note-IHC: suggested antigen retrieval with TE buffer pH 9.0; (*) Alternatively, antigen retrieval may be performed with citrate buffer pH 6.0

Positive Controls:

WB : A431 cells, HEK-293T cells, HepG2 cells, mouse testis tissue, rat testis tissue

IHC : human ovary cancer tissue,

IF/ICC : HeLa cells,

Background Information

METTL11A, also known as NTMT1 (N^o-trimethyllysine hydrolase), is an enzyme that belongs to the methyltransferase-like (METTL) protein family. It plays a crucial role in epigenetic processes, particularly in the methylation of proteins, which can influence gene expression and other cellular functions. METTL11A is regulated by other members of the METTL family, such as METTL11B and METTL13, which can either activate or inhibit its function.

Storage

Storage:

Store at -20°C. Stable for one year after shipment.

Storage Buffer:

PBS with 0.02% sodium azide and 50% glycerol, pH7.3

Aliquoting is unnecessary for -20°C storage

*** 20ul sizes contain 0.1% BSA

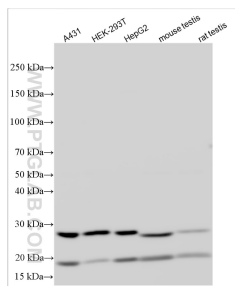
For technical support and original validation data for this product please contact:

T: 1 (888) 4PTGLAB (1-888-478-4522) (toll free in USA), or 1(312) 455-8498 (outside USA)

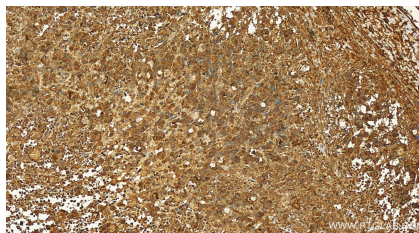
E: proteintech@ptglab.com
W: ptglab.com

This product is exclusively available under Proteintech Group brand and is not available to purchase from any other manufacturer.

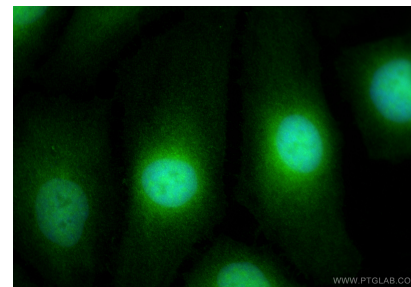
Selected Validation Data



Various lysates were subjected to SDS PAGE followed by western blot with 17184-1-AP (METTL11A antibody) at dilution of 1:4000 incubated at room temperature for 1.5 hours.



Immunohistochemical analysis of paraffin-embedded human ovary cancer tissue slide using 17184-1-AP (METTL11A antibody) at dilution of 1:100 (under 20x lens). Heat mediated antigen retrieval with Tris-EDTA buffer (pH 9.0).



Immunofluorescent analysis of (4% PFA) fixed HeLa cells using METTL11A antibody (17184-1-AP) at dilution of 1:400 and CoraLite®488-Conjugated Goat Anti-Rabbit IgG(H+L) (SA00013-2).