

For Research Use Only

G-CSF Polyclonal antibody

Catalog Number: 17185-1-AP

1 Publications



Basic Information

Catalog Number: 17185-1-AP	GenBank Accession Number: BC033245	Purification Method: Antigen affinity purification
Size: 150ul , Concentration: 170 µg/ml by Nanodrop and 167 µg/ml by Bradford method using BSA as the standard;	GeneID (NCBI): 1440	Recommended Dilutions: IHC 1:20-1:200 IF 1:10-1:100
Source: Rabbit	Full Name: colony stimulating factor 3 (granulocyte)	
Isotype: IgG	Calculated MW: 200 aa, 22 kDa	
Immunogen Catalog Number: AG10968		

Applications

Tested Applications: IF, IHC, ELISA	Positive Controls: IHC : human pancreas tissue, IF : HeLa cells,
Cited Applications: IHC	
Species Specificity: human	
Cited Species: human	

Note-IHC: suggested antigen retrieval with TE buffer pH 9.0; (*) Alternatively, antigen retrieval may be performed with citrate buffer pH 6.0

Background Information

Granulocyte colony-stimulating factor (G-CSF), also referred to as CSF3, is a protective cytokine with anti-inflammatory effects. G-CSF is important in promoting survival of the granulocytic lineage cells and proliferation and migration of neutrophils as well as trophoblast cells. G-CSF acts by binding to its receptor G-CSFR (also called CSF3R), which after binding with G-CSF activates the canonical Janus kinase (Jak)/signal transducer, activator of transcription (STAT) and Ras/Raf/MAP kinase pathways. G-CSF potentially stimulates the proliferation and release of peripheral blood progenitor cells into the bloodstream and is therefore used to treat neutropenia after chemotherapy. Furthermore, G-CSF levels are elevated upon intensive exercise leading to increased neutrophil counts, which are predominantly due to delayed neutrophil apoptosis.

Notable Publications

Author	Pubmed ID	Journal	Application
Zheng Zhang	31765840	Mol Immunol	IHC

Storage

Storage:
Store at -20°C. Stable for one year after shipment.
Storage Buffer:
PBS with 0.02% sodium azide and 50% glycerol pH 7.3.
Aliquoting is unnecessary for -20°C storage

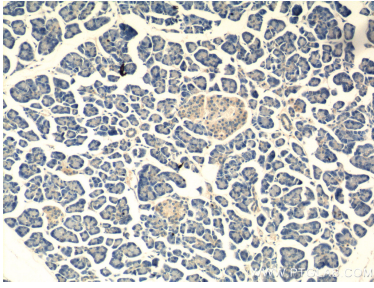
For technical support and original validation data for this product please contact:

T: 1 (888) 4PTGLAB (1-888-478-4522) (toll free in USA), or 1(312) 455-8498 (outside USA)

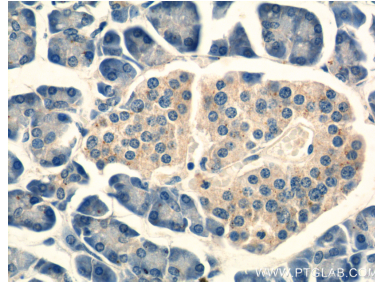
E: proteintech@ptglab.com
W: ptglab.com

This product is exclusively available under Proteintech Group brand and is not available to purchase from any other manufacturer.

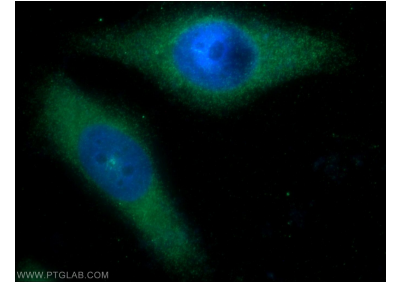
Selected Validation Data



Immunohistochemical analysis of paraffin-embedded human pancreas tissue slide using 17185-1-AP (G-CSF Antibody) at dilution of 1:50 (under 10x lens).



Immunohistochemical analysis of paraffin-embedded human pancreas tissue slide using 17185-1-AP (G-CSF Antibody) at dilution of 1:50 (under 40x lens).



Immunofluorescent analysis of HeLa cells using 17185-1-AP (G-CSF antibody) at dilution of 1:25 and Alexa Fluor 488-conjugated AffiniPure Goat Anti-Rabbit IgG(H+L).