

For Research Use Only

TBC1D15 Polyclonal antibody

Catalog Number: 17252-1-AP

3 Publications



Basic Information

Catalog Number:

17252-1-AP

Size:

150ul, Concentration: 300 ug/ml by Nanodrop and 160 ug/ml by Bradford method using BSA as the standard;

Source:

Rabbit

Isotype:

IgG

Immunogen Catalog Number:

AG10625

GenBank Accession Number:

BC028352

GeneID (NCBI):

64786

UNIPROT ID:

Q8TC07

Full Name:

TBC1 domain family, member 15

Calculated MW:

691 aa, 79 kDa

Observed MW:

79 kDa

Purification Method:

Antigen affinity purification

Recommended Dilutions:

WB: 1:500-1:1000

IF/ICC: 1:200-1:800

Applications

Tested Applications:

WB, IF/ICC, ELISA

Cited Applications:

WB, IF

Species Specificity:

human, mouse, rat

Cited Species:

human

Positive Controls:

WB: HeLa cells, HepG2 cells, HEK-293T cells, A431 cells, mouse liver tissue, rat liver tissue

IF/ICC: HeLa cells,

Background Information

TBC1D15 is a highly conserved protein belonging to the TBC domain family and has similar functions to Rab-GAP. TBC1D15 is ubiquitously expressed and localized predominantly to the cytosol. TBC1D15 is a protein that contains a conserved Tre2/Bub2/Cdc16 (TBC) domain. TBC1D15 can serve as a mitochondrial Rab GTPase-activating protein (Rab-GAP) and influence autophagosome biogenesis and morphology downstream of Parkin activation. TBC1D15 can also control stem cell self-renewal when coupled with the Numb-p53 complex.

Notable Publications

Author	Pubmed ID	Journal	Application
Wei Yang	39983639	J Hazard Mater	WB
You Wu	39812537	Aging Dis	
Alice Zhao	39638786	Cell Death Dis	IF

Storage

Storage:

Store at -20°C. Stable for one year after shipment.

Storage Buffer:

PBS with 0.02% sodium azide and 50% glycerol, pH7.3

Aliquoting is unnecessary for -20°C storage

*** 20ul sizes contain 0.1% BSA

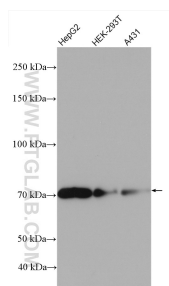
For technical support and original validation data for this product please contact:

T: 1 (888) 4PTGLAB (1-888-478-4522) (toll free in USA), or 1(312) 455-8498 (outside USA)

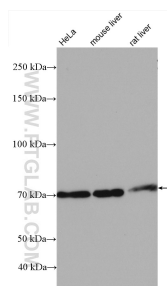
E: proteintech@ptglab.com
W: ptglab.com

This product is exclusively available under Proteintech Group brand and is not available to purchase from any other manufacturer.

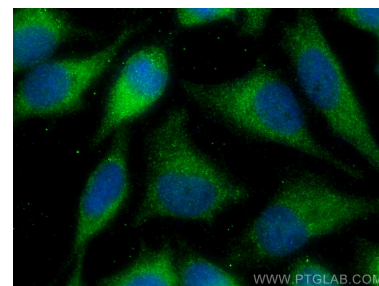
Selected Validation Data



Various lysates were subjected to SDS PAGE followed by western blot with 17252-1-AP (TBC1D15 antibody) at dilution of 1:600 incubated at room temperature for 1.5 hours.



Various lysates were subjected to SDS PAGE followed by western blot with 17252-1-AP (TBC1D15 antibody) at dilution of 1:600 incubated at room temperature for 1.5 hours.



Immunofluorescent analysis of (-20°C Methanol) fixed HeLa cells using TBC1D15 antibody (17252-1-AP) at dilution of 1:400 and CoraLite®488-Conjugated Goat Anti-Rabbit IgG(H+L), CL594-Phalloidin (red).