

For Research Use Only

SARS2 Polyclonal ANTIBODY



Catalog Number: 17258-1-AP **1 Publications**

Basic Information

Catalog Number: 17258-1-AP	GenBank Accession Number: BC042912	Purification Method: Antigen affinity purification
Size: 150UL, Concentration: 267 µg/ml by Bradford method using BSA as the standard;	GeneID (NCBI): 54938	Recommended Dilutions: WB 1:500-1:3000 IHC 1:50-1:500 IF 1:50-1:500
Source: Rabbit	Full Name: seryl-tRNA synthetase 2, mitochondrial	
Isotype: IgG	Calculated MW: 518 aa, 58 kDa	
Immunogen Catalog Number: AG10913	Observed MW: 53 kDa	

Applications

Tested Applications: IF, IHC, WB, ELISA	Positive Controls: WB: HEK-293 cells, HeLa cells, mouse liver tissue, HepG2 cells, rat kidney tissue IHC: human lung cancer tissue, IF: HepG2 cells,
Cited Applications: WB	
Species Specificity: human, mouse, rat	
Cited Species: human	
Note-IHC: suggested antigen retrieval with TE buffer pH 9.0; (*) Alternatively, antigen retrieval may be performed with citrate buffer pH 6.0	

Background Information

Notable Publications

Author	Pubmed ID	Journal	Application
Shasha Gong	31819004	J Biol Chem	WB

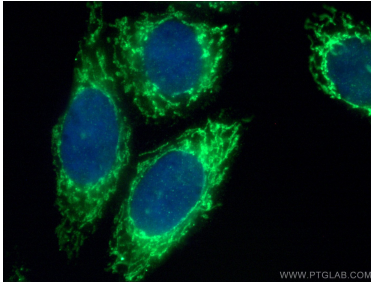
Storage

Storage:
Store at -20°C. Stable for one year after shipment.
Storage Buffer:
PBS with 0.02% sodium azide and 50% glycerol pH 7.3.
Aliquoting is unnecessary for -20°C storage

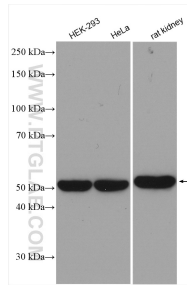
For technical support and original validation data for this product please contact:
T: 1 (888) 4PTGLAB (1-888-478-4522) (toll free in USA), or 1(312) 455-8498 (outside USA)
E: proteintech@ptglab.com
W: ptglab.com

This product is exclusively available under Proteintech Group brand and is not available to purchase from any other manufacturer.

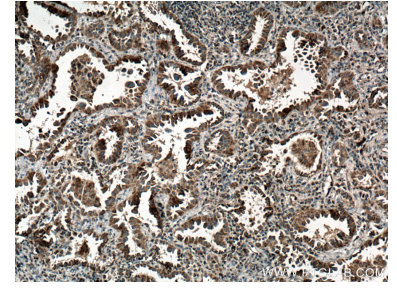
Selected Validation Data



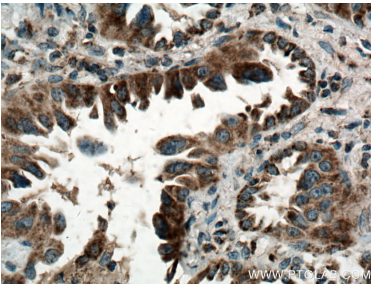
Immunofluorescent analysis of (4% PFA) fixed HepG2 cells using 17258-1-AP (SARS2 antibody) at dilution of 1:50 and Alexa Fluor 488-Conjugated AffiniPure Goat Anti-Rabbit IgG(H+L).



Various lysates were subjected to SDS PAGE followed by western blot with 17258-1-AP (SARS2 antibody) at dilution of 1:1500 incubated at room temperature for 1.5 hours.



Immunohistochemical analysis of paraffin-embedded human lung cancer tissue slide using 17258-1-AP (SARS2 antibody) at dilution of 1:200 (under 10x lens. Heat mediated antigen retrieval with Tris-EDTA buffer (pH 9.0).



Immunohistochemical analysis of paraffin-embedded human lung cancer tissue slide using 17258-1-AP (SARS2 antibody) at dilution of 1:200 (under 40x lens. Heat mediated antigen retrieval with Tris-EDTA buffer (pH 9.0).