

For Research Use Only

MRPS27 Polyclonal ANTIBODY



Catalog Number: 17280-1-AP

Featured Product

17 Publications

Basic Information

Catalog Number:

17280-1-AP

Size:

150UL, Concentration: 353 µg/ml by Bradford method using BSA as the standard;

Source:

Rabbit

Isotype:

IgG

Immunogen Catalog Number:

AG11047

GenBank Accession Number:

BC030521

GeneID (NCBI):

23107

Full Name:

mitochondrial ribosomal protein S27

Calculated MW:

168 aa, 19 kDa, 48 kDa

Observed MW:

48 kDa

Purification Method:

Antigen affinity purification

Recommended Dilutions:

WB 1:500-1:2000

IP 0.5-4.0 µg for IP and 1:500-1:2000 for WB

IHC 1:20-1:200

IF 1:50-1:500

Applications

Tested Applications:

IF, IHC, IP, WB, ELISA

Cited Applications:

IF, WB

Species Specificity:

human, mouse, rat

Cited Species:

human, mouse

Note-IHC: suggested antigen retrieval with TE buffer pH 9.0; (*) Alternatively, antigen retrieval may be performed with citrate buffer pH 6.0

Positive Controls:

WB: A431 cells, human heart tissue, human skeletal muscle tissue

IP: A431 cells,

IHC: human kidney tissue, human lung tissue, human spleen tissue, human testis tissue

IF: HepG2 cells,

Background Information

Genes encoding PPR (pentatricopeptide repeat)-containing proteins constitute one of the largest gene families in plants. The majority of these proteins are predicted to target organelles and to bind to RNA. Strikingly, there is a dearth of these proteins in mammals, although genomic searches reveal six candidates, all of which are also predicted to target the mitochondrion. One of these proteins, MRPS27 is participated in transcription and translation respectively. [PMID:18939947] MRPS27 is a component of the small subunit of the mitochondrial ribosome that is encoded by the nuclear genome [PMID: 11279123].

Notable Publications

Author	Pubmed ID	Journal	Application
Uwe Richter	30262910	Nat Commun	WB
Uwe Richter	26504172	J Cell Biol	WB
Christopher B Jackson	30358850	Hum Mol Genet	WB

Storage

Storage:

Store at -20°C. Stable for one year after shipment.

Storage Buffer:

PBS with 0.02% sodium azide and 50% glycerol pH 7.3.

Aliquoting is unnecessary for -20°C storage

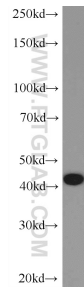
For technical support and original validation data for this product please contact:

T: 1 (888) 4PTGLAB (1-888-478-4522) (toll free in USA), or 1(312) 455-8498 (outside USA)

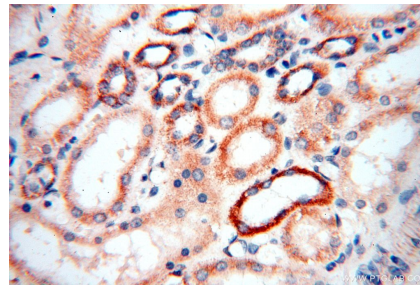
E: proteintech@ptglab.com
W: ptglab.com

This product is exclusively available under Proteintech Group brand and is not available to purchase from any other manufacturer.

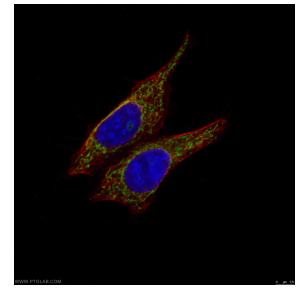
Selected Validation Data



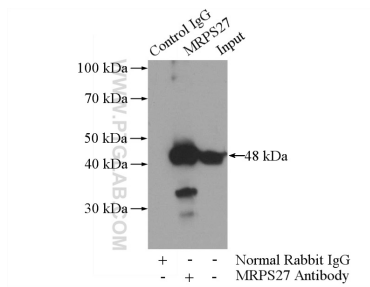
A431 cells were subjected to SDS PAGE followed by western blot with 17280-1-AP (MRPS27 Antibody) at dilution of 1:1000 incubated at room temperature for 1.5 hours.



Immunohistochemical analysis of paraffin-embedded human kidney using 17280-1-AP (MRPS27 antibody) at dilution of 1:100 (under 40x lens).



Immunofluorescent analysis of (-20°C Ethanol) fixed HepG2 cells using MRPS27 rabbit poly (17280-1-AP, Green) and KRT18 mouse mAb (66187-1-Ig, Red) at dilution of 1:50, further stained with Alexa Fluor 488-Conjugated AffiniPure Goat Anti-Rabbit IgG(H+L) for 17280-1-AP, and Alexa Fluor 594-conjugated AffiniPure Goat Anti-Mouse IgG (H+L) for 66187-1-Ig.



IP Result of anti-MRPS27 (IP:17280-1-AP, 3ug; Detection:17280-1-AP 1:1000) with A431 cells lysate 1520ug.