

MYL7

Polyclonal ANTIBODY

Catalog Number: 17283-1-AP

3 Publications

Basic Information

Catalog Number:
17283-1-AP

Size:
54 µg/150 µl

Source:
Rabbit

Isotype:
IgG

Purification Method:
Antigen affinity purification

Immunogen Catalog Number:
AG11058

GenBank Accession Number:
BC027915

GeneID (NCBI):
58498

Full Name:
myosin, light chain 7, regulatory

Calculated MW:
175aa, 19 kDa

Observed MW:
19 kDa

Recommended Dilutions:

WB 1:500-1:2000

IP 0.5-4.0 µg for IP and 1:500-1:1000 for WB

IHC 1:20-1:200

IF 1:50-1:500

Applications

Tested Applications:

IF, IHC, IP, WB, ELISA

Cited Applications:

IF, WB

Species Specificity:

human, mouse, rat

Cited Species:

human, mouse

Note: suggested antigen retrieval with *TE* buffer pH 9.0; (*) Alternatively, antigen retrieval may be performed with *citrate* buffer pH 6.0

Positive Controls:

WB : mouse heart tissue; human heart tissue, mouse skeletal muscle tissue

IP : mouse heart tissue;

IHC : human heart tissue;

IF : mouse heart tissue;

Background Information

MYL7, also known as myosin light chain 2a (MLC2a), is essential for heart development. The expression of MYL7 in heart is predominantly restricted to the atrium. So its expression has been considered as useful marker for atrial cardiomyocytes.

Notable Publications

Author	Pubmed ID	Journal	Application
Yuanbiao Zhao	26354680	Nat Commun	IF
Matthew D Sutcliffe	29352247	Sci Rep	IF
Shishi Li	29456182	Stem Cell Reports	WB

Storage

Storage:

Store at -20°C. Stable for one year after shipment.

Storage Buffer:

PBS with 0.02% sodium azide and 50% glycerol pH 7.3.

Aliquoting is unnecessary for -20°C storage

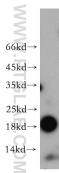
For technical support and original validation data for this product please contact:

T: 1 (888) 4PTGLAB (1-888-478-4522) (toll free in USA), or 1(312) 455-8498 (outside USA)

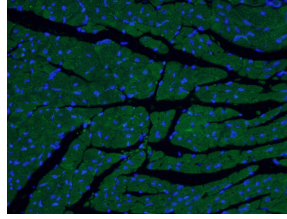
E: proteintech@ptglab.com
W: ptglab.com

This product is exclusively available under Proteintech Group brand and is not available to purchase from any other manufacturer.

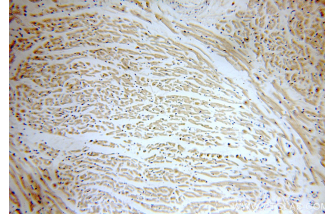
Selected Validation Data



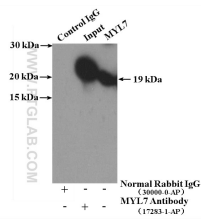
mouse heart tissue were subjected to SDS PAGE followed by western blot with 17283-1-AP(MYL7 antibody) at dilution of 1:800 incubated at room temperature for 1.5 hours



Immunofluorescent analysis of (4% PFA) fixed mouse heart tissue using 17283-1-AP(MYL7 antibody) at dilution of 1:50 and Alexa Fluor 488-conjugated AffiniPure Goat Anti-Rabbit IgG(H+L)



Immunohistochemical of paraffin-embedded human heart using 17283-1-AP(MYL7 antibody) at dilution of 1:100 (under 10x lens)



IP Result of anti-MYL7 (IP:17283-1-AP, 4ug; Detection:17283-1-AP 1:700) with mouse heart tissue lysate 4000ug.