

For Research Use Only

# Cytokeratin 20 Polyclonal ANTIBODY



Catalog Number: 17329-1-AP **5 Publications**

## Basic Information

<b>Catalog Number:</b> 17329-1-AP	<b>GenBank Accession Number:</b> BC031559	<b>Purification Method:</b> Antigen affinity purification
<b>Size:</b> 150UL, Concentration: 200 µg/ml by Bradford method using BSA as the standard;	<b>GeneID (NCBI):</b> 54474	<b>Recommended Dilutions:</b> WB 1:2500-1:10000 IHC 1:1000-1:6400 IF 1:50-1:500
<b>Source:</b> Rabbit	<b>Full Name:</b> keratin 20	
<b>Isotype:</b> IgG	<b>Calculated MW:</b> 424 aa, 48 kDa	
<b>Immunogen Catalog Number:</b> AG11308	<b>Observed MW:</b> 46 kDa	

## Applications

<b>Tested Applications:</b> IF, IHC, WB, ELISA	<b>Positive Controls:</b> WB: COLO 320 cells, HeLa cells IHC: human colon tissue, human stomach cancer tissue, human urothelial carcinoma tissue IF: HeLa cells,
<b>Cited Applications:</b> IF, IHC, WB	
<b>Species Specificity:</b> human, mouse, rat	
<b>Cited Species:</b> human, mouse	
<b>Note-IHC: suggested antigen retrieval with TE buffer pH 9.0; (*) Alternatively, antigen retrieval may be performed with citrate buffer pH 6.0</b>	

## Background Information

Keratins are a large family of proteins that form the intermediate filament cytoskeleton of epithelial cells, which are classified into two major sequence types. Type I keratins are a group of acidic intermediate filament proteins, including K9-K23, and the hair keratins Ha1-Ha8. Type II keratins are the basic or neutral counterparts to the acidic type I keratins, including K1-K8, and the hair keratins, Hb1-Hb6. Keratin 20 is a type I cytokeratin. It is a major cellular protein of mature enterocytes and goblet cells and is specifically found in the gastric and intestinal mucosa.

## Notable Publications

Author	Pubmed ID	Journal	Application
Pingping Zhu	30224759	Nat Cell Biol	WB
Yuli Wang	28288348	Biomaterials	IF
Ben Fogelgren	26046524	PLoS One	IF

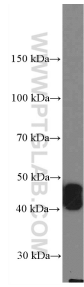
## Storage

**Storage:**  
Store at -20°C. Stable for one year after shipment.  
**Storage Buffer:**  
PBS with 0.02% sodium azide and 50% glycerol pH 7.3.  
Aliquoting is unnecessary for -20°C storage

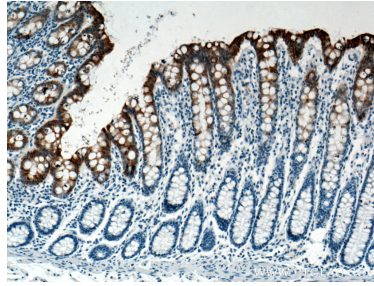
For technical support and original validation data for this product please contact:  
T: 1 (888) 4PTGLAB (1-888-478-4522) (toll free in USA), or 1(312) 455-8498 (outside USA)  
E: proteintech@ptglab.com  
W: ptglab.com

**This product is exclusively available under Proteintech Group brand and is not available to purchase from any other manufacturer.**

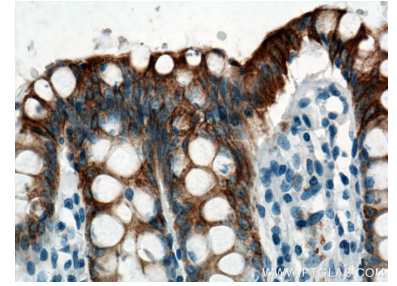
## Selected Validation Data



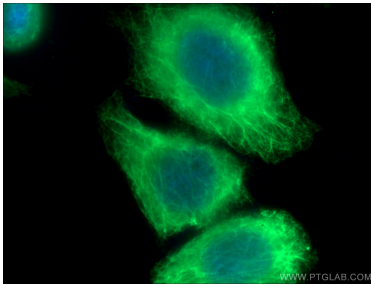
COLO 320 cells were subjected to SDS PAGE followed by western blot with 17329-1-AP (Cytokeratin 20 antibody at dilution of 1:5000) incubated at room temperature for 1.5 hours.



Immunohistochemical analysis of paraffin-embedded human colon tissue slide using 17329-1-AP (Cytokeratin 20 antibody) at dilution of 1:6400 (under 10x lens. Heat mediated antigen retrieval with Tris-EDTA buffer (pH 9.0).



Immunohistochemical analysis of paraffin-embedded human colon tissue slide using 17329-1-AP (Cytokeratin 20 antibody) at dilution of 1:6400 (under 40x lens. Heat mediated antigen retrieval with Tris-EDTA buffer (pH 9.0).



Immunofluorescent analysis of (-20 Ethanol) fixed HeLa cells using 17329-1-AP (Cytokeratin 20 antibody) at dilution of 1:100 and Alexa Fluor 488-conjugated AffiniPure Goat Anti-Rabbit IgG(H+L).