

For Research Use Only

CD1d Polyclonal antibody

Catalog Number: 17336-1-AP

Featured Product



Basic Information

Catalog Number:

17336-1-AP

Size:

150UL, Concentration: 300 µg/ml by Nanodrop and 267 µg/ml by Bradford method using BSA as the standard;

Source:

Rabbit

Isotype:

IgG

Immunogen Catalog Number:

AG11371

GenBank Accession Number:

BC027926

GeneID (NCBI):

912

Full Name:

CD1d molecule

Calculated MW:

335 aa, 38 kDa

Observed MW:

38-40 kDa, 50-55 kDa

Purification Method:

Antigen affinity purification

Recommended Dilutions:

WB 1:500-1:2000

Applications

Tested Applications:

WB, ELISA

Species Specificity:

human, mouse

Positive Controls:

WB: mouse skin tissue, Jurkat cells

Background Information

CD1d is a member of the CD1 family of transmembrane glycoproteins, which are structurally related to the major histocompatibility complex (MHC) proteins and form heterodimers with beta-2-microglobulin. CD1d is an antigen-presenting protein that binds self and non-self glycolipids and presents them to T-cell receptors on NKT cells. When activated, NKT cells rapidly produce Th1 and Th2 cytokines. The molecular weight of unglycosylated CD1d is 38 kDa, while glycosylated form of CD1d is 48-50 kDa.

Storage

Storage:

Store at -20°C. Stable for one year after shipment.

Storage Buffer:

PBS with 0.02% sodium azide and 50% glycerol pH 7.3.

Aliquoting is unnecessary for -20°C storage

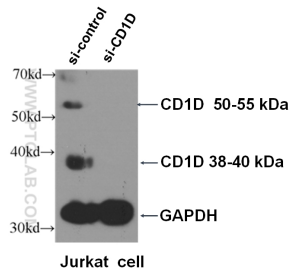
For technical support and original validation data for this product please contact:

T: 1 (888) 4PTGLAB (1-888-478-4522) (toll free in USA), or 1(312) 455-8498 (outside USA)

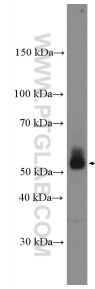
E: proteintech@ptglab.com
W: ptglab.com

This product is exclusively available under Proteintech Group brand and is not available to purchase from any other manufacturer.

Selected Validation Data



WB result of CD1D antibody (17336-1-AP, 1:500) with si-Control and si-CD1D transfected Jurkat cells.



mouse skin tissue were subjected to SDS PAGE followed by western blot with 17336-1-AP (CD1D Antibody) at dilution of 1:1000 incubated at room temperature for 1.5 hours.