

# MEK4

## Polyclonal ANTIBODY

Catalog Number: 17340-1-AP

Featured Product

2 Publications

### Basic Information

Catalog Number:  
17340-1-AP

Size:  
32 µg/150 µl

Source:  
Rabbit

Isotype:  
IgG

Purification Method:  
Antigen affinity purification

Immunogen Catalog Number:  
AG11376

GenBank Accession Number:  
BC036032

GeneID (NCBI):  
6416

Full Name:  
mitogen-activated protein kinase kinase 4

Calculated MW:  
399aa, 44 kDa

Observed MW:  
44-46 kDa

Recommended Dilutions:

WB 1:500-1:2000

IHC 1:20-1:200

### Applications

Tested Applications:

IHC, WB, ELISA

Cited Applications:

WB

Species Specificity:

human, mouse, rat

Cited Species:

human

**Note: suggested antigen retrieval with TE buffer pH 9.0; (\*) Alternatively, antigen retrieval may be performed with citrate buffer pH 6.0**

Positive Controls:

WB : HeLa cells; MCF-7 cells, RAW264.7

IHC : human breast cancer tissue; human liver cancer tissue, human skeletal muscle tissue

### Background Information

MEK4 is also named as JNKK1, MAP2K4, MKK4, PRKM4, SEK1, SERK1, SKK1 and belongs to the protein kinase superfamily. MEK4 is a member of the mitogen-activated protein kinase family, originally identified as a kinase involved in the stress-activated protein kinase pathway by directly phosphorylating c-Jun NH 2-terminal kinase. This protein has 2 isoforms produced by alternative splicing.

### Notable Publications

Author	Pubmed ID	Journal	Application
Xuechao Wan	27594411	Int J Biochem Cell Biol	WB
Jianhui Liu	24532253	Dig Dis Sci	WB

### Storage

Storage:

Store at -20°C. Stable for one year after shipment.

Storage Buffer:

PBS with 0.1% sodium azide and 50% glycerol pH 7.3.

Aliquoting is unnecessary for -20°C storage

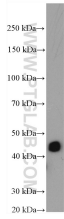
For technical support and original validation data for this product please contact:

T: 1 (888) 4PTGLAB (1-888-478-4522) (toll free in USA), or 1(312) 455-8498 (outside USA)

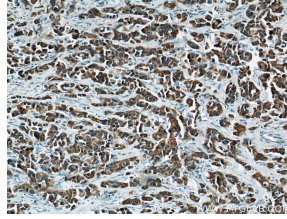
E: [proteintech@ptglab.com](mailto:proteintech@ptglab.com)  
 W: [ptglab.com](http://ptglab.com)

This product is exclusively available under Proteintech Group brand and is not available to purchase from any other manufacturer.

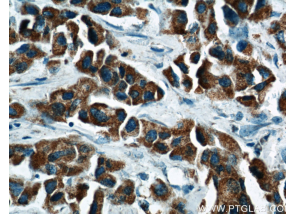
## Selected Validation Data



HeLa cells were subjected to SDS PAGE followed by western blot with 17340-1-AP (MEK4 antibody) at dilution of 1:1000 incubated at room temperature for 1.5 hours



Immunohistochemical of paraffin-embedded human breast cancer using 17340-1-AP (MEK4 antibody) at dilution of 1:50 (under 10x lens)



Immunohistochemical of paraffin-embedded human breast cancer using 17340-1-AP (MEK4 antibody) at dilution of 1:50 (under 40x lens)