

For Research Use Only

# CHDH Polyclonal antibody

Catalog Number: 17356-1-AP

Featured Product

7 Publications



## Basic Information

### Catalog Number:

17356-1-AP

### Size:

150ul, Concentration: 450 ug/ml by Nanodrop and 267 ug/ml by Bradford method using BSA as the standard;

### Source:

Rabbit

### Isotype:

IgG

### Immunogen Catalog Number:

AG10614

### GenBank Accession Number:

BC034502

### GeneID (NCBI):

55349

### UNIPROT ID:

Q8NE62

### Full Name:

choline dehydrogenase

### Calculated MW:

594 aa, 65 kDa

### Observed MW:

60 kDa

### Purification Method:

Antigen affinity purification

### Recommended Dilutions:

WB: 1:2000-1:6000

IHC: 1:50-1:500

## Applications

### Tested Applications:

WB, IHC, ELISA

### Cited Applications:

WB, IHC, IF

### Species Specificity:

human, mouse, rat

### Cited Species:

human, mouse

### Positive Controls:

WB : rat liver tissue, mouse kidney tissue, mouse liver tissue

IHC : human liver cancer tissue,

**Note-IHC: suggested antigen retrieval with TE buffer pH 9.0; (\*) Alternatively, antigen retrieval may be performed with citrate buffer pH 6.0**

## Background Information

CHDH(Choline dehydrogenase, mitochondrial) is also named as CDH,CHD and belongs to the GMC oxidoreductase family. CHDH is a member of the glucose-methanol-choline family of oxidoreductases, with each member containing a consensus FAD-binding domain. Many members of this oxidoreductase family are soluble proteins but mammalian CHDH is associated with the inner mitochondrial membrane(Handbook of vitamins,Robert B,2007). The full length protein(65 kDa) has a transit peptide of 29 amino acid and the mature CHDH is appropriately located in the inner mitochondria membrane(PMID:12951056). 17356-1-AP can also recognize the 45 kDa isoform X3 of CHDH.

## Notable Publications

Author	Pubmed ID	Journal	Application
Taylor McClatchie	28663368	J Biol Chem	WB
Johnson Amy R AR	22558321	PLoS One	IHC
Xuyong Wei	35430532	Transl Oncol	IHC

## Storage

### Storage:

Store at -20°C. Stable for one year after shipment.

### Storage Buffer:

PBS with 0.02% sodium azide and 50% glycerol, pH7.3

Aliquoting is unnecessary for -20°C storage

\*\*\* 20ul sizes contain 0.1% BSA

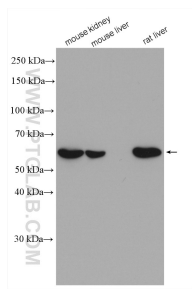
For technical support and original validation data for this product please contact:

T: 1 (888) 4PTGLAB (1-888-478-4522) (toll free in USA), or 1(312) 455-8498 (outside USA)

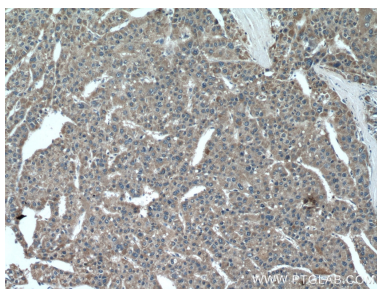
E: proteintech@ptglab.com  
W: ptglab.com

This product is exclusively available under Proteintech Group brand and is not available to purchase from any other manufacturer.

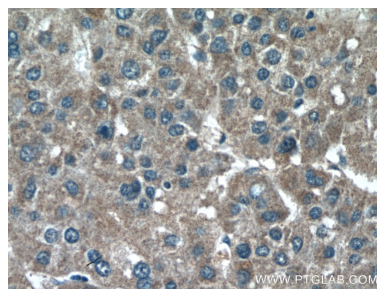
## Selected Validation Data



Various lysates were subjected to SDS PAGE followed by western blot with 17356-1-AP (CHDH antibody) at dilution of 1:5000 incubated at room temperature for 1.5 hours.



Immunohistochemical analysis of paraffin-embedded human liver cancer tissue slide using 17356-1-AP (CHDH antibody) at dilution of 1:200 (under 10x lens).



Immunohistochemical analysis of paraffin-embedded human liver cancer tissue slide using 17356-1-AP (CHDH antibody) at dilution of 1:200 (under 40x lens).