

For Research Use Only

# PLCL2 Polyclonal antibody

Catalog Number: 17421-1-AP **2 Publications**



## Basic Information

<b>Catalog Number:</b> 17421-1-AP	<b>GenBank Accession Number:</b> BC036392	<b>Purification Method:</b> Antigen affinity purification
<b>Size:</b> 150ul , Concentration: 500 µg/ml by Nanodrop and 267 µg/ml by Bradford method using BSA as the standard;	<b>GeneID (NCBI):</b> 23228	<b>Recommended Dilutions:</b> WB 1:1000-1:3000 IF 1:50-1:500
<b>Source:</b> Rabbit	<b>Full Name:</b> phospholipase C-like 2	
<b>Isotype:</b> IgG	<b>Calculated MW:</b> 126 kDa	
<b>Immunogen Catalog Number:</b> AG11443	<b>Observed MW:</b> 126 kDa	

## Applications

<b>Tested Applications:</b> IF, WB, ELISA	<b>Positive Controls:</b> WB : mouse brain tissue, rat brain tissue IF : mouse brain tissue,
<b>Cited Applications:</b> WB	
<b>Species Specificity:</b> human, mouse, rat	
<b>Cited Species:</b> mouse	

## Background Information

PLCL2, a novel phospholipase C-like protein, is expressed in lymphocytes and platelets. The expression of PLCL2 is associated with the proliferation of mature B cells in the immune system. PLCL2 is a new susceptibility loci for myocardial infarction. It has been shown that PLCL2 plays a key role in the pathogenesis of atherosclerosis and systemic sclerosis. There are three isoforms of PLCL2 protein and 17421-1-AP antibody detects the 126 kDa band in SDS-PAGE. (PMID: 24916648, 25880423)

## Notable Publications

Author	Pubmed ID	Journal	Application
Vanitha Bala	25404917	Front Physiol	WB
Mary C Peavey	33707208	Proc Natl Acad Sci U S A	WB

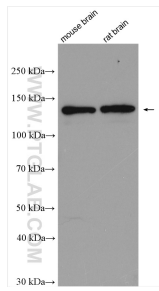
## Storage

**Storage:**  
Store at -20°C. Stable for one year after shipment.  
**Storage Buffer:**  
PBS with 0.02% sodium azide and 50% glycerol pH 7.3.  
Aliquoting is unnecessary for -20°C storage

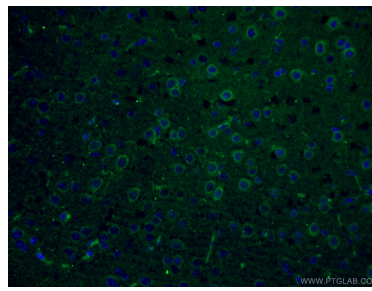
For technical support and original validation data for this product please contact:  
T: 1 (888) 4PTGLAB (1-888-478-4522) (toll free in USA), or 1(312) 455-8498 (outside USA)  
E: proteintech@ptglab.com  
W: ptglab.com

This product is exclusively available under Proteintech Group brand and is not available to purchase from any other manufacturer.

## Selected Validation Data



Various lysates were subjected to SDS PAGE followed by western blot with 17421-1-AP (PLCL2 antibody) at dilution of 1:2000 incubated at room temperature for 1.5 hours.



Immunofluorescent analysis of (4% PFA) fixed mouse brain tissue using 17421-1-AP (PLCL2 antibody) at dilution of 1:50 and CoraLite488-Conjugated AffiniPure Goat Anti-Rabbit IgG(H+L).