

For Research Use Only

KIF26B Polyclonal ANTIBODY



Catalog Number: 17422-1-AP

Featured Product

2 Publications

Basic Information

Catalog Number:

17422-1-AP

Size:

150UL, Concentration: 307 µg/ml by Bradford method using BSA as the standard;

Source:

Rabbit

Isotype:

IgG

Immunogen Catalog Number:

AG11446

GenBank Accession Number:

BC042481

GeneID (NCBI):

55083

Full Name:

kinesin family member 26B

Calculated MW:

2108aa, 224 kDa; 162aa, 17 kDa

Observed MW:

224-230 kDa, 17-22 kDa

Purification Method:

Antigen affinity purification

Recommended Dilutions:

WB 1:200-1:1000

IHC 1:20-1:200

Applications

Tested Applications:

IHC, WB, ELISA

Cited Applications:

IHC, WB

Species Specificity:

human, dog

Cited Species:

human

Note-IHC: suggested antigen retrieval with TE buffer pH 9.0; (*) Alternatively, antigen retrieval may be performed with citrate buffer pH 6.0

Positive Controls:

WB: MDCK cells, HEK-293 cells, MCF-7 cells

IHC: human kidney tissue, human breast cancer tissue

Background Information

KIF26B is a member of kinesin-11 family and plays important role in embryogenesis. It is a downstream target of Sall1 and is essential for kidney development. KIF26B is also involved in tumorigenesis.

Notable Publications

Author	Pubmed ID	Journal	Application
Yan Teng	30248545	Biomed Pharmacother	IHC, WB
Youguang Pu	27499703	Cancer Cell Int	WB

Storage

Storage:

Store at -20°C. Stable for one year after shipment.

Storage Buffer:

PBS with 0.02% sodium azide and 50% glycerol pH 7.3.

Aliquoting is unnecessary for -20°C storage

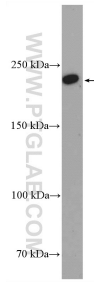
For technical support and original validation data for this product please contact:

T: 1 (888) 4PTGLAB (1-888-478-4522) (toll free in USA), or 1(312) 455-8498 (outside USA)

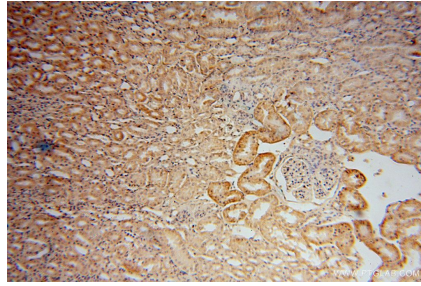
E: proteintech@ptglab.com
W: ptglab.com

This product is exclusively available under Proteintech Group brand and is not available to purchase from any other manufacturer.

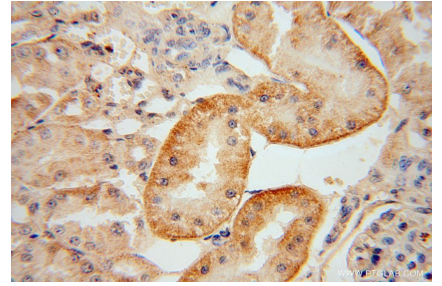
Selected Validation Data



MDCK cells were subjected to SDS PAGE followed by western blot with 17422-1-AP (KIF26B antibody) at dilution of 1:300 incubated at room temperature for 1.5 hours.



Immunohistochemical analysis of paraffin-embedded human kidney using 17422-1-AP (KIF26B antibody) at dilution of 1:50 (under 10x lens).



Immunohistochemical analysis of paraffin-embedded human kidney using 17422-1-AP (KIF26B antibody) at dilution of 1:50 (under 40x lens).