

For Research Use Only

MAGT1 Polyclonal antibody

Catalog Number: 17430-1-AP

Featured Product

13 Publications



Basic Information

Catalog Number:

17430-1-AP

Size:

150ul, Concentration: 260 µg/ml by Nanodrop and 213 µg/ml by Bradford method using BSA as the standard;

Source:

Rabbit

Isotype:

IgG

Immunogen Catalog Number:

AG11496

GenBank Accession Number:

BC060842

GeneID (NCBI):

84061

Full Name:

magnesium transporter 1

Calculated MW:

335 aa, 38 kDa

Observed MW:

45-47 kDa

Purification Method:

Antigen affinity purification

Recommended Dilutions:

WB 1:500-1:2000

IHC 1:20-1:200

IF 1:10-1:100

Applications

Tested Applications:

IF, IHC, WB, ELISA

Cited Applications:

IF, WB

Species Specificity:

human, mouse, rat

Cited Species:

human, rat

Note-IHC: suggested antigen retrieval with TE buffer pH 9.0; (*) Alternatively, antigen retrieval may be performed with citrate buffer pH 6.0

Positive Controls:

WB: mouse cerebellum tissue, mouse heart tissue, mouse colon tissue, COLO 320 cells, HEK-293 cells

IHC: human liver tissue, human colon cancer tissue, human skeletal muscle tissue, mouse brain tissue

IF: HepG2 cells,

Background Information

MAGT1 is a mammalian Mg²⁺-selective transporter being required for cellular magnesium uptake and vertebrate embryonic development. It possesses five putative transmembrane (TM) regions with a cleavage site, a N-glycosylation site, and a number of phosphorylation sites. Recently mutations in MAGT1 has been found to be associated with a novel X-linked human immunodeficiency. The MAGT1 protein was undetectable in the patients' cells by western blot or immunofluorescent cell surface staining. MAGT1 had been detected as 38 kDa (PMID: 18705540) or 45-47 kDa (PMID: 27383987) by western blot.

Notable Publications

Author	Pubmed ID	Journal	Application
Shenglin Zhu	31511384	J Virol	WB
Julie Brault	33051095	Cytotherapy	WB
Lin Lu	30849960	BMC Cancer	WB

Storage

Storage:

Store at -20°C. Stable for one year after shipment.

Storage Buffer:

PBS with 0.02% sodium azide and 50% glycerol pH 7.3.

Aliquoting is unnecessary for -20°C storage

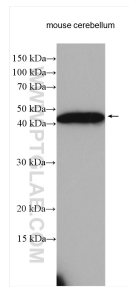
For technical support and original validation data for this product please contact:

T: 1 (888) 4PTGLAB (1-888-478-4522) (toll free in USA), or 1(312) 455-8498 (outside USA)

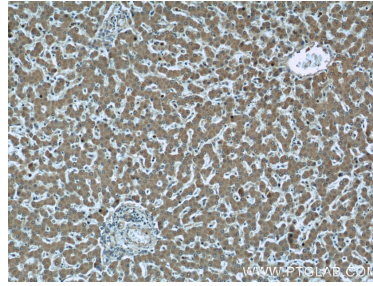
E: proteintech@ptglab.com
W: ptglab.com

This product is exclusively available under Proteintech Group brand and is not available to purchase from any other manufacturer.

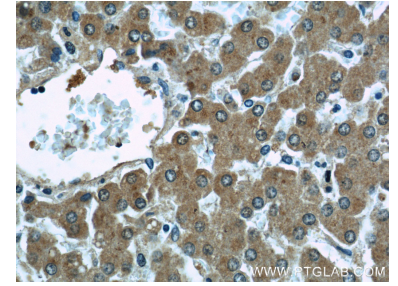
Selected Validation Data



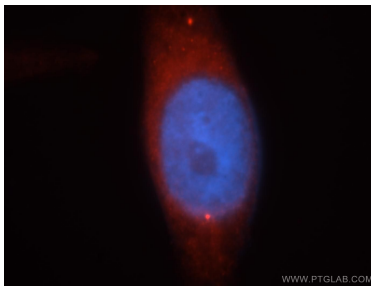
Mouse cerebellum lysates were subjected to SDS PAGE followed by western blot with 17430-1-AP (MAGT1 antibody) at dilution of 1:1000 incubated at room temperature for 1.5 hours.



Immunohistochemical analysis of paraffin-embedded human liver using 17430-1-AP (MAGT1 antibody) at dilution of 1:50 (under 10x lens).



Immunohistochemical analysis of paraffin-embedded human liver using 17430-1-AP (MAGT1 antibody) at dilution of 1:50 (under 40x lens).



Immunofluorescent analysis of HepG2 cells, using 17430-1-AP and Rhodamine-labeled goat anti-rabbit IgG (red). Blue pseudocolor = DAPI (fluorescent DNA dye).