

For Research Use Only

Leptin Polyclonal antibody

Catalog Number: 17436-1-AP

7 Publications



Basic Information

Catalog Number:

17436-1-AP

Size:

150ul, Concentration: 400 ug/ml by Nanodrop and 267 ug/ml by Bradford method using BSA as the standard;

Source:

Rabbit

Isotype:

IgG

Immunogen Catalog Number:

AG11507

GenBank Accession Number:

BC060830

GeneID (NCBI):

3952

UNIPROT ID:

P41159

Full Name:

leptin

Calculated MW:

167 aa, 19 kDa

Purification Method:

Antigen affinity purification

Recommended Dilutions:

IHC 1:200-1:800

IF/ICC 1:50-1:500

Applications

Tested Applications:

IHC, IF/ICC, ELISA

Cited Applications:

IHC

Species Specificity:

human, mouse

Cited Species:

human, mouse, goat

Note-IHC: suggested antigen retrieval with TE buffer pH 9.0; (*) Alternatively, antigen retrieval may be performed with citrate buffer pH 6.0

Positive Controls:

IHC : human stomach tissue, human liver tissue, human ovary tissue, human placenta tissue, human testis tissue, mouse ovary tissue, mouse brain tissue, human breast cancer tissue

IF/ICC : HeLa cells, NIH/3T3 cells

Background Information

Leptin is a protein that is secreted by white adipocytes, and which plays a major role in the regulation of body weight. Leptin is the most critical hormone in the homeostatic regulation of energy balance among those so far discovered. Leptin primarily acts on the neurons of the mediobasal part of hypothalamus to regulate food intake, thermogenesis, and the blood glucose level. Leptin also has several endocrine functions, and is involved in the regulation of immune and inflammatory responses, hematopoiesis, angiogenesis and wound healing. Mutations in this gene and/or its regulatory regions cause severe obesity, and morbid obesity with hypogonadism. Leptin has also been linked to type 2 diabetes mellitus development.

Notable Publications

Author	Pubmed ID	Journal	Application
Youyi Wang	34673376	Mol Immunol	
Paola Maroni	33213024	Biomedicines	IHC
Li Zheng	31828124	Biomed Res Int	IHC

Storage

Storage:

Store at -20°C. Stable for one year after shipment.

Storage Buffer:

PBS with 0.02% sodium azide and 50% glycerol, pH7.3

Aliquoting is unnecessary for -20°C storage

*** 20ul sizes contain 0.1% BSA

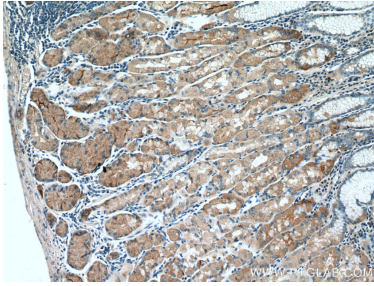
For technical support and original validation data for this product please contact:

T: 1 (888) 4PTGLAB (1-888-478-4522) (toll free in USA), or 1(312) 455-8498 (outside USA)

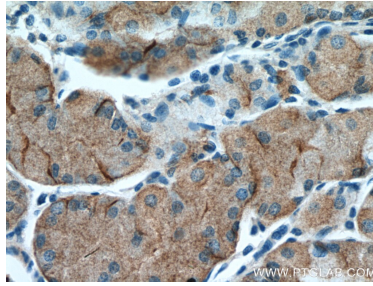
E: proteintech@ptglab.com
W: ptglab.com

This product is exclusively available under Proteintech Group brand and is not available to purchase from any other manufacturer.

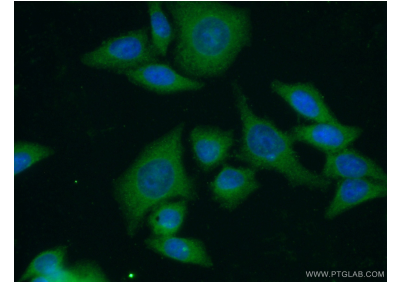
Selected Validation Data



Immunohistochemical analysis of paraffin-embedded human stomach tissue slide using 17436-1-AP (Leptin antibody) at dilution of 1:400 (under 10x lens).



Immunohistochemical analysis of paraffin-embedded human stomach tissue slide using 17436-1-AP (Leptin antibody) at dilution of 1:400 (under 40x lens).



Immunofluorescent analysis of (-20°C Ethanol) fixed HeLa cells using 17436-1-AP (Leptin antibody) at dilution of 1:50 and Alexa Fluor 488-conjugated Goat Anti-Rabbit IgG(H+L).