

For Research Use Only

# LCORL Polyclonal ANTIBODY

Catalog Number: 17468-1-AP



## Basic Information

**Catalog Number:**

17468-1-AP

**Size:**

150UL, Concentration: 267 µg/ml by Bradford method using BSA as the standard;

**Source:**

Rabbit

**Isotype:**

IgG

**Immunogen Catalog Number:**

AG11377

**GenBank Accession Number:**

BC037322

**GeneID (NCBI):**

254251

**Full Name:**

ligand dependent nuclear receptor corepressor-like

**Calculated MW:**

318 aa, 35 kDa, 67 kDa

**Observed MW:**

67 kDa

**Purification Method:**

Antigen affinity purification

**Recommended Dilutions:**

WB 1:500-1:2400

IHC 1:20-1:200

## Applications

**Tested Applications:**

IHC, WB, ELISA

**Species Specificity:**

human, mouse, rat

**Note-IHC: suggested antigen retrieval with TE buffer pH 9.0; (\*) Alternatively, antigen retrieval may be performed with citrate buffer pH 6.0**

**Positive Controls:**

WB: mouse testis tissue, PC-3 cells

IHC: human lung tissue,

## Background Information

### Storage

**Storage:**

Store at -20°C. Stable for one year after shipment.

**Storage Buffer:**

PBS with 0.02% sodium azide and 50% glycerol pH 7.3.

Aliquoting is unnecessary for -20°C storage

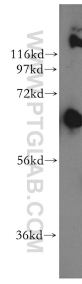
For technical support and original validation data for this product please contact:

T: 1 (888) 4PTGLAB (1-888-478-4522) (toll free in USA), or 1(312) 455-8498 (outside USA)

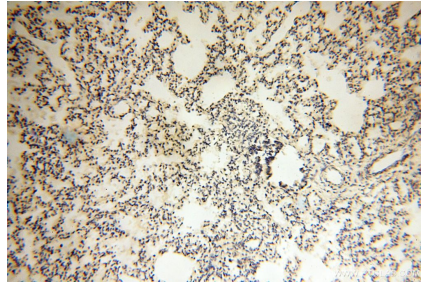
E: [proteintech@ptglab.com](mailto:proteintech@ptglab.com)  
W: [ptglab.com](http://ptglab.com)

**This product is exclusively available under Proteintech Group brand and is not available to purchase from any other manufacturer.**

## Selected Validation Data



mouse testis tissue were subjected to SDS PAGE followed by western blot with 17468-1-AP (LCORL antibody) at dilution of 1:500 incubated at room temperature for 1.5 hours.



Immunohistochemical analysis of paraffin-embedded human lung using 17468-1-AP (LCORL antibody) at dilution of 1:100 (under 10x lens).