

For Research Use Only

# IRS1 Polyclonal antibody

Catalog Number: 17509-1-AP **12 Publications**



## Basic Information

**Catalog Number:**

17509-1-AP

**Size:**

150UL, Concentration: 300 µg/ml by Bradford method using BSA as the standard;

**Source:**

Rabbit

**Isotype:**

IgG

**Immunogen Catalog Number:**

AG11714

**GenBank Accession Number:**

BC053895

**GeneID (NCBI):**

3667

**Full Name:**

insulin receptor substrate 1

**Calculated MW:**

1242 aa, 132 kDa

**Observed MW:**

160-185 kDa

**Purification Method:**

Antigen affinity purification

**Recommended Dilutions:**

WB 1:500-1:2000

IP 0.5-4.0 µg for IP and 1:500-1:2000 for WB

IHC 1:20-1:200

IF 1:20-1:200

## Applications

**Tested Applications:**

IF, IHC, IP, WB, ELISA

**Cited Applications:**

IF, IHC, WB

**Species Specificity:**

human

**Cited Species:**

blunt snout bream, human, mouse, pig, rat

**Note-IHC: suggested antigen retrieval with TE buffer pH 9.0; (\*) Alternatively, antigen retrieval may be performed with citrate buffer pH 6.0**

**Positive Controls:**

WB: A549 cells, A431 cells, HEK-293 cells, PC-3 cells

IP: A549 cells,

IHC: human breast cancer tissue, human liver tissue

IF: A549 cells,

## Background Information

Ins receptor substrate 1 (IRS1) was the first cloned and characterized member of the IRS family which are involved in ins receptor (IR) and ins-like growth factor I receptor (IGF-IR) signaling. IRS1 is phosphorylated by ins receptor tyrosine kinase and is involved in various cellular processes including DNA repair fidelity, transcriptional activity, and cell growth can support tumor development and progression. Mutations in this gene are associated with type II diabetes and susceptibility to ins resistance. IRS1 has a predicted molecular weight of 132 kDa, however, as a result of its extensive serine phosphorylation it separates on a SDS gel as a band of approximately 160-185 kDa.

## Notable Publications

Author	Pubmed ID	Journal	Application
Hui Zhang	32946868	Eur J Pharmacol	WB
Min Xu	30443192	Int J Biol Sci	WB
Lin Wang	31152816	Toxicol Appl Pharmacol	WB

## Storage

**Storage:**

Store at -20°C. Stable for one year after shipment.

**Storage Buffer:**

PBS with 0.02% sodium azide and 50% glycerol pH 7.3.

Aliquoting is unnecessary for -20°C storage

For technical support and original validation data for this product please contact:

T: 1 (888) 4PTGLAB (1-888-478-4522) (toll free in USA), or 1(312) 455-8498 (outside USA)

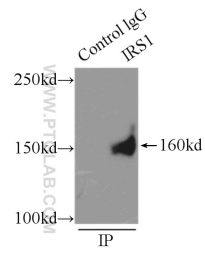
E: [proteintech@ptglab.com](mailto:proteintech@ptglab.com)  
W: [ptglab.com](http://ptglab.com)

**This product is exclusively available under Proteintech Group brand and is not available to purchase from any other manufacturer.**

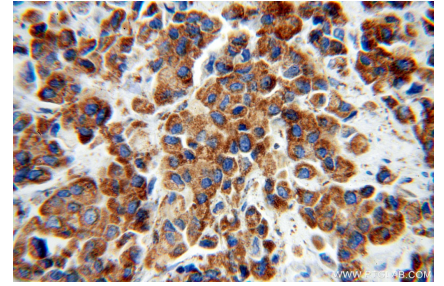
## Selected Validation Data



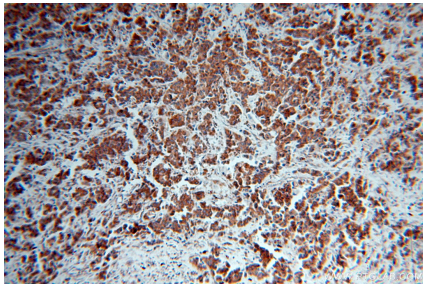
A549 cells were subjected to SDS PAGE followed by western blot with 17509-1-AP (IRS1 antibody) at dilution of 1:400 incubated at room temperature for 1.5 hours.



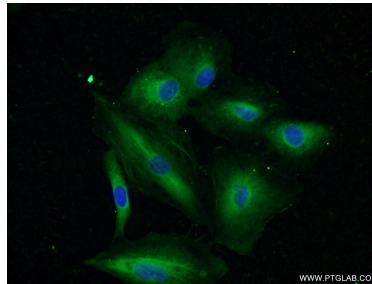
IP Result of anti-IRS1 (IP:17509-1-AP, 5ug; Detection:17509-1-AP 1:1000) with A549 cells lysate 3500ug.



Immunohistochemical analysis of paraffin-embedded human breast cancer using 17509-1-AP (IRS1 antibody) at dilution of 1:100 (under 40x lens).



Immunohistochemical analysis of paraffin-embedded human breast cancer using 17509-1-AP (IRS1 antibody) at dilution of 1:100 (under 10x lens).



Immunofluorescent analysis of A549 cells using 17509-1-AP (IRS1 antibody) at dilution of 1:50 and Alexa Fluor 488-conjugated AffiniPure Goat Anti-Rabbit IgG(H+L).