

For Research Use Only

# Somatostatin (64-81aa) Polyclonal antibody

Catalog Number: 17512-1-AP

7 Publications



## Basic Information

Catalog Number:

17512-1-AP

Size:

150ul, Concentration: 450 ug/ml by Nanodrop;

Source:

Rabbit

Isotype:

IgG

GenBank Accession Number:

NM\_001048

GeneID (NCBI):

6750

UNIPROT ID:

P61278

Full Name:

somatostatin

Calculated MW:

13 kDa

Purification Method:

Antigen affinity purification

Recommended Dilutions:

IHC: 1:6400-1:25600

IF-P: 1:50-1:500

## Applications

Tested Applications:

IHC, IF-P, ELISA

Cited Applications:

IHC, IF

Species Specificity:

human, mouse

Cited Species:

human, mouse, rat

**Note-IHC: suggested antigen retrieval with TE buffer pH 9.0; (\*) Alternatively, antigen retrieval may be performed with citrate buffer pH 6.0**

Positive Controls:

**IHC**: mouse pancreas tissue, human pancreas cancer tissue, mouse brain tissue, rat dorsal root ganglion tissue

**IF-P**: human pancreas tissue, mouse pancreas tissue, mouse brain tissue

## Background Information

Somatostatin is a peptide hormone that regulates the endocrine system and affects neurotransmission and cell proliferation via interaction with G protein-coupled somatostatin receptors and inhibition of the release of numerous secondary hormones. Somatostatin is a useful marker of D-cells of pancreatic islet cells. Somatostatin inhibits ins and glucagon secretion. Somatostatin has two active forms produced by alternative cleavage of a single preproprotein: one of 14 amino acids, the other of 28 amino acids. This antibody can recognize the full length and propeptide of Somatostatin.

## Notable Publications

Author	Pubmed ID	Journal	Application
Xiaoyi Zhang	34556631	Cell Death Dis	IF
Jingli Cao	33744924	G3 (Bethesda)	
Fei Han	31440379	Aging Dis	IF

## Storage

Storage:

Store at -20°C. Stable for one year after shipment.

Storage Buffer:

PBS with 0.02% sodium azide and 50% glycerol, pH7.3

Aliquoting is unnecessary for -20°C storage

\*\*\* 20ul sizes contain 0.1% BSA

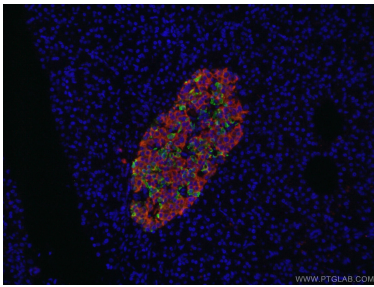
For technical support and original validation data for this product please contact:

T: 1 (888) 4PTGLAB (1-888-478-4522) (toll free in USA), or 1(312) 455-8498 (outside USA)

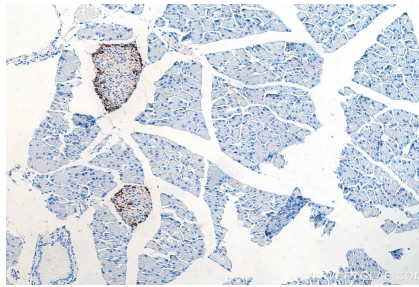
E: [proteintech@ptglab.com](mailto:proteintech@ptglab.com)  
W: [ptglab.com](http://ptglab.com)

This product is exclusively available under Proteintech Group brand and is not available to purchase from any other manufacturer.

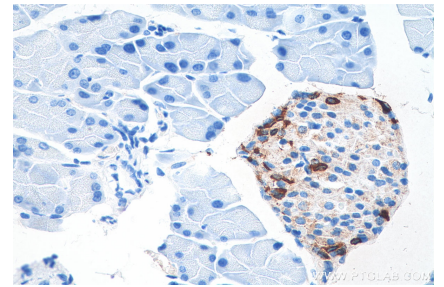
## Selected Validation Data



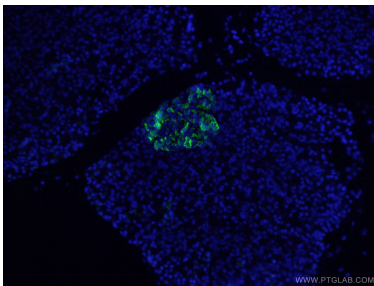
Immunofluorescent analysis of (4% PFA) fixed human pancreas tissue using 17512-1-AP Somatostatin-Specific antibody (green) and 66198-1-Ig Insulin antibody (red) at dilution of 1:50 and CoraLite488-Conjugated AffiniPure Goat Anti-Rabbit IgG(H+L).



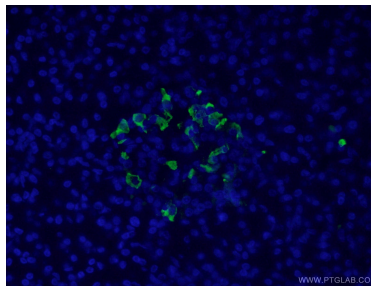
Immunohistochemical analysis of paraffin-embedded mouse pancreas tissue slide using 17512-1-AP (Somatostatin (64-81aa) antibody) at dilution of 1:12800 (under 10x lens). Heat mediated antigen retrieval with Tris-EDTA buffer (pH 9.0).



Immunohistochemical analysis of paraffin-embedded mouse pancreas tissue slide using 17512-1-AP (Somatostatin (64-81aa) antibody) at dilution of 1:12800 (under 40x lens). Heat mediated antigen retrieval with Tris-EDTA buffer (pH 9.0).



Immunofluorescent analysis of (4% PFA) fixed human pancreas tissue using 17512-1-AP (Somatostatin-Specific antibody) at dilution of 1:200 and Alexa Fluor 488-Conjugated AffiniPure Goat Anti-Rabbit IgG(H+L).



Immunofluorescent analysis of (4% PFA) fixed human pancreas tissue using 17512-1-AP (Somatostatin-Specific antibody) at dilution of 1:200 and Alexa Fluor 488-Conjugated AffiniPure Goat Anti-Rabbit IgG(H+L).