

For Research Use Only

# Inhibin beta A-Specific Polyclonal ANTIBODY



Catalog Number: 17524-1-AP

## Basic Information

**Catalog Number:**

17524-1-AP

**Size:**

150UL, Concentration: 133 µg/ml by Bradford method using BSA as the standard;

**Source:**

Rabbit

**Isotype:**

IgG

**GenBank Accession Number:**

NM\_002192

**GeneID (NCBI):**

3624

**Full Name:**

inhibin, beta A

**Calculated MW:**

47 kDa

**Observed MW:**

47 kDa

**Purification Method:**

Antigen affinity purification

**Recommended Dilutions:**

WB 1:500-1:1000

IP 0.5-4.0 µg for IP and 1:500-1:1000 for WB

## Applications

**Tested Applications:**

IP, WB, ELISA

**Species Specificity:**

human, mouse, rat

**Positive Controls:**

WB: mouse brain tissue, PC-3 cells, rat brain tissue

IP: rat brain tissue,

## Background Information

Inhibin  $\beta$ A (INHBA) is a ligand in the transforming growth factor  $\beta$  (TGF- $\beta$ ) superfamily. Inhibin  $\beta$ A forms a disulfide-linked homo-dimer known as activin A, which has been implicated in multiple biologic processes, including neoplastic progression. The inhibin  $\beta$ A can also bind the  $\beta$ B and  $\alpha$  isoforms to form activin AB and inhibin, respectively.

## Storage

**Storage:**

Store at -20°C. Stable for one year after shipment.

**Storage Buffer:**

PBS with 0.02% sodium azide and 50% glycerol pH 7.3.

Aliquoting is unnecessary for -20°C storage

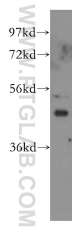
For technical support and original validation data for this product please contact:

T: 1 (888) 4PTGLAB (1-888-478-4522) (toll free in USA), or 1(312) 455-8498 (outside USA)

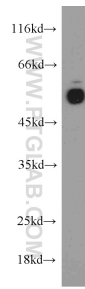
E: [proteintech@ptglab.com](mailto:proteintech@ptglab.com)  
W: [ptglab.com](http://ptglab.com)

This product is exclusively available under Proteintech Group brand and is not available to purchase from any other manufacturer.

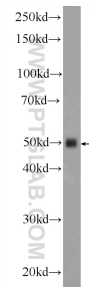
## Selected Validation Data



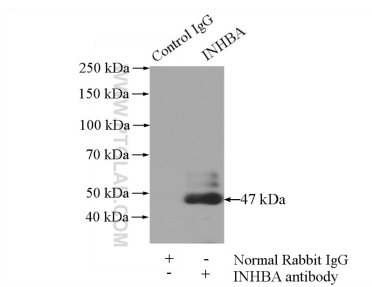
PC-3 cells were subjected to SDS PAGE followed by western blot with 17524-1-AP (Inhibin beta A-Specific antibody) at dilution of 1:300 incubated at room temperature for 1.5 hours.



rat brain tissue were subjected to SDS PAGE followed by western blot with 17524-1-AP (Inhibin beta A-Specific antibody) at dilution of 1:300 incubated at room temperature for 1.5 hours.



mouse brain tissue were subjected to SDS PAGE followed by western blot with 17524-1-AP (Inhibin beta A-Specific antibody) at dilution of 1:600 incubated at room temperature for 1.5 hours.



IP Result of anti-Inhibin beta A-Specific (IP:17524-1-AP, 4ug; Detection:17524-1-AP 1:500) with rat brain tissue lysate 4000ug.