

For Research Use Only

CTDSPL2 Polyclonal antibody

Catalog Number: 17532-1-AP

3 Publications



Basic Information

Catalog Number:

17532-1-AP

Size:

150ul, Concentration: 300 ug/ml by Nanodrop and 167 ug/ml by Bradford method using BSA as the standard;

Source:

Rabbit

Isotype:

IgG

Immunogen Catalog Number:

AG11581

GenBank Accession Number:

BC035744

GeneID (NCBI):

51496

UNIPROT ID:

Q05D32

Full Name:

CTD (carboxy-terminal domain, RNA polymerase II, polypeptide A) small phosphatase like 2

Calculated MW:

466 aa, 53 kDa

Observed MW:

67 kDa

Purification Method:

Antigen affinity purification

Recommended Dilutions:

WB 1:500-1:2400

IP 0.5-4.0 ug for 1.0-3.0 mg of total protein lysate

IHC 1:50-1:500

IF/ICC 1:50-1:500

Applications

Tested Applications:

WB, IHC, IF/ICC, IP, ELISA

Cited Applications:

WB, IHC, IP

Species Specificity:

human, mouse, rat

Cited Species:

human

Note-IHC: suggested antigen retrieval with TE buffer pH 9.0; (*) Alternatively, antigen retrieval may be performed with citrate buffer pH 6.0

Positive Controls:

WB: MCF7 cells, HeLa cells, HepG2 cells, human brain tissue, mouse eye tissue, mouse testis tissue, Y79 cells

IP: mouse testis tissue,

IHC: mouse testis tissue, human testis tissue

IF/ICC: HeLa cells,

Background Information

CTD small phosphatase-like protein 2 (CTDSPL2) is also named as HSPC058 and HSPC129, belongs to the CTDSPL2 family. It is a putative RNA-polymerase II carboxy-terminal domain (CTD) phosphatase, whose specific CTD phosphatase activity was verified in vitro, and may regulate the dynamic phosphorylation of RNAP II CTD. (PMID: 17487459) It can obviously improve the expression of ϵ - and γ -globin genes in K562 cells and CD34+ cells derived from UCB. (PMID: 20932329) This antibody is a rabbit polyclonal antibody raised against a region of human CTDSPL2.

Notable Publications

Author	Pubmed ID	Journal	Application
Ma Yan-Ni YN	20932329	BMC Cell Biol	WB
Jie Du	31907356	Cell Death Dis	WB
Muzi Li	39209829	Cell Death Discov	WB,IP,IHC

Storage

Storage:

Store at -20°C. Stable for one year after shipment.

Storage Buffer:

PBS with 0.02% sodium azide and 50% glycerol, pH7.3

Aliquoting is unnecessary for -20°C storage

*** 20ul sizes contain 0.1% BSA

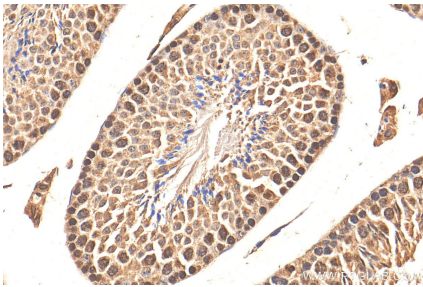
For technical support and original validation data for this product please contact:

T: 1 (888) 4PTGLAB (1-888-478-4522) (toll free in USA), or 1(312) 455-8498 (outside USA)

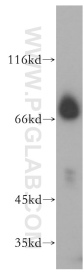
E: proteintech@ptglab.com
W: ptglab.com

This product is exclusively available under Proteintech Group brand and is not available to purchase from any other manufacturer.

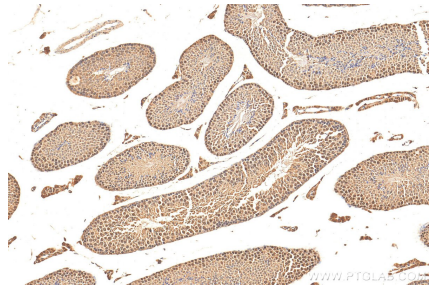
Selected Validation Data



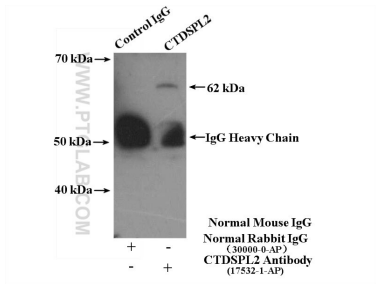
Immunohistochemical analysis of paraffin-embedded mouse testis tissue slide using 17532-1-AP (CTDSPL2 antibody) at dilution of 1:200 (under 40x lens). Heat mediated antigen retrieval with Tris-EDTA buffer (pH 9.0).



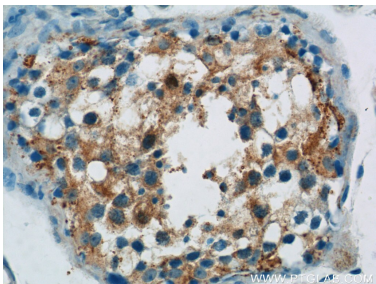
MCF7 cells were subjected to SDS PAGE followed by western blot with 17532-1-AP (CTDSPL2 antibody) at dilution of 1:500 incubated at room temperature for 1.5 hours.



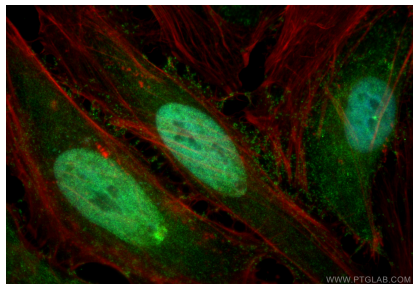
Immunohistochemical analysis of paraffin-embedded mouse testis tissue slide using 17532-1-AP (CTDSPL2 antibody) at dilution of 1:200 (under 10x lens). Heat mediated antigen retrieval with Tris-EDTA buffer (pH 9.0).



IP result of anti-CTDSPL2 (IP:17532-1-AP, 4ug; Detection:17532-1-AP 1:500) with mouse testis tissue lysate 4400ug.



Immunohistochemical analysis of paraffin-embedded human testis tissue slide using 17532-1-AP (CTDSPL2 Antibody) at dilution of 1:50 (under 40x lens).



Immunofluorescent analysis of (4% PFA) fixed HeLa cells using CTDSPL2 antibody (17532-1-AP) at dilution of 1:200 and Multi-rAb CoraLite ® Plus 488-Goat Anti-Rabbit Recombinant Secondary Antibody (H+L) (RGAR002), CL594-phalloidin (red).