

For Research Use Only

SHOC2/Sur-8 Polyclonal antibody

Catalog Number: 17561-1-AP

Featured Product

8 Publications



Basic Information

Catalog Number:

17561-1-AP

Size:

150ul, Concentration: 650 ug/ml by Nanodrop;

Source:

Rabbit

Isotype:

IgG

Immunogen Catalog Number:

AG11754

GenBank Accession Number:

BC050445

GeneID (NCBI):

8036

UNIPROT ID:

Q9UQ13

Full Name:

soc-2 suppressor of clear homolog (C. elegans)

Calculated MW:

582 aa, 65 kDa

Observed MW:

65 kDa

Purification Method:

Antigen affinity purification

Recommended Dilutions:

WB 1:1000-1:4000

IHC 1:50-1:500

IF/ICC 1:50-1:500

Applications

Tested Applications:

WB, IHC, IF/ICC, ELISA

Cited Applications:

WB, IHC, IP

Species Specificity:

human, mouse, rat

Cited Species:

human, mouse, monkey

Note-IHC: suggested antigen retrieval with TE buffer pH 9.0; (*) Alternatively, antigen retrieval may be performed with citrate buffer pH 6.0

Positive Controls:

WB : MCF-7 cells, Jurkat cells, mouse brain tissue, rat testis tissue, U-251 cells

IHC : human renal cell carcinoma tissue, human kidney tissue, mouse brain tissue, mouse kidney tissue

IF/ICC : HeLa cells, MCF-7 cells

Background Information

SHOC2 is also named as Sur-8. The SHOC2 protein, along with MRAS and PP1C, forms a high affinity, heterotrimeric holoenzyme that activates RAF kinases by dephosphorylating a specific phosphoserine (PMID: 37074066). SHOC2, a key protein mediating the Ras-Raf-ERK pathway, could act as a scaffolding protein to facilitate the activation of the pathway by mediating the interaction of key components of the pathway (PMID: 37170083). The scaffold protein Shoc2 is a critical modulator of ERK1/2 signals, and mutations in the shoc2 gene lead to the human developmental disease known as Noonan-like syndrome with loose anagen hair (NSLH) (PMID: 36265687).

Notable Publications

Author	Pubmed ID	Journal	Application
Eun Ryoung Jang	26519477	J Cell Sci	WB,IP
Hideki Terai	33106373	Mol Cancer Res	IHC
Eun Ryoung Jang	25022756	Mol Cell Biol	WB,IP

Storage

Storage:

Store at -20°C. Stable for one year after shipment.

Storage Buffer:

PBS with 0.02% sodium azide and 50% glycerol, pH7.3

Aliquoting is unnecessary for -20°C storage

*** 20ul sizes contain 0.1% BSA

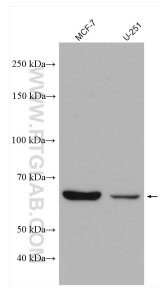
For technical support and original validation data for this product please contact:

T: 1 (888) 4PTGLAB (1-888-478-4522) (toll free in USA), or 1(312) 455-8498 (outside USA)

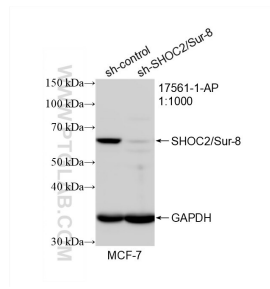
E: proteintech@ptglab.com
W: ptglab.com

This product is exclusively available under Proteintech Group brand and is not available to purchase from any other manufacturer.

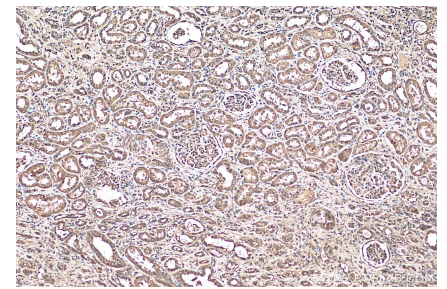
Selected Validation Data



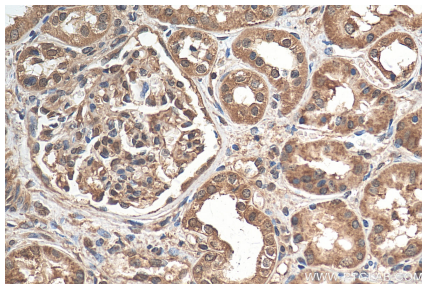
Various lysates were subjected to SDS PAGE followed by western blot with 17561-1-AP (Sur-8 antibody) at dilution of 1:2000 incubated at room temperature for 1.5 hours.



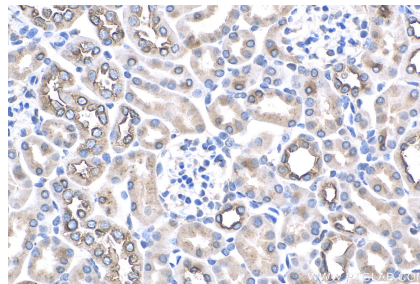
WB result of SHOC2/Sur-8 antibody (17561-1-AP; 1:1000; incubated at room temperature for 1.5 hours) with sh-Control and sh-SHOC2/Sur-8 transfected MCF-7 cells.



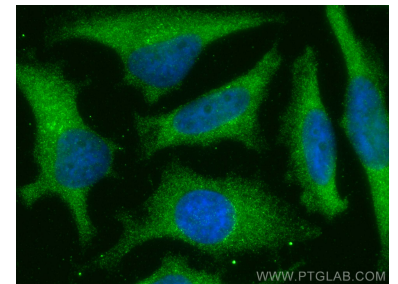
Immunohistochemical analysis of paraffin-embedded human renal cell carcinoma tissue slide using 17561-1-AP (Sur-8 antibody) at dilution of 1:200 (under 10x lens). Heat mediated antigen retrieval with Tris-EDTA buffer (pH 9.0).



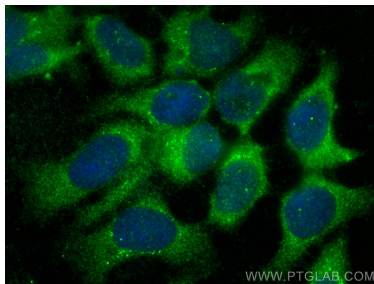
Immunohistochemical analysis of paraffin-embedded human renal cell carcinoma tissue slide using 17561-1-AP (Sur-8 antibody) at dilution of 1:200 (under 40x lens). Heat mediated antigen retrieval with Tris-EDTA buffer (pH 9.0).



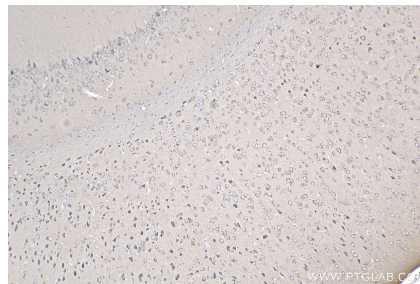
Immunohistochemical analysis of paraffin-embedded mouse kidney tissue slide using 17561-1-AP (Sur-8 antibody) at dilution of 1:200 (under 40x lens). Heat mediated antigen retrieval with Tris-EDTA buffer (pH 9.0).



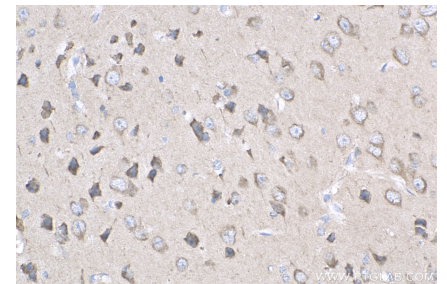
Immunofluorescent analysis of (-20°C Methanol) fixed HeLa cells using Sur-8 antibody (17561-1-AP) at dilution of 1:200 and CoraLite®488-Conjugated AffiniPure Goat Anti-Rabbit IgG(H+L).



Immunofluorescent analysis of (-20°C Methanol) fixed MCF-7 cells using Sur-8 antibody (17561-1-AP) at dilution of 1:200 and CoraLite®488-Conjugated AffiniPure Goat Anti-Rabbit IgG(H+L).



Immunohistochemical analysis of paraffin-embedded mouse brain tissue slide using 17561-1-AP (Sur-8 antibody) at dilution of 1:200 (under 10x lens). Heat mediated antigen retrieval with Tris-EDTA buffer (pH 9.0).



Immunohistochemical analysis of paraffin-embedded mouse brain tissue slide using 17561-1-AP (Sur-8 antibody) at dilution of 1:200 (under 40x lens). Heat mediated antigen retrieval with Tris-EDTA buffer (pH 9.0).