

For Research Use Only

# KLC2 Polyclonal antibody

Catalog Number: 17668-1-AP

5 Publications



## Basic Information

### Catalog Number:

17668-1-AP

### Size:

150ul, Concentration: 900 ug/ml by Nanodrop and 433 ug/ml by Bradford method using BSA as the standard;

### Source:

Rabbit

### Isotype:

IgG

### Immunogen Catalog Number:

AG11158

### GenBank Accession Number:

BC034373

### GeneID (NCBI):

64837

### UNIPROT ID:

Q9H0B6

### Full Name:

kinesin light chain 2

### Calculated MW:

622 aa, 69 kDa

### Observed MW:

67 kDa

### Purification Method:

Antigen affinity purification

### Recommended Dilutions:

WB: 1:1000-1:4000

IP: 0.5-4.0 ug for 1.0-3.0 mg of total protein lysate

IHC: 1:20-1:200

## Applications

### Tested Applications:

WB, IP, IHC, ELISA

### Cited Applications:

WB, IHC

### Species Specificity:

human, mouse, rat

### Cited Species:

human, mouse, rat

**Note-IHC: suggested antigen retrieval with TE buffer pH 9.0; (\*) Alternatively, antigen retrieval may be performed with citrate buffer pH 6.0**

### Positive Controls:

WB : mouse testis tissue, mouse lung tissue

IP : mouse testis tissue,

IHC : human brain tissue,

## Notable Publications

Author	Pubmed ID	Journal	Application
Xiaolong Fu	34014435	Mol Neurobiol	WB
Amélie Robert	29944446	FASEB J	WB
M Wang	25668010	Br J Cancer	WB, IHC

## Storage

### Storage:

Store at -20°C. Stable for one year after shipment.

### Storage Buffer:

PBS with 0.02% sodium azide and 50% glycerol, pH7.3

Aliquoting is unnecessary for -20°C storage

\*\*\* 20ul sizes contain 0.1% BSA

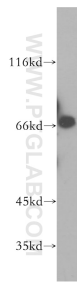
For technical support and original validation data for this product please contact:

T: 1 (888) 4PTGLAB (1-888-478-4522) (toll free in USA), or 1(312) 455-8498 (outside USA)

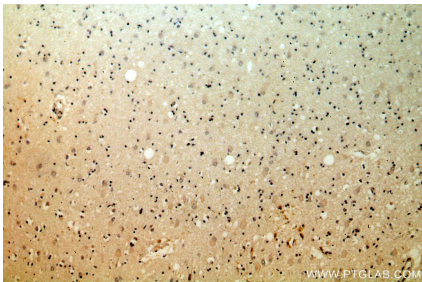
E: [proteintech@ptglab.com](mailto:proteintech@ptglab.com)  
W: [ptglab.com](http://ptglab.com)

This product is exclusively available under Proteintech Group brand and is not available to purchase from any other manufacturer.

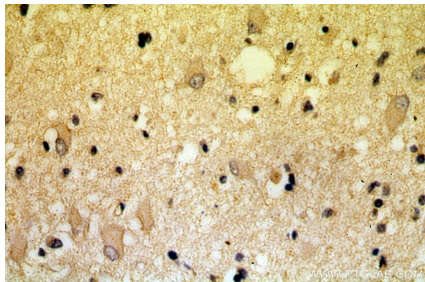
Selected Validation Data



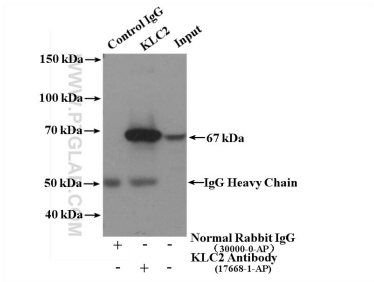
mouse testis tissue were subjected to SDS PAGE followed by western blot with 17668-1-AP (KLC2 antibody) at dilution of 1:800 incubated at room temperature for 1.5 hours.



Immunohistochemical analysis of paraffin-embedded human brain using 17668-1-AP (KLC2 antibody) at dilution of 1:100 (under 10x lens).



Immunohistochemical analysis of paraffin-embedded human brain using 17668-1-AP (KLC2 antibody) at dilution of 1:100 (under 40x lens).



IP result of anti-KLC2 (IP:17668-1-AP, 4ug; Detection:17668-1-AP 1:800) with mouse testis tissue lysate 4400ug.