

For Research Use Only

# ARL13B Polyclonal antibody

Catalog Number: 17711-1-AP

Featured Product

848 Publications



## Basic Information

### Catalog Number:

17711-1-AP

### Size:

150ul, Concentration: 900 ug/ml by Nanodrop;

### Source:

Rabbit

### Isotype:

IgG

### Immunogen Catalog Number:

AG12015

### GenBank Accession Number:

BC094725

### GeneID (NCBI):

200894

### UNIPROT ID:

Q3SKY8

### Full Name:

ADP-ribosylation factor-like 13B

### Calculated MW:

48 kDa

### Observed MW:

40-48 kDa, 60 kDa

### Purification Method:

Antigen affinity purification

### Recommended Dilutions:

WB: 1:1000-1:6000

IP: 0.5-4.0 ug for 1.0-3.0 mg of total protein lysate

IHC: 1:50-1:500

IF/ICC: 1:200-1:800

## Applications

### Tested Applications:

WB, IHC, IF/ICC, IP, ELISA

### Cited Applications:

WB, IHC, IF, IP

### Species Specificity:

human, mouse, rat, canine

### Cited Species:

human, mouse, rat, pig, canine, monkey, chicken, zebrafish, sheep, xenopus

**Note-IHC: suggested antigen retrieval with TE buffer pH 9.0; (\*) Alternatively, antigen retrieval may be performed with citrate buffer pH 6.0**

### Positive Controls:

**WB:** L02 cells, mouse brain tissue, mouse kidney tissue, mouse liver tissue, NIH/3T3 cells, rat liver tissue, rat kidney tissue

**IP:** L02 cells,

**IHC:** mouse brain tissue, human kidney tissue, human liver tissue, human testis tissue

**IF/ICC:** hTERT-RPE1 cells, NIH3T3 cells, MDCK cells

## Background Information

ARL13B, also named ARL2L1, is the Ras superfamily's small ciliary G protein. Localized in the cilia, it is required for cilium biogenesis and sonic hedgehog signaling. Defects in ARL13B cause Joubert syndrome (JS), an autosomal recessive disorder characterized by a distinctive cerebellar malformation (PMID: 19906870). This antibody detects two specific bands at 60 kDa and 48 kDa. ARL13b is predicted to be a 48 kDa protein, and the 60 kDa band will likely represent a modified form of ARL13b. ARL13B can be used to mark the cilia (PMID: 22072986).

## Notable Publications

Author	Pubmed ID	Journal	Application
Yi Chung Lim	26430510	Cilia	IF
Silvia Pietrobono	34638386	Cancers (Basel)	IF
Mandy Lokaj	26455799	Structure	IF

## Storage

### Storage:

Store at -20°C. Stable for one year after shipment.

### Storage Buffer:

PBS with 0.02% sodium azide and 50% glycerol, pH7.3

Aliquoting is unnecessary for -20°C storage

\*\*\* 20ul sizes contain 0.1% BSA

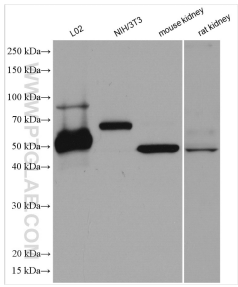
For technical support and original validation data for this product please contact:

T: 1 (888) 4PTGLAB (1-888-478-4522) (toll free in USA), or 1(312) 455-8498 (outside USA)

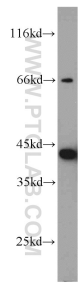
E: [proteintech@ptglab.com](mailto:proteintech@ptglab.com)  
W: [ptglab.com](http://ptglab.com)

This product is exclusively available under Proteintech Group brand and is not available to purchase from any other manufacturer.

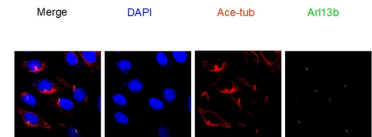
Selected Validation Data



Various lysates were subjected to SDS PAGE followed by western blot with 17711-1-AP (ARL13B antibody) at dilution of 1:3000 incubated at room temperature for 1.5 hours.

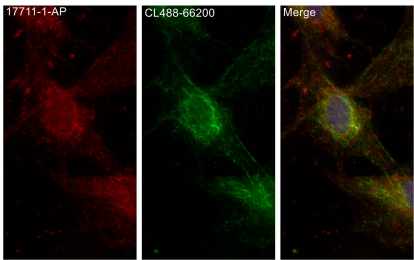


mouse liver tissue were subjected to SDS PAGE followed by western blot with 17711-1-AP (ARL13B antibody) at dilution of 1:1000 incubated at room temperature for 1.5 hours.

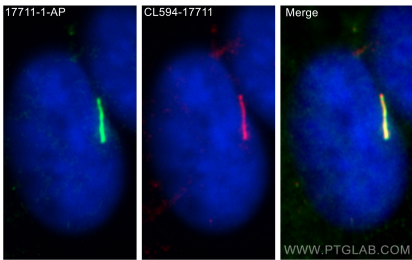


NIH3T3 cell line, 1:500

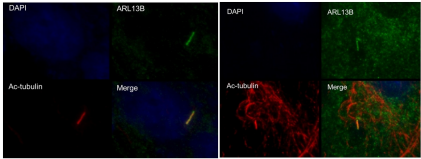
IF result of anti-ARL13B (17711-1-AP) in NIH3T3 cell by Dr. Sudipto.



Immunofluorescent analysis of (4% PFA) fixed MDCK cells using ARL13B antibody (17711-1-AP) at dilution of 1:200 and CoraLite® 594-Conjugated AffiniPure Goat Anti-Rabbit IgG(H+L).

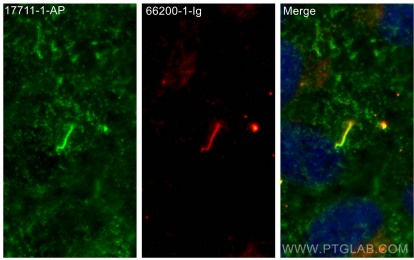


Immunofluorescent analysis of (4% PFA) fixed hTERT-RPE1 cells using ARL13B antibody (17711-1-AP) at dilution of 1:400 and Multi-rAb CoraLite® Plus 488-Goat Anti-Rabbit Recombinant Secondary Antibody (H+L) (RGAR002).

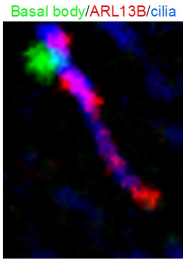


Fixed with 4%PFA 10min,0.1%TX-100 (in PBS) 5min

IF result of ARL13B antibody (17711-1-AP) in hTERT-RPE cell fixed with 4% PFA or Methanol.

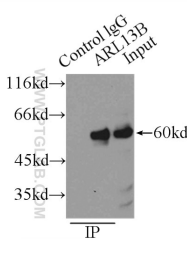


Immunofluorescent analysis of (4% PFA) fixed hTERT-RPE1 cells using ARL13B antibody (17711-1-AP) at dilution of 1:400 and CoraLite® 488-Conjugated AffiniPure Goat Anti-Rabbit IgG(H+L), acetylated Tubulin(Lys40) antibody (66200-1-Ig, Clone: 7E5H8, red).

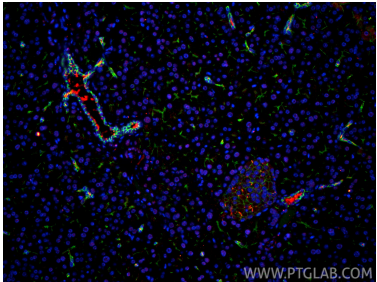
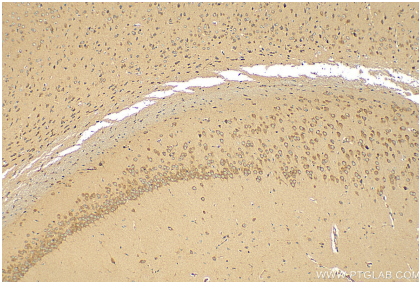
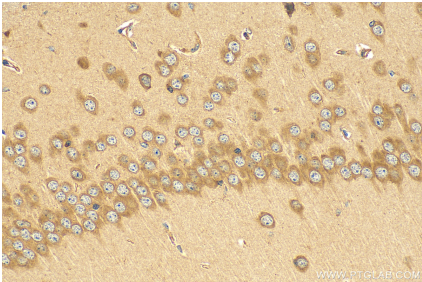


Mouse embryonic fibroblasts

IF result from Dr. Corbit, Kevin. anti-ARL13B (17711-1-AP) mark the cilium of Mouse embryonic fibroblasts.



IP result of anti-ARL13B (IP:17711-1-AP, 3ug; Detection:17711-1-AP 1:1000) with L02 cells lysate 2500ug.



Immunohistochemical analysis of paraffin-embedded mouse brain tissue slide using 17711-1-AP (ARL13B antibody) at dilution of 1:200 (under 40x lens). Heat mediated antigen retrieval with Tris-EDTA buffer (pH 9.0).

Immunohistochemical analysis of paraffin-embedded mouse brain tissue slide using 17711-1-AP (ARL13B antibody) at dilution of 1:200 (under 10x lens). Heat mediated antigen retrieval with Tris-EDTA buffer (pH 9.0).

Immunofluorescent analysis of (4% PFA) fixed paraffin-embedded mouse pancreas tissue using ARL13B antibody (17711-1-AP) at dilution of 1:400 and CoraLite® 594-Conjugated Goat Anti-Rabbit IgG(H+L) (SA00013-4), CoraLite® Plus 488 E-cadherin antibody (CL488-20874, green). Heat mediated antigen retrieval with Tris-EDTA buffer (pH 9.0).