

For Research Use Only

MYO1E Polyclonal antibody

Catalog Number: 17768-1-AP

Featured Product

5 Publications



Basic Information

Catalog Number:

17768-1-AP

Size:

150ul, Concentration: 450 ug/ml by Nanodrop;

Source:

Rabbit

Isotype:

IgG

Immunogen Catalog Number:

AG12176

GenBank Accession Number:

BC098392

GeneID (NCBI):

4643

UNIPROT ID:

Q12965

Full Name:

myosin IE

Calculated MW:

1108 aa, 127 kDa

Observed MW:

127 kDa

Purification Method:

Antigen affinity purification

Recommended Dilutions:

WB: 1:500-1:2000

IHC: 1:50-1:500

Applications

Tested Applications:

WB, IHC, ELISA

Cited Applications:

WB, IF

Species Specificity:

human, mouse, rat

Cited Species:

human, mouse

Note-IHC: suggested antigen retrieval with TE buffer pH 9.0; (*) Alternatively, antigen retrieval may be performed with citrate buffer pH 6.0

Positive Controls:

WB: HT-1080 cells, HeLa cells, Jurkat cells

IHC: human lung cancer tissue,

Background Information

MYO1E, also named as Myosin-Ie and MYO1C (distinct from the MYO1C gene located on chromosome 17), encodes a member of the nonmuscle class I myosins which are a subgroup of the unconventional myosin protein family. The unconventional myosin proteins function as actin-based molecular motors. This protein localizes to the cytoplasm and may be involved in intracellular movement and membrane trafficking. Mutations in this gene are the cause of focal segmental glomerulosclerosis-6.

Notable Publications

Author	Pubmed ID	Journal	Application
Jens Wenzel	25263281	Eur J Immunol	WB
Mio Iwasaki	35573189	iScience	
Jiale Liu	40064361	Exp Neurol	WB

Storage

Storage:

Store at -20°C. Stable for one year after shipment.

Storage Buffer:

PBS with 0.02% sodium azide and 50% glycerol, pH7.3

Aliquoting is unnecessary for -20°C storage

*** 20ul sizes contain 0.1% BSA

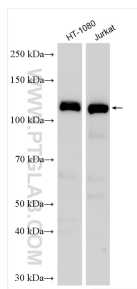
For technical support and original validation data for this product please contact:

T: 1 (888) 4PTGLAB (1-888-478-4522) (toll free in USA), or 1(312) 455-8498 (outside USA)

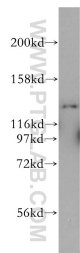
E: proteintech@ptglab.com
W: ptglab.com

This product is exclusively available under Proteintech Group brand and is not available to purchase from any other manufacturer.

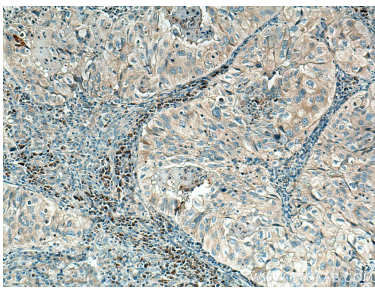
Selected Validation Data



Various lysates were subjected to SDS PAGE followed by western blot with 17768-1-AP (MYO1E antibody) at dilution of 1:1000 incubated at room temperature for 1.5 hours.



HeLa cells were subjected to SDS PAGE followed by western blot with 17768-1-AP (MYO1E antibody) at dilution of 1:500 incubated at room temperature for 1.5 hours.



Immunohistochemical analysis of paraffin-embedded human lung cancer tissue slide using 17768-1-AP (MYO1E antibody) at dilution of 1:200 (under 10x lens). Heat mediated antigen retrieval with Tris-EDTA buffer (pH 9.0).