

For Research Use Only

ANT1/2 Polyclonal antibody

Catalog Number: 17796-1-AP

14 Publications



Basic Information

Catalog Number:

17796-1-AP

Size:

150ul, Concentration: 750 ug/ml by Nanodrop;

Source:

Rabbit

Isotype:

IgG

Immunogen Catalog Number:

AG11956

GenBank Accession Number:

BC056160

GeneID (NCBI):

292

UNIPROT ID:

P05141

Full Name:

solute carrier family 25 (mitochondrial carrier; adenine nucleotide translocator), member 5

Calculated MW:

298 aa, 33 kDa

Observed MW:

30-32 kDa, 60 kDa

Purification Method:

Antigen affinity purification

Recommended Dilutions:

WB 1:1000-1:6000

IHC 1:250-1:1000

Applications

Tested Applications:

WB, IHC, ELISA

Cited Applications:

WB, IHC

Species Specificity:

human, mouse, rat

Cited Species:

human, mouse, rat

Note-IHC: suggested antigen retrieval with TE buffer pH 9.0; (*) Alternatively, antigen retrieval may be performed with citrate buffer pH 6.0

Positive Controls:

WB : K-562 cells, HepG2 cells, mouse brain tissue, mouse heart tissue, mouse liver tissue, mouse kidney tissue, rat brain tissue, rat heart tissue, rat liver tissue

IHC : human liver tissue, human liver cancer tissue, mouse heart tissue, mouse kidney tissue, human cervical cancer tissue, human stomach cancer tissue

Background Information

Adenine nucleotide translocators (ANTs) are mitochondrial carrier proteins that exchange ATP and ADP between the cytoplasm and the mitochondrial matrix. Four isoforms of ANT were identified: ANT1 (encoded by SLC25A4) is highly expressed in different tissues; ANT2 (encoded by SLC25A5) is predominantly expressed in proliferating, regenerating, or undifferentiated cells; ANT3 is ubiquitously expressed; ANT4 is mainly expressed in testis and germ cells. This antibody recognizes both of ANT1 and ANT2. The predicted molecular weight of ANT1/2 protein is around 32 kDa. While 60 kDa protein can also be observed, which has been proposed as the dimer of ANT1/2. (22423112)

Notable Publications

Author	Pubmed ID	Journal	Application
Chul-Hee Lee	30225759	Mol Imaging Biol	IHC
Kathleen C Lundberg	25351201	Mol Cell Proteomics	IHC
Kai Sun	36253777	World J Surg Oncol	IHC

Storage

Storage:

Store at -20°C. Stable for one year after shipment.

Storage Buffer:

PBS with 0.02% sodium azide and 50% glycerol pH 7.3.

Aliquoting is unnecessary for -20°C storage

*** 20ul sizes contain 0.1% BSA

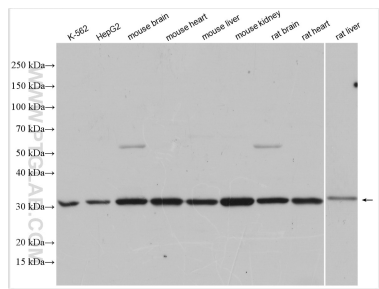
For technical support and original validation data for this product please contact:

T: 1 (888) 4PTGLAB (1-888-478-4522) (toll free in USA), or 1(312) 455-8498 (outside USA)

E: proteintech@ptglab.com
W: ptglab.com

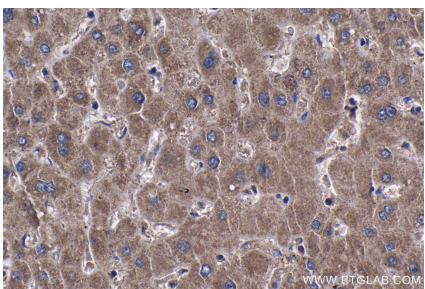
This product is exclusively available under Proteintech Group brand and is not available to purchase from any other manufacturer.

Selected Validation Data



Various lysates were subjected to SDS PAGE followed by western blot with 17796-1-AP (ANT1/2 antibody) at dilution of 1:3000 incubated at room temperature for 1.5 hours.

Immunohistochemical analysis of paraffin-embedded human liver tissue slide using 17796-1-AP (ANT1/2 antibody) at dilution of 1:500 (under 10x lens). Heat mediated antigen retrieval with Tris-EDTA buffer (pH 9.0).



Immunohistochemical analysis of paraffin-embedded human liver tissue slide using 17796-1-AP (ANT1/2 antibody) at dilution of 1:500 (under 40x lens). Heat mediated antigen retrieval with Tris-EDTA buffer (pH 9.0).