

For Research Use Only

# BHLHE40 Polyclonal antibody

Catalog Number: 17895-1-AP

1 Publications



## Basic Information

**Catalog Number:**

17895-1-AP

**Size:**

150UL, Concentration: 750 µg/ml by Nanodrop and 347 µg/ml by Bradford method using BSA as the standard;

**Source:**

Rabbit

**Isotype:**

IgG

**Immunogen Catalog Number:**

AG12236

**GenBank Accession Number:**

BC082238

**GeneID (NCBI):**

8553

**Full Name:**

basic helix-loop-helix family, member e40

**Calculated MW:**

412 aa, 46 kDa

**Observed MW:**

46-50 kDa

**Purification Method:**

Antigen affinity purification

**Recommended Dilutions:**

WB 1:500-1:1000

IP 0.5-4.0 µg for IP and 1:500-1:1000 for WB

## Applications

**Tested Applications:**

IP, WB, ELISA

**Cited Applications:**

WB

**Species Specificity:**

human, mouse, rat

**Cited Species:**

human

**Positive Controls:**

WB : SGC-7901 cells,

IP : SGC-7901 cells,

## Background Information

## Notable Publications

Author	Pubmed ID	Journal	Application
Xiaomeng Shen	30100061	Biochem Biophys Res Commun	WB

## Storage

**Storage:**

Store at -20°C. Stable for one year after shipment.

**Storage Buffer:**

PBS with 0.02% sodium azide and 50% glycerol pH 7.3.

Aliquoting is unnecessary for -20°C storage

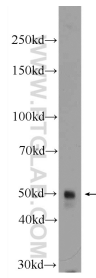
For technical support and original validation data for this product please contact:

T: 1 (888) 4PTGLAB (1-888-478-4522) (toll free in USA), or 1(312) 455-8498 (outside USA)

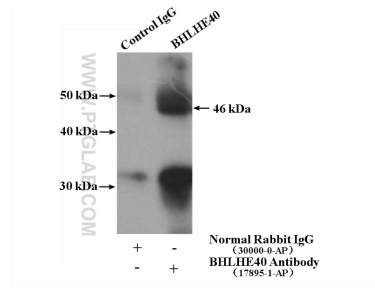
E: [proteintech@ptglab.com](mailto:proteintech@ptglab.com)  
W: [ptglab.com](http://ptglab.com)

This product is exclusively available under Proteintech Group brand and is not available to purchase from any other manufacturer.

## Selected Validation Data



SGC-7901 cells were subjected to SDS PAGE followed by western blot with 17895-1-AP (BHLHE40 Antibody) at dilution of 1:600 incubated at room temperature for 1.5 hours.



IP Result of anti-BHLHE40 (IP:17895-1-AP, 4ug; Detection:17895-1-AP 1:600) with SGC-7901 cells lysate 2200ug.