

For Research Use Only

RPE65 Polyclonal ANTIBODY



Catalog Number: 17939-1-AP **4 Publications**

Basic Information

Catalog Number: 17939-1-AP	GenBank Accession Number: BC075036	Purification Method: Antigen affinity purification
Size: 150UL, Concentration: 187 µg/ml by Bradford method using BSA as the standard;	GeneID (NCBI): 6121	Recommended Dilutions: WB 1:500-1:3000
Source: Rabbit	Full Name: retinal pigment epithelium-specific protein 65kDa	
Isotype: IgG	Calculated MW: 533 aa, 61 kDa	
Immunogen Catalog Number: AG12356	Observed MW: 65 kDa, 61 kDa	

Applications

Tested Applications: WB, ELISA	Positive Controls: WB: Y79 cells, HeLa cells, mouse eye tissue, PC-3 cells
Cited Applications: WB	
Species Specificity: human, mouse, rat	
Cited Species: human, rat	

Background Information

RPE65(Retinal pigment epithelium-specific 65 kDa protein) is also named as retinoid isomerohydrolase with the calculated molecular weight of 61 kDa and belongs to the carotenoid oxygenase family. It is a microsomal protein with isomerase activity in the retinoid visual cycle that playing a role in the isomerisation of all-trans (vitamin A) to 11-cis retinal, the chromophore of the visual pigments. It also might be involved in retinoid uptake of keratinocytes.

Notable Publications

Author	Pubmed ID	Journal	Application
Jianing Gu	31075513	Acta Biomater	WB
Zhan Gao	30049796	J Biol Chem	WB
Volha V Malechka	28734946	Am J Pathol	WB

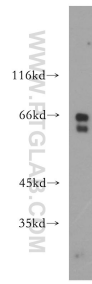
Storage

Storage:
Store at -20°C. Stable for one year after shipment.
Storage Buffer:
PBS with 0.02% sodium azide and 50% glycerol pH 7.3.
Aliquoting is unnecessary for -20°C storage

For technical support and original validation data for this product please contact:
T: 1 (888) 4PTGLAB (1-888-478-4522) (toll free in USA), or 1(312) 455-8498 (outside USA)
E: proteintech@ptglab.com
W: ptglab.com

This product is exclusively available under Proteintech Group brand and is not available to purchase from any other manufacturer.

Selected Validation Data



Y79 cells were subjected to SDS PAGE followed by western blot with 17939-1-AP (RPE65 antibody) at dilution of 1:600 incubated at room temperature for 1.5 hours.