

For Research Use Only

RGN/SMP30 Polyclonal antibody

Catalog Number: 17947-1-AP **7 Publications**



Basic Information

Catalog Number: 17947-1-AP	GenBank Accession Number: BC073173	Purification Method: Antigen affinity purification
Size: 150ul , Concentration: 400 µg/ml by Nanodrop and 267 µg/ml by Bradford method using BSA as the standard;	GeneID (NCBI): 9104	Recommended Dilutions: WB 1:3000-1:10000 IP 0.5-4.0 ug for IP and 1:500-1:2000 for WB
Source: Rabbit	Full Name: regucalcin (senescence marker protein-30)	IHC 1:50-1:500
Isotype: IgG	Calculated MW: 299 aa, 33 kDa	
Immunogen Catalog Number: AG12423	Observed MW: 33 kDa, 25 kDa	

Applications

Tested Applications: IHC, IP, WB, ELISA	Positive Controls:
Cited Applications: IHC, WB	WB: mouse liver tissue, mouse small intestine tissue, rat liver tissue
Species Specificity: human, mouse, rat	IP: mouse liver tissue,
Cited Species: bovine, human, mouse	IHC: rat kidney tissue, human liver tissue, human kidney tissue, human hepatocirrhosis tissue
Note-IHC: suggested antigen retrieval with TE buffer pH 9.0; (*) Alternatively, antigen retrieval may be performed with citrate buffer pH 6.0	

Background Information

Regucalcin (RGN), also known as SMP30, is a highly conserved, calcium-binding protein, that is preferentially expressed in the liver and kidney. SMP30 is preferentially localized in hepatocytes and renal proximal tubular epithelial cells. It is known to be related to aging, hepatocyte proliferation and tumorigenesis. It may be useful for HCC serologic screening, especially for the patients with AFP Negative. RGN encodes two isoforms: 33 kDa and 25 kDa.

Notable Publications

Author	Pubmed ID	Journal	Application
Le Zhang	34688152	Int Immunopharmacol	WB
Norihiro Okada	34082065	Gene	WB
Xiaolong Li	31289533	Oncol Lett	WB

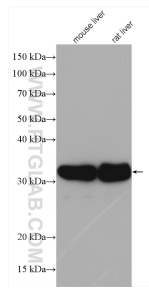
Storage

Storage:
Store at -20°C. Stable for one year after shipment.
Storage Buffer:
PBS with 0.02% sodium azide and 50% glycerol pH 7.3.
Aliquoting is unnecessary for -20°C storage

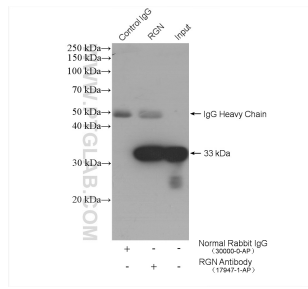
For technical support and original validation data for this product please contact:
T: 1 (888) 4PTGLAB (1-888-478-4522) (toll free in USA), or 1(312) 455-8498 (outside USA) E: proteintech@ptglab.com W: ptglab.com

This product is exclusively available under Proteintech Group brand and is not available to purchase from any other manufacturer.

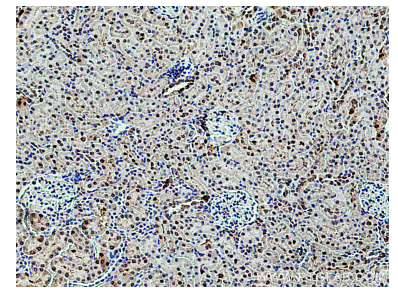
Selected Validation Data



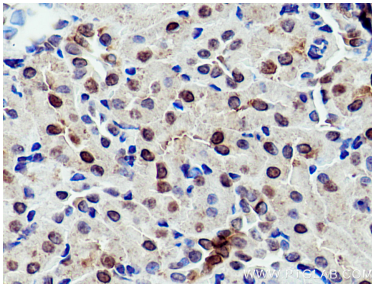
Various lysates were subjected to SDS PAGE followed by western blot with 17947-1-AP (RGN/SMP30 antibody) at dilution of 1:8000 incubated at room temperature for 1.5 hours.



IP result of anti-RGN/SMP30 (IP:17947-1-AP, 4ug; Detection:17947-1-AP 1:1000) with mouse liver tissue lysate 4000 ug.



Immunohistochemical analysis of paraffin-embedded rat kidney tissue slide using 17947-1-AP (RGN/SMP30 antibody) at dilution of 1:200 (under 10x lens). Heat mediated antigen retrieval with Tris-EDTA buffer (pH 9.0).



Immunohistochemical analysis of paraffin-embedded rat kidney tissue slide using 17947-1-AP (RGN/SMP30 antibody) at dilution of 1:200 (under 40x lens). Heat mediated antigen retrieval with Tris-EDTA buffer (pH 9.0).