

For Research Use Only

# GLRA1 Polyclonal antibody

Catalog Number: 17951-1-AP

4 Publications



## Basic Information

**Catalog Number:**

17951-1-AP

**Size:**

150ul, Concentration: 750 µg/ml by Nanodrop and 333 µg/ml by Bradford method using BSA as the standard;

**Source:**

Rabbit

**Isotype:**

IgG

**Immunogen Catalog Number:**

AG12431

**GenBank Accession Number:**

BC074980

**GeneID (NCBI):**

2741

**Full Name:**

glycine receptor, alpha 1

**Calculated MW:**

449 aa, 52 kDa

**Observed MW:**

48 kDa

**Purification Method:**

Antigen affinity purification

**Recommended Dilutions:**

WB 1:500-1:3000

## Applications

**Tested Applications:**

FC, WB, ELISA

**Cited Applications:**

CoIP, WB

**Species Specificity:**

human, mouse, rat

**Cited Species:**

human, mouse

**Positive Controls:**

WB: mouse brain tissue, mouse cerebellum tissue, SH-SY5Y cells

## Background Information

Glycine is an inhibitory neurotransmitter in the central nervous system. The glycine receptor (GlyR) is a member of the nicotinic acetylcholine receptor of ligand-gated ion channels. This receptor has important roles in a variety of physiological processes, especially in mediating inhibitory neurotransmission in the spinal cord and brain stem. GlyR is a pentameric receptor comprised of alpha and beta subunits. Four alpha-subunits (GLRA1, GLRA2, GLRA3, GLRA4) and one beta-subunit (GLRB) of GlyR have been identified. (PMID: 11409700; 15383648)

## Notable Publications

Author	Pubmed ID	Journal	Application
Lin Yao	33727056	Eur J Pharmacol	WB
Niannian Huang	31321459	Psychopharmacology (Berl)	WB
Zi-Yang Zhang	30721695	Neuropharmacology	WB

## Storage

**Storage:**

Store at -20°C. Stable for one year after shipment.

**Storage Buffer:**

PBS with 0.02% sodium azide and 50% glycerol pH 7.3.

Aliquoting is unnecessary for -20°C storage

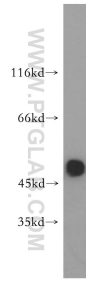
For technical support and original validation data for this product please contact:

T: 1 (888) 4PTGLAB (1-888-478-4522) (toll free in USA), or 1(312) 455-8498 (outside USA)

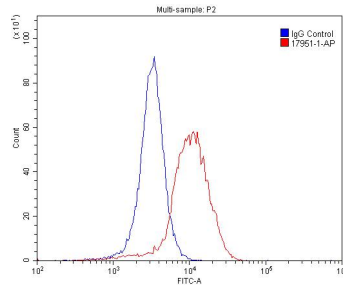
E: [proteintech@ptglab.com](mailto:proteintech@ptglab.com)  
W: [ptglab.com](http://ptglab.com)

This product is exclusively available under Proteintech Group brand and is not available to purchase from any other manufacturer.

## Selected Validation Data



mouse brain tissue were subjected to SDS PAGE followed by western blot with 17951-1-AP (GLRA1 antibody) at dilution of 1:500 incubated at room temperature for 1.5 hours.



1X10<sup>6</sup> SH-SY5Y cells were stained with 0.2ug GLRA1 antibody (17951-1-AP, red) and control antibody (blue). Fixed with 4% PFA blocked with 3% BSA (30 min). Alexa Fluor 488-conjugated AffiniPure Goat Anti-Rabbit IgG(H+L) with dilution 1:1500.