

For Research Use Only

# GIP Polyclonal antibody

Catalog Number: 18034-1-AP



## Basic Information

Catalog Number:

18034-1-AP

Size:

150ul , Concentration: 600 µg/ml by Nanodrop and 400 µg/ml by Bradford method using BSA as the standard;

Source:

Rabbit

Isotype:

IgG

Immunogen Catalog Number:

AG12634

GenBank Accession Number:

BC069663

GeneID (NCBI):

2695

Full Name:

gastric inhibitory polypeptide

Calculated MW:

153 aa, 17 kDa

Purification Method:

Antigen affinity purification

Recommended Dilutions:

IHC 1:50-1:500

## Applications

Tested Applications:

IHC, ELISA

Species Specificity:

human

**Note-IHC: suggested antigen retrieval with TE buffer pH 9.0; (\*) Alternatively, antigen retrieval may be performed with citrate buffer pH 6.0**

Positive Controls:

IHC : human pancreas tissue, human small intestine tissue

## Background Information

### Storage

Storage:

Store at -20°C. Stable for one year after shipment.

Storage Buffer:

PBS with 0.02% sodium azide and 50% glycerol pH 7.3.

Aliquoting is unnecessary for -20°C storage

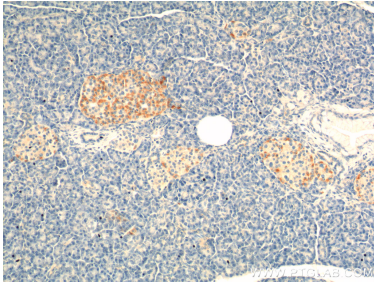
For technical support and original validation data for this product please contact:

T: 1 (888) 4PTGLAB (1-888-478-4522) (toll free in USA), or 1(312) 455-8498 (outside USA)

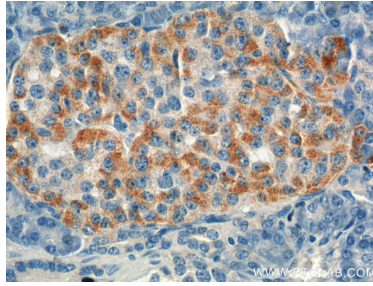
E: [proteintech@ptglab.com](mailto:proteintech@ptglab.com)  
W: [ptglab.com](http://ptglab.com)

This product is exclusively available under Proteintech Group brand and is not available to purchase from any other manufacturer.

## Selected Validation Data



Immunohistochemical analysis of paraffin-embedded human pancreas tissue slide using 18034-1-AP (GIP Antibody) at dilution of 1:200 (under 10x lens).



Immunohistochemical analysis of paraffin-embedded human pancreas tissue slide using 18034-1-AP (GIP Antibody) at dilution of 1:200 (under 40x lens).